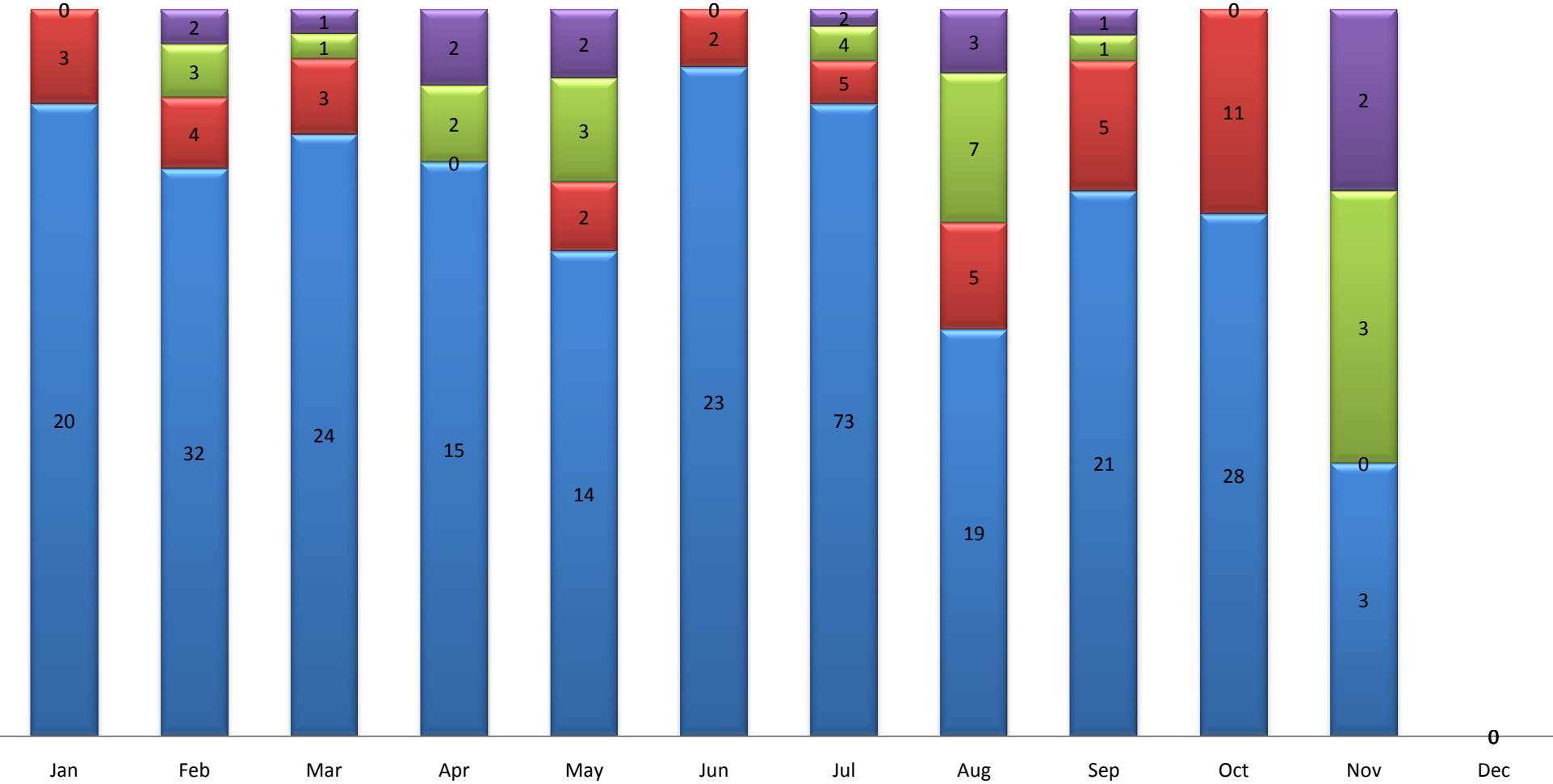


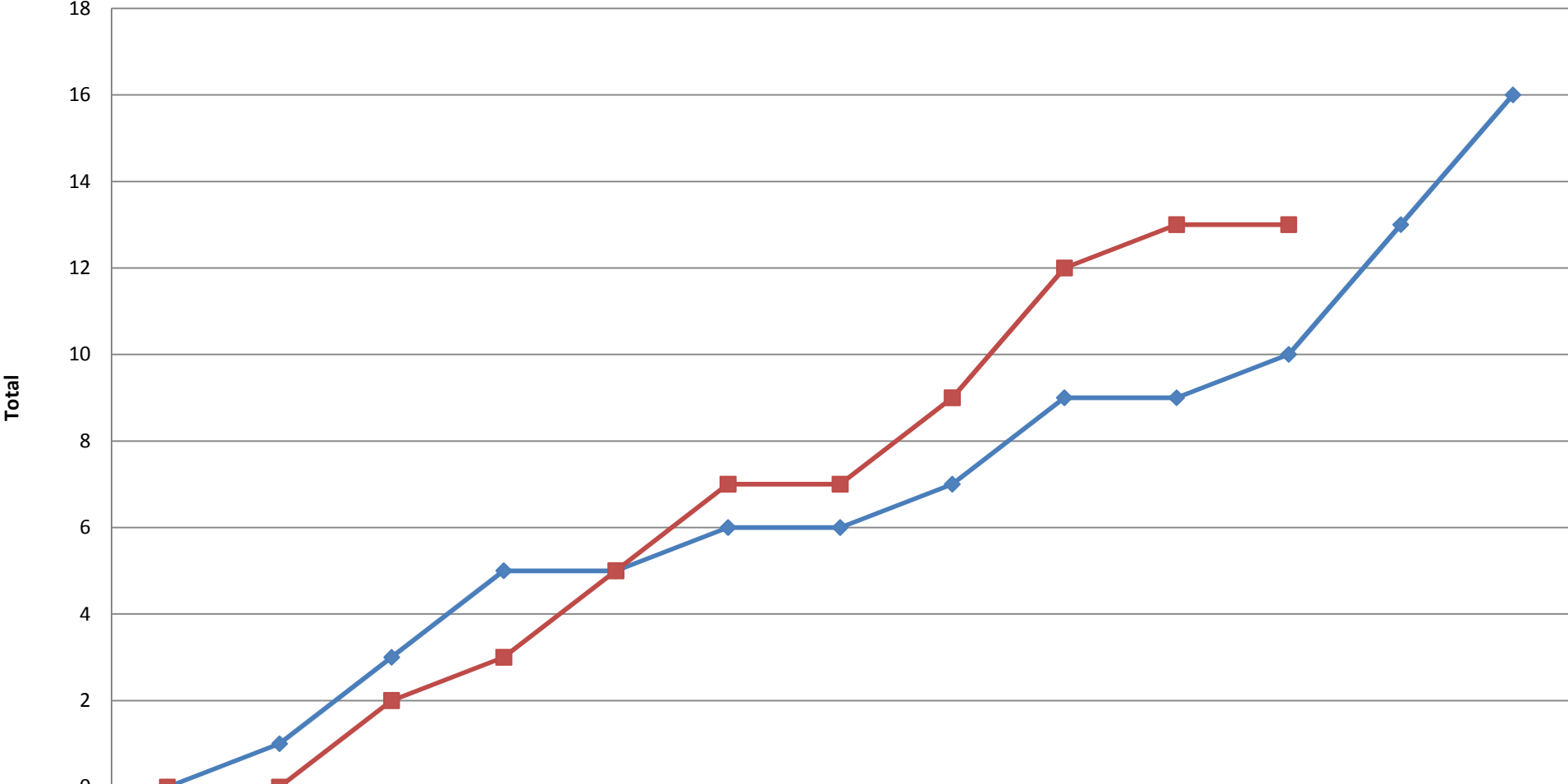
# POB, Injuries and Fataliteis

■ Persons on board 
 ■ Serious Injuries 
 ■ Fatalities 
 ■ Fatal Accidents



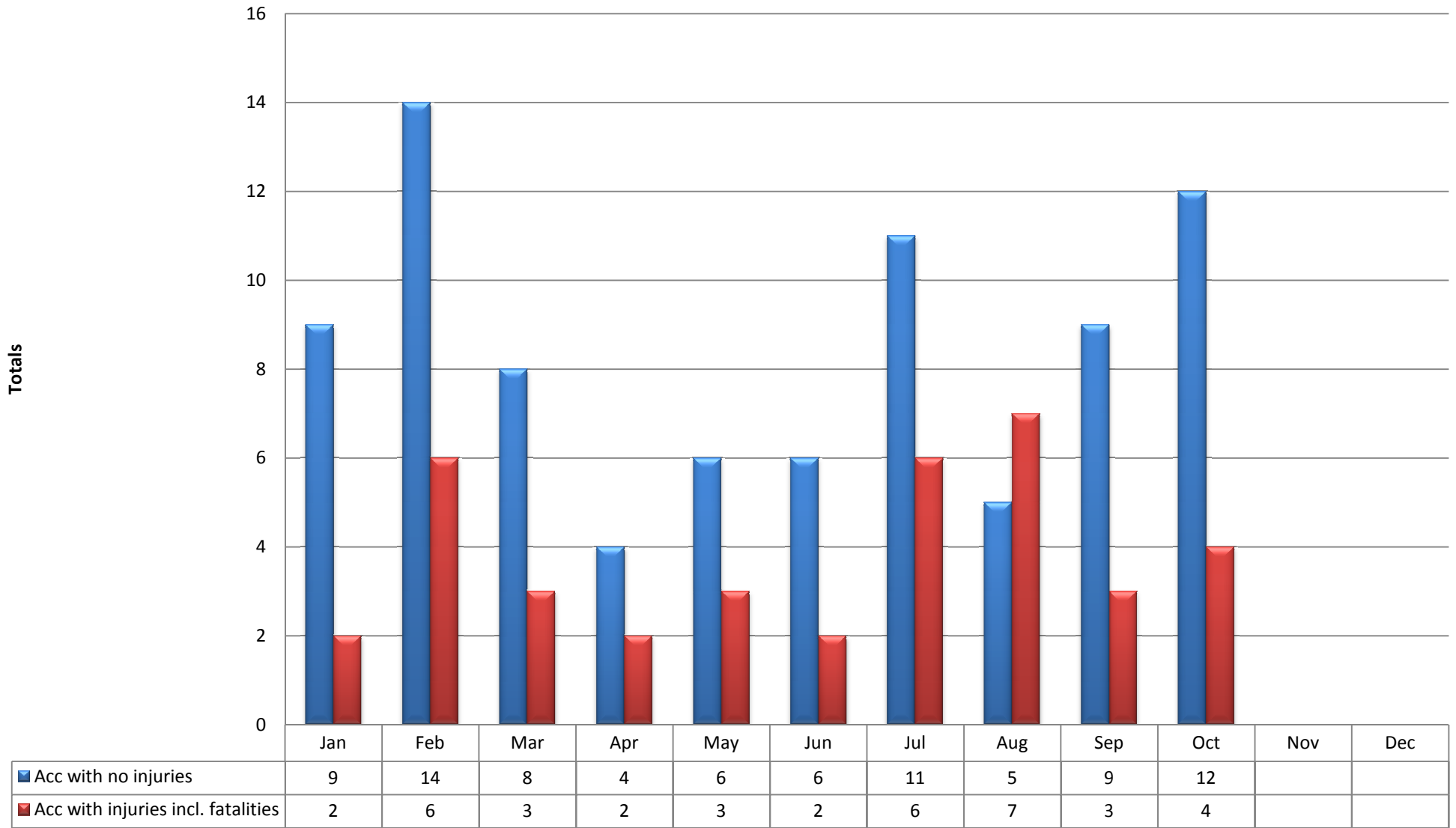


### Fatal Accidents (Accumulative)

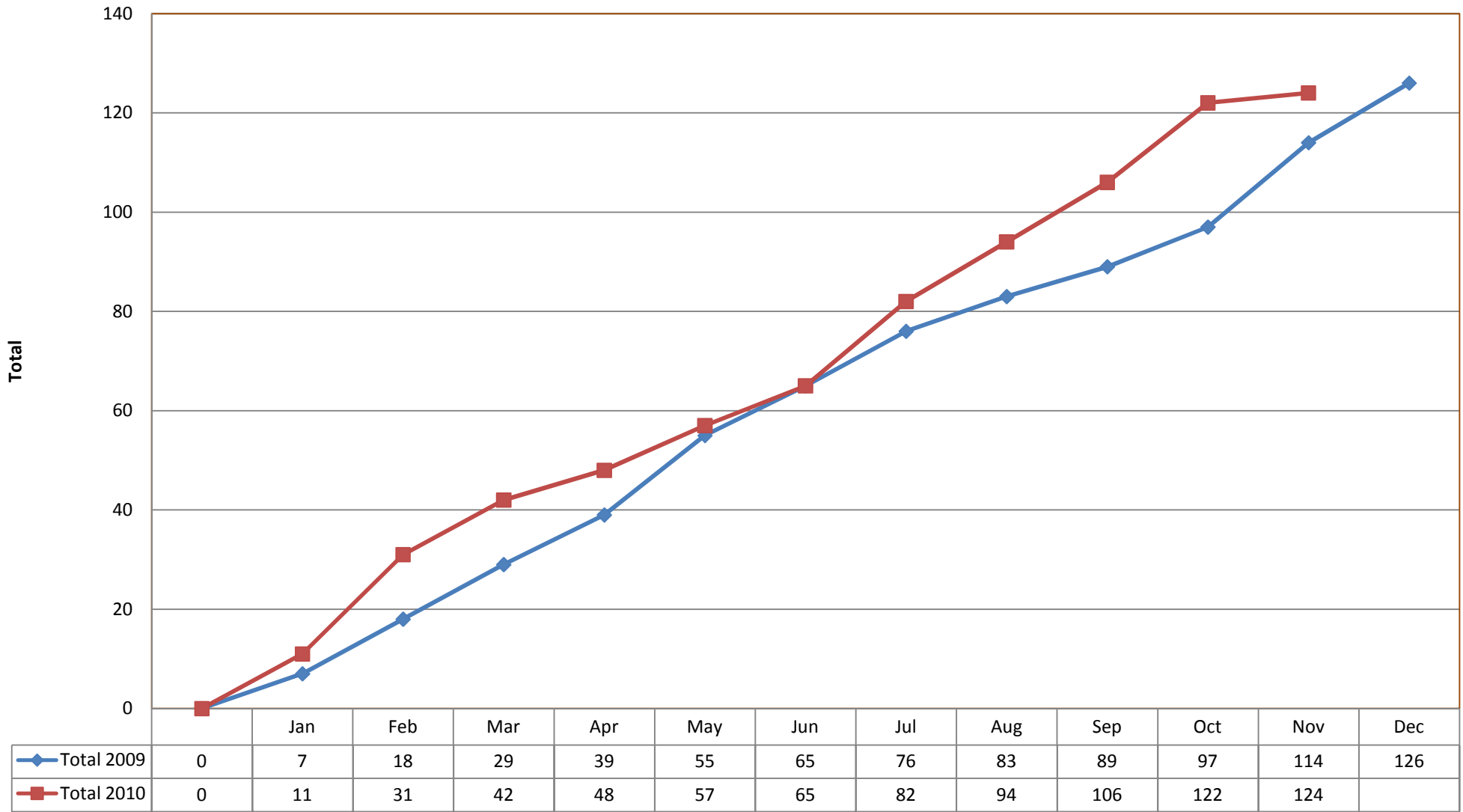


◆ 2009	0	1	3	5	5	6	6	7	9	9	10	13	16
■ 2010	0	0	2	3	5	7	7	9	12	13	13		

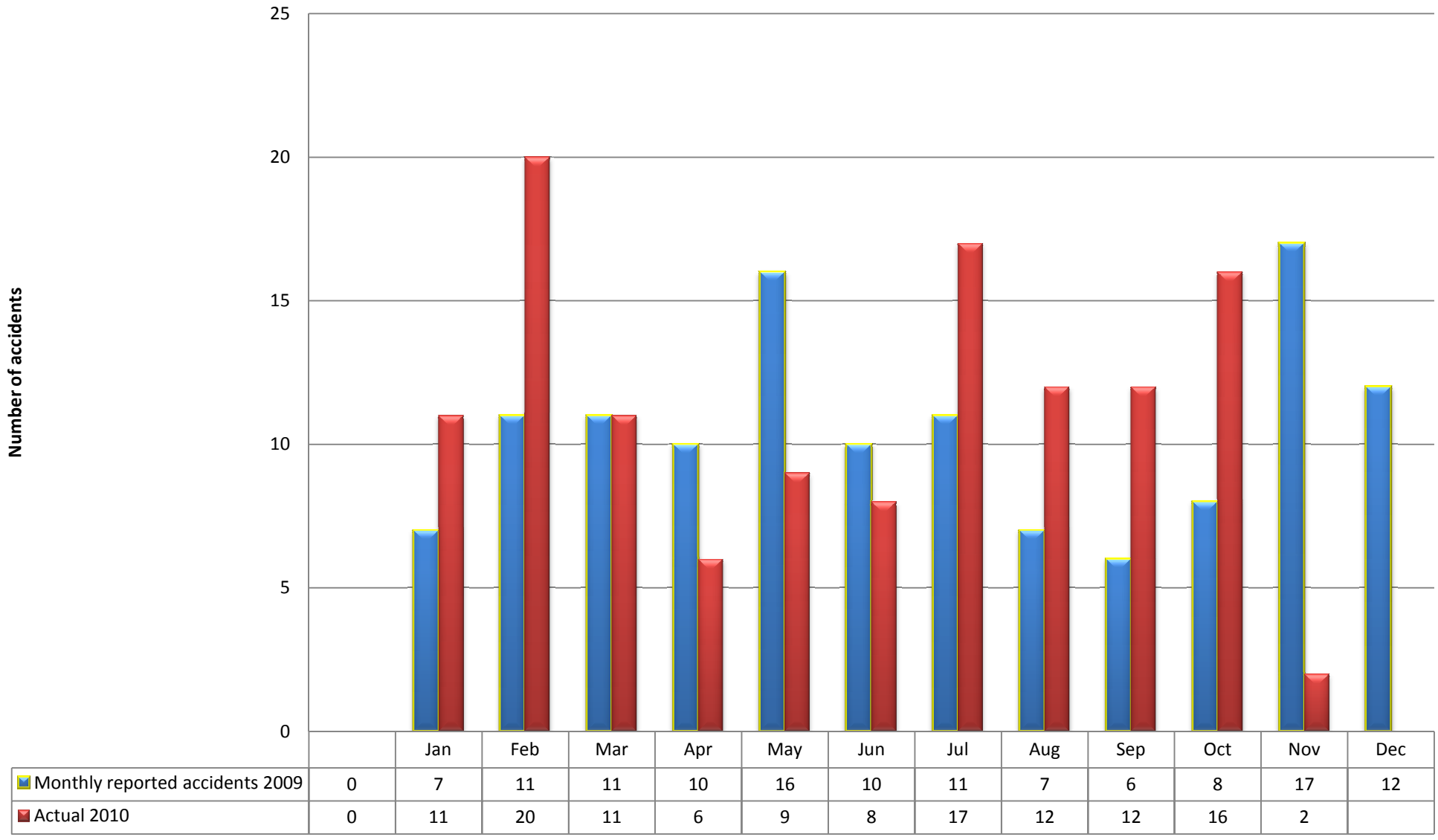
## Accidents (Injuries and no injuries)



### Monthly accident rate (accumulative)



## Monthly Rate of Accidents



## Fatalities (Accumulative)

