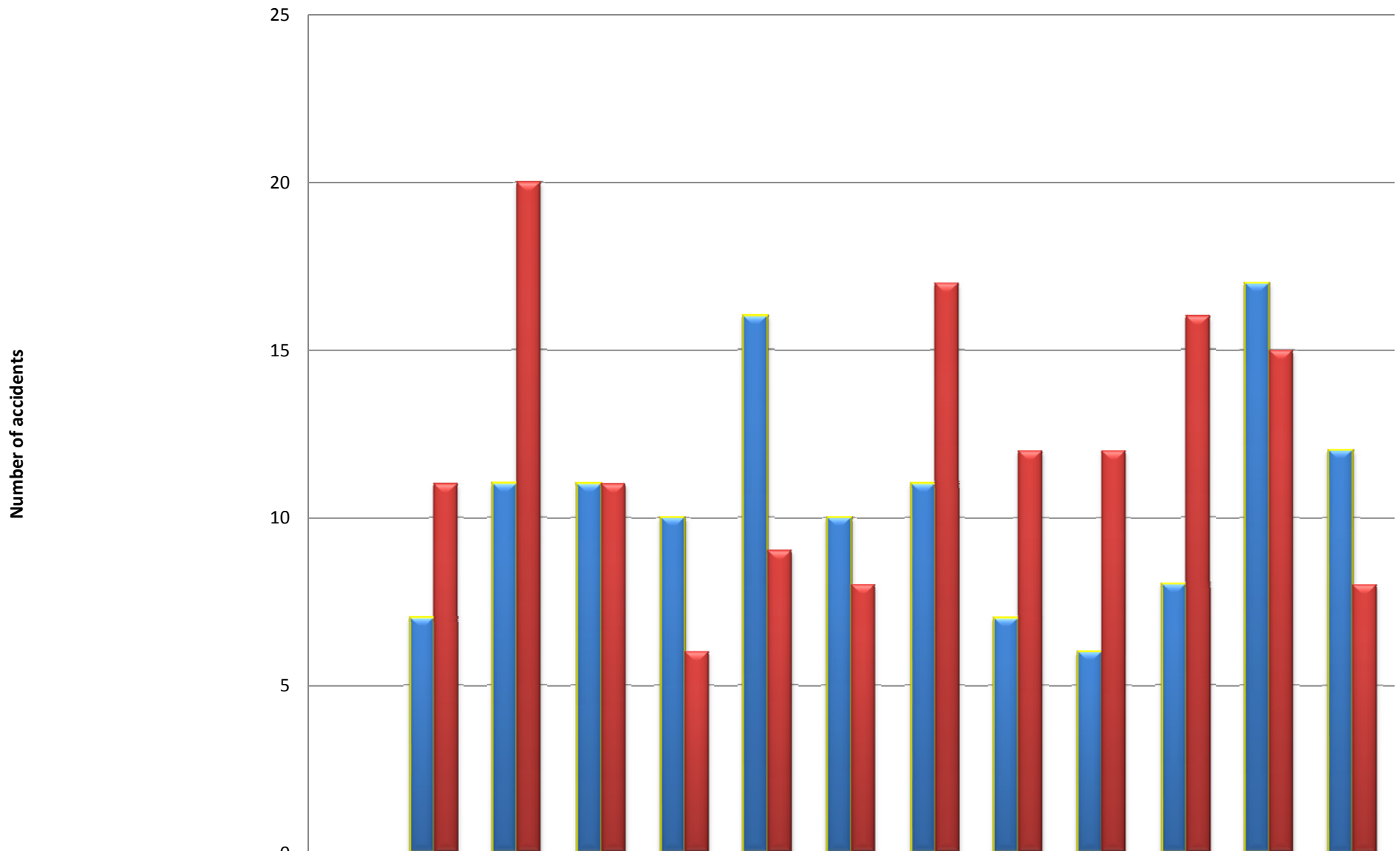


## Monthly Rate of Accidents

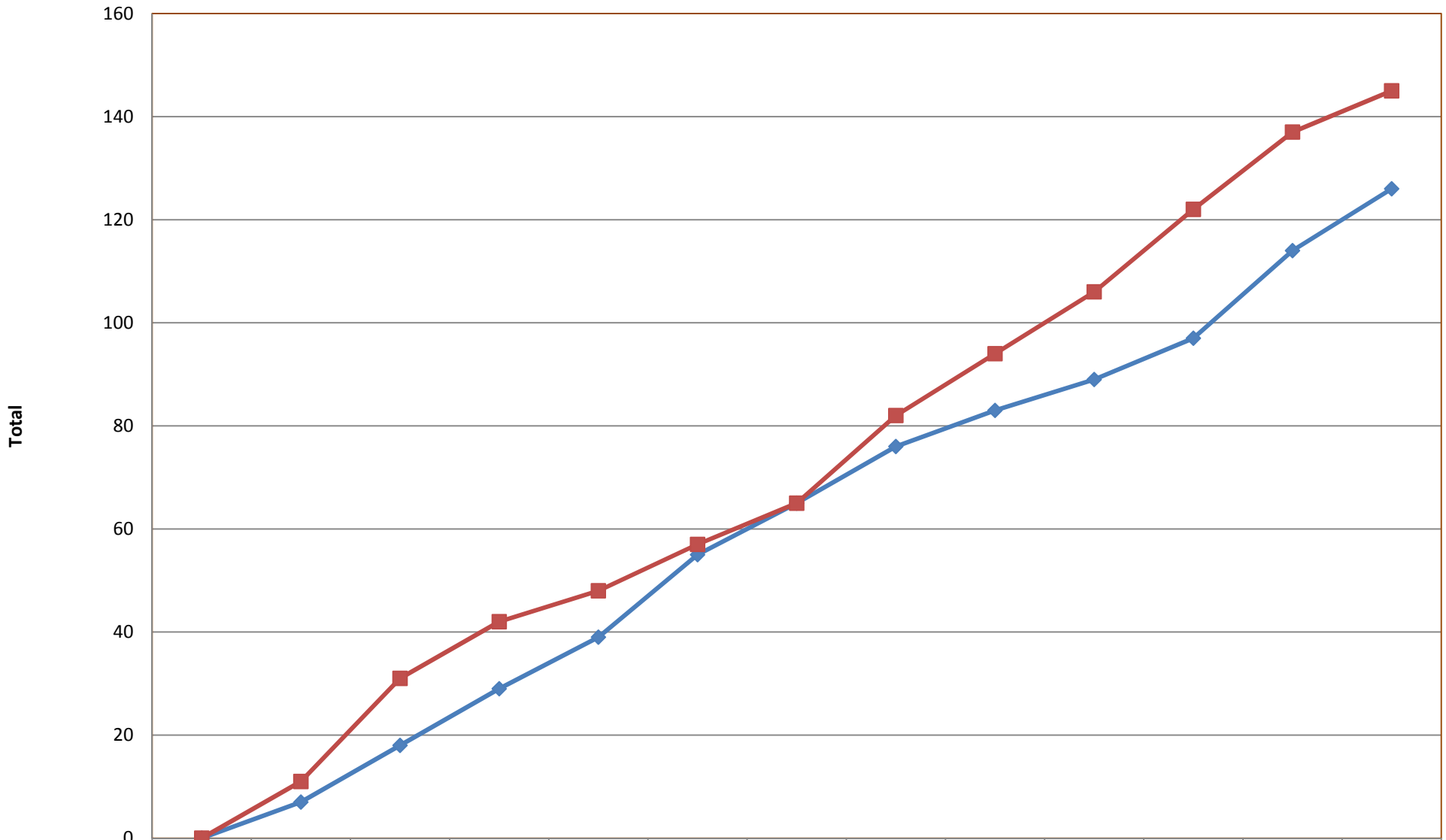


Monthly reported accidents 2009

Actual 2010

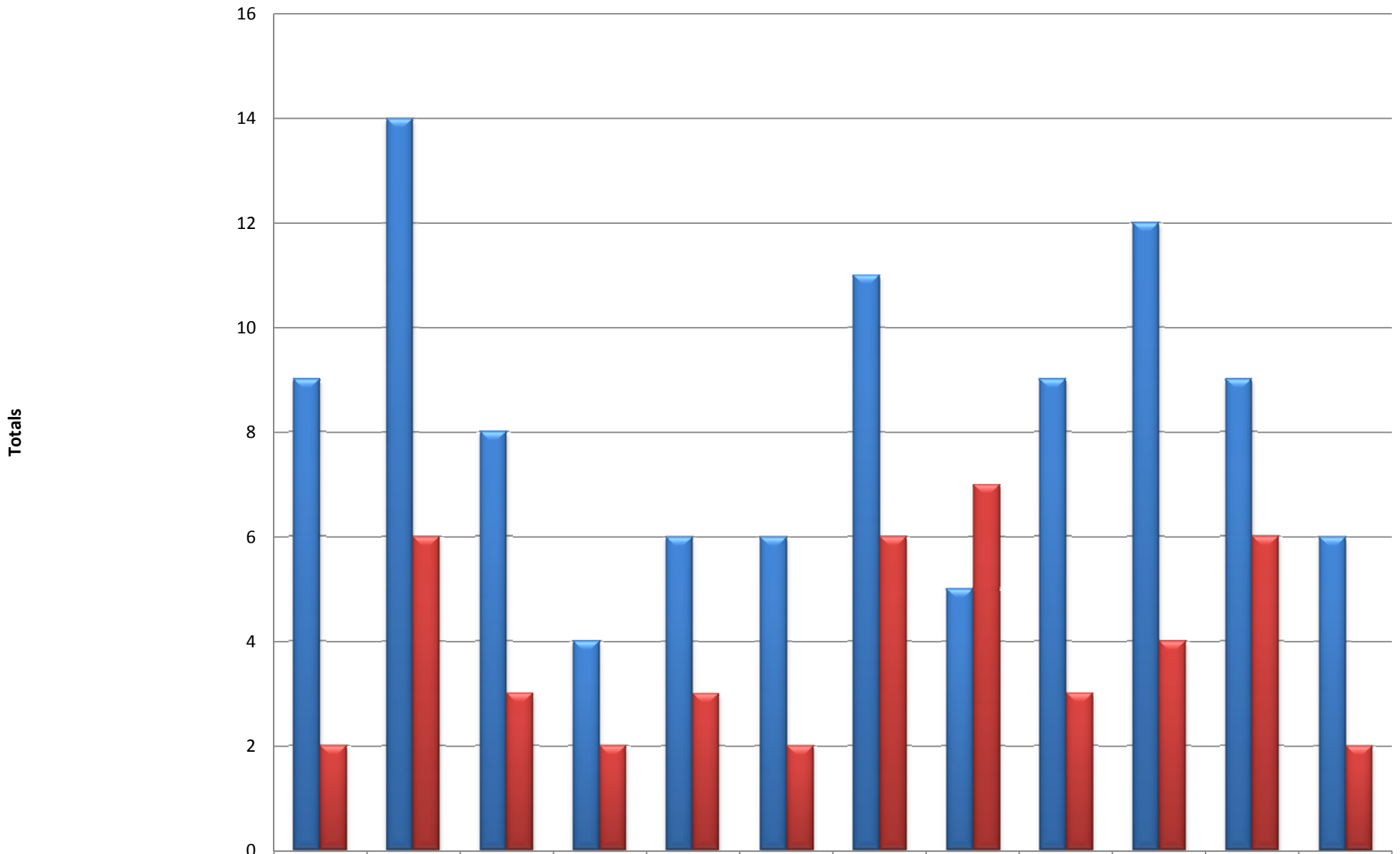
	Jan	Feb	Mar	Apr	May	Jun	Jul	Aug	Sep	Oct	Nov	Dec
Monthly reported accidents 2009	7	11	11	10	16	10	11	7	6	8	17	12
Actual 2010	11	20	11	6	9	8	17	12	12	16	15	8

### Monthly accident rate (accumulative)



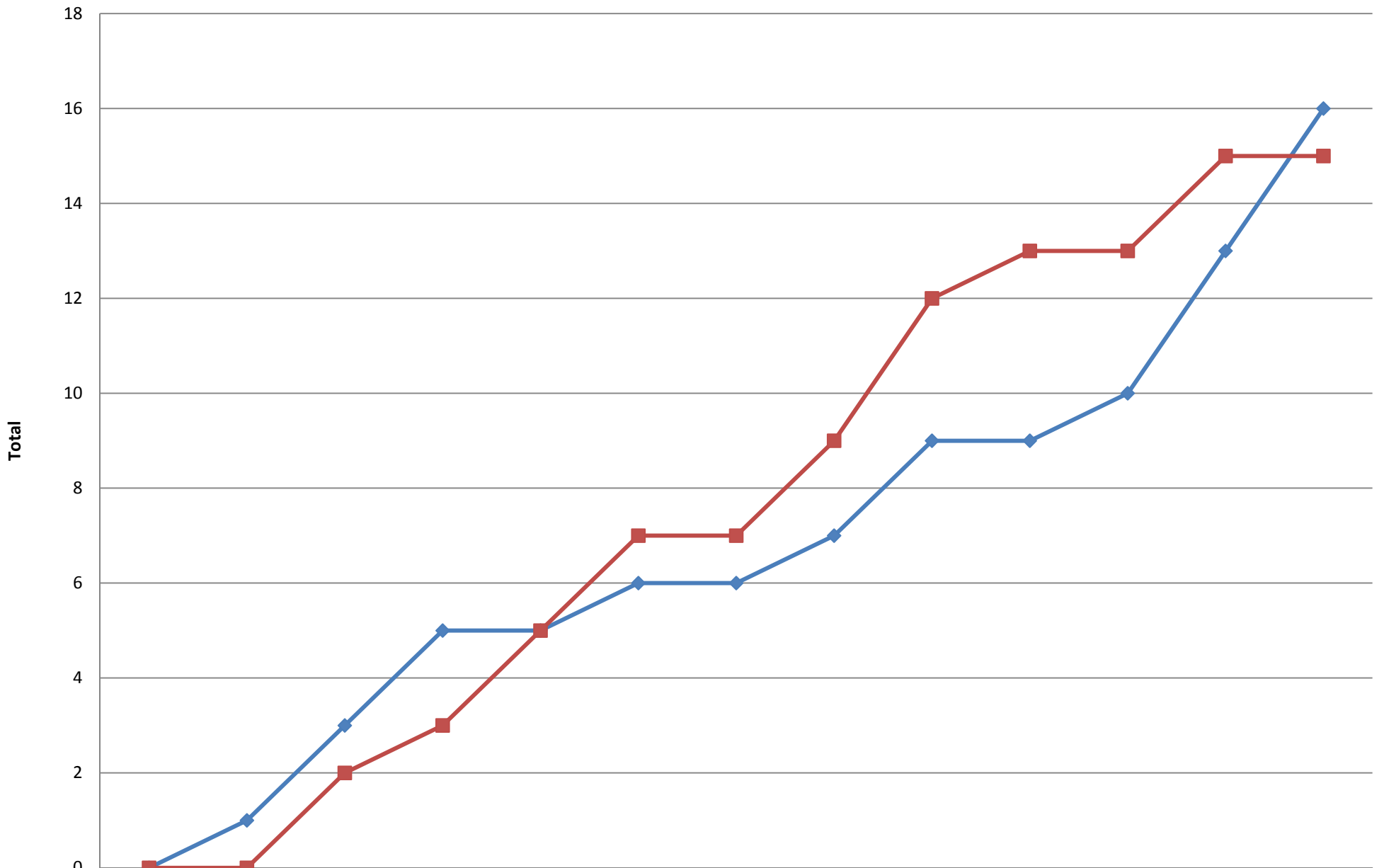
	Jan	Feb	Mar	Apr	May	Jun	Jul	Aug	Sep	Oct	Nov	Dec
Total 2009	7	18	29	39	55	65	76	83	89	97	114	126
Total 2010	11	31	42	48	57	65	82	94	106	122	137	145

## Accidents (Injuries and no injuries)



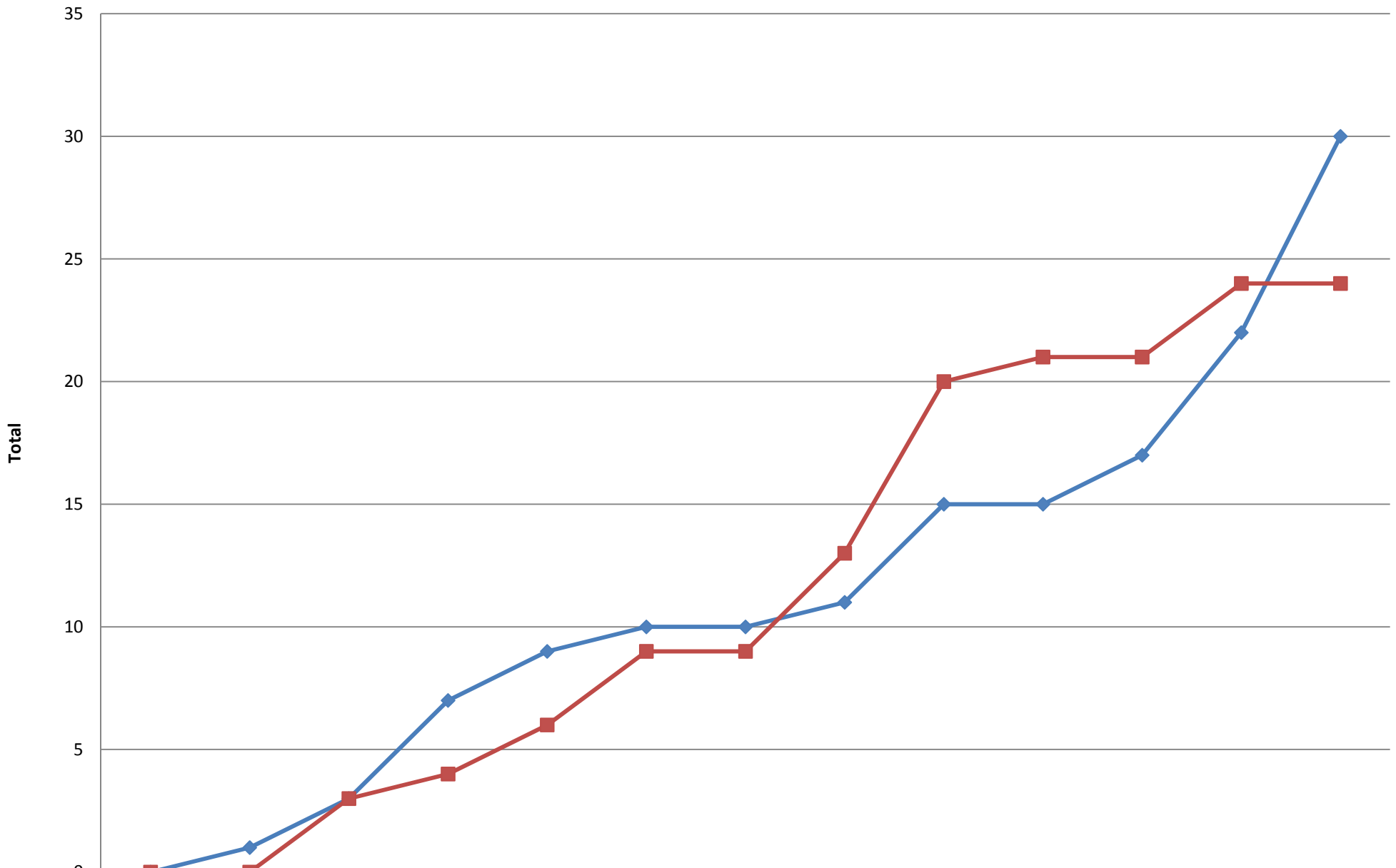
■ Acc with no injuries	9	14	8	4	6	6	11	5	9	12	9	6
■ Acc with injuries incl. fatalities	2	6	3	2	3	2	6	7	3	4	6	2

## Fatal Accidents (Accumulative)



	Jan	Feb	Mar	Apr	May	Jun	Jul	Aug	Sep	Oct	Nov	Dec
2009	1	3	5	5	6	6	7	9	9	10	13	16
2010	0	2	3	5	7	7	9	12	13	13	15	15

# Fatalities (Accumulative)



	Jan	Feb	Mar	Apr	May	Jun	Jul	Aug	Sep	Oct	Nov	Dec
2009	1	3	7	9	10	10	11	15	15	17	22	30
2010	0	3	4	6	9	9	13	20	21	21	24	24

# POB, Injuries and Fataliteis

■ Persons on board 
 ■ Serious Injuries 
 ■ Fatalities 
 ■ Fatal Accidents

