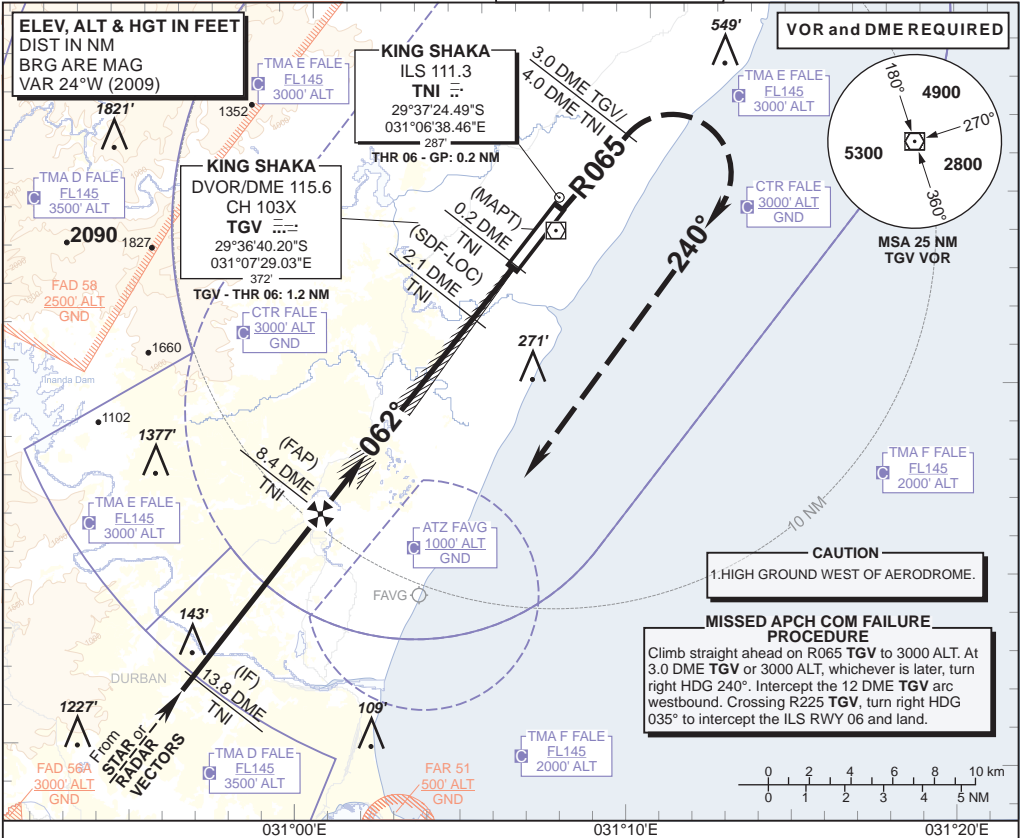


**INSTRUMENT
APPROACH
CHART**

AERODROME ELEV 304'
HEIGHTS RELATED TO
THR RWY 06 - ELEV 287'

RADAR APP 125.75
TWR 118.45
GND 121.65
ATIS 127.00

DURBAN
(KING SHAKA INTERNATIONAL)
ILS Z RWY 06
CAT A - D



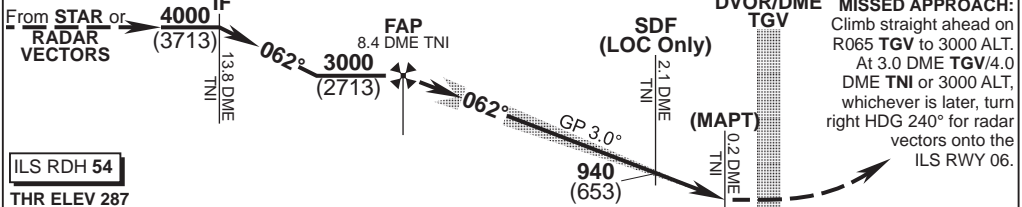
CAUTION
1. HIGH GROUND WEST OF AERODROME.

MISSED APCH COM FAILURE PROCEDURE
Climb straight ahead on R065 TGV to 3000 ALT. At 3.0 DME TGV or 3000 ALT, whichever is later, turn right HDG 240°. Intercept the 12 DME TGV arc westbound. Crossing R225 TGV, turn right HDG 035° to intercept the ILS RWY 06 and land.

TGV DME	8	7	6	5	4	3	2
ADVISORY ALT (HGT)	2520 (2233)	2200 (1913)	1880 (1593)	1560 (1273)	1240 (953)	920 (633)	600 (313)

TRANSITION ALT 5500
TRANSITION LEVEL ATC

INA ALD: via STAR or RADAR VECTORS



ILS RDH 54
THR ELEV 287
NM to/from THR RWY 06

	OCA (H)	A	B	C	D/DL	GS	KT				
							80	100	120	140	160
Straight-in Approach	With 3.4% Missed APCH Gradient CAT I	495 (208)	505 (218)	515 (228)	525 (238)	FAP to THR	M:S 6:13	4:58	4:09	3:33	3:06
	With 3.5% Missed APCH Gradient GP INOP	660 (373)	660 (373)	660 (373)	660 (373)	Rate of descent	FPM 428	535	642	749	856
Circling	With 2.5% CAT 1 Missed APCH Gradient GP INOP	1129 (842)	1129 (842)	1129 (842)	1129 (842)	NOTE: 1. PROCEDURE ONLY APPLICABLE VIA STAR or RADAR VECTORS. 2. In the event of Radio Communication Failure complete the turn on to the ILS and complete the ILS/LOC RWY 06 approach and land RWY 06.					
	With 3.5% Missed APCH Gradient GP INOP	1300(1013)	1300(1013)	1300(1013)	1300(1013)						

CHANGE: New Chart