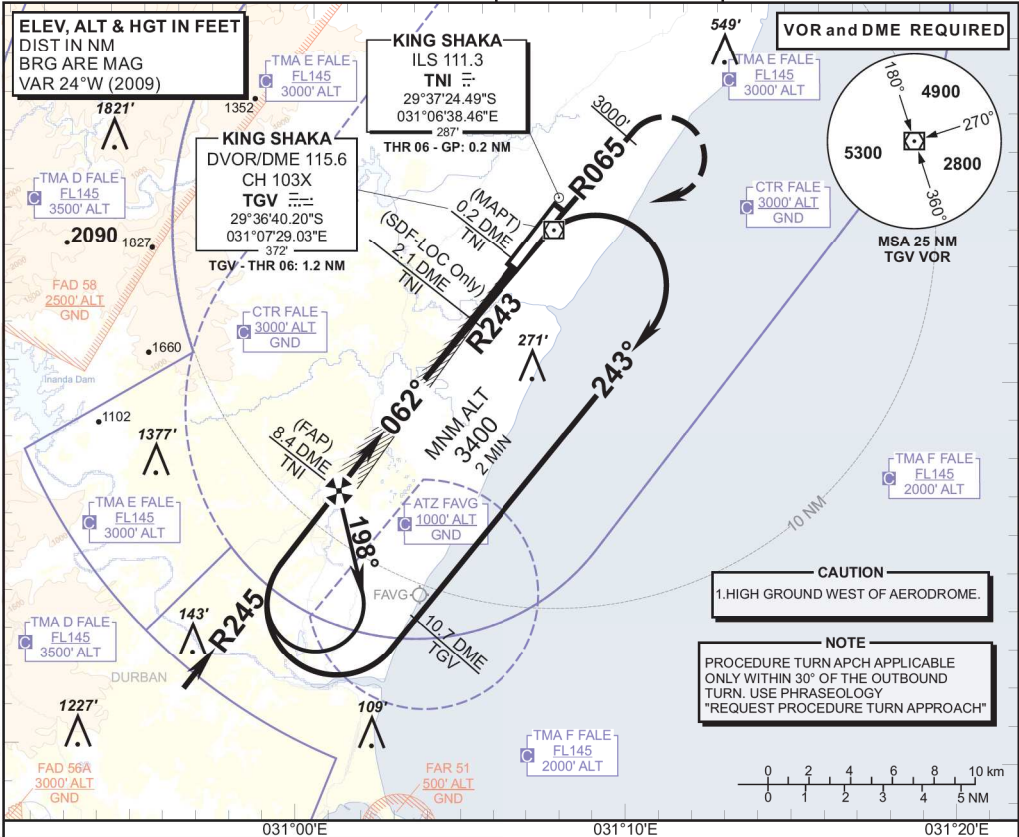


**INSTRUMENT
APPROACH
CHART**

AERODROME ELEV 304'
HEIGHTS RELATED TO
THR RWY 06 - ELEV 287'

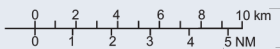
RADAR APP 125.75
TWR 118.45
GND 121.65
ATIS 127.00

DURBAN
(KING SHAKA INTERNATIONAL)
ILS Y RWY 06
CAT A - D

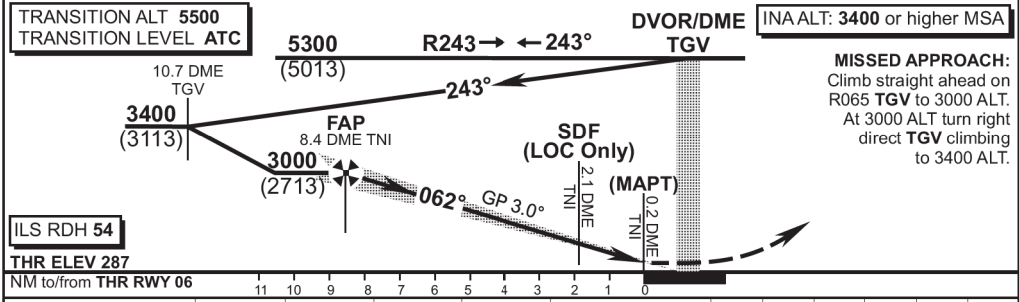


CAUTION
1. HIGH GROUND WEST OF AERODROME.

NOTE
PROCEDURE TURN APCH APPLICABLE ONLY WITHIN 30° OF THE OUTBOUND TURN. USE PHRASEOLOGY "REQUEST PROCEDURE TURN APPROACH"



TGV DME	8	7	6	5	4	3	2
ADVISORY ALT (HGT)	2520 (2233)	2200 (1913)	1880 (1593)	1560 (1273)	1240 (953)	920 (633)	600 (313)



ILS RDH 54							DVOR/DME TGV	INA ALT: 3400 or higher MSA												
THR ELEV 287								MISSED APPROACH: Climb straight ahead on R065 TGV to 3000 ALT. At 3000 ALT turn right direct TGV climbing to 3400 ALT.												
NM to/from THR RWY 06		11	10	9	8	7	6	5	4	3	2	1	0							
Straight-in Approach	With 3.4% Missed APCH Gradient	CAT I	495 (208)	505 (218)	515 (228)	525 (238)	GS	KT	80	100	120	140	160	FAP to THR	M:S	6:13	4:58	4:09	3:33	3:06
	With 3.5% Missed APCH Gradient	GP INOP	660 (373)	660 (373)	660 (373)	660 (373)	Rate of descent	FPM	428	535	642	749	856	NOTE: 1. Circle to land at the discretion of the pilot in command. 2. 80°/260° Procedure turn prohibited. 3. Descend in the hold to 3400 ALT.						
	With 2.5% Missed APCH Gradient	CAT 1	1129 (842)	1129 (842)	1129 (842)	1129 (842)														
Circling		960 (673)	990 (703)	1170 (883)	1440 (1153)															

CHANGE: New Chart

EFF: 01 MAY 10