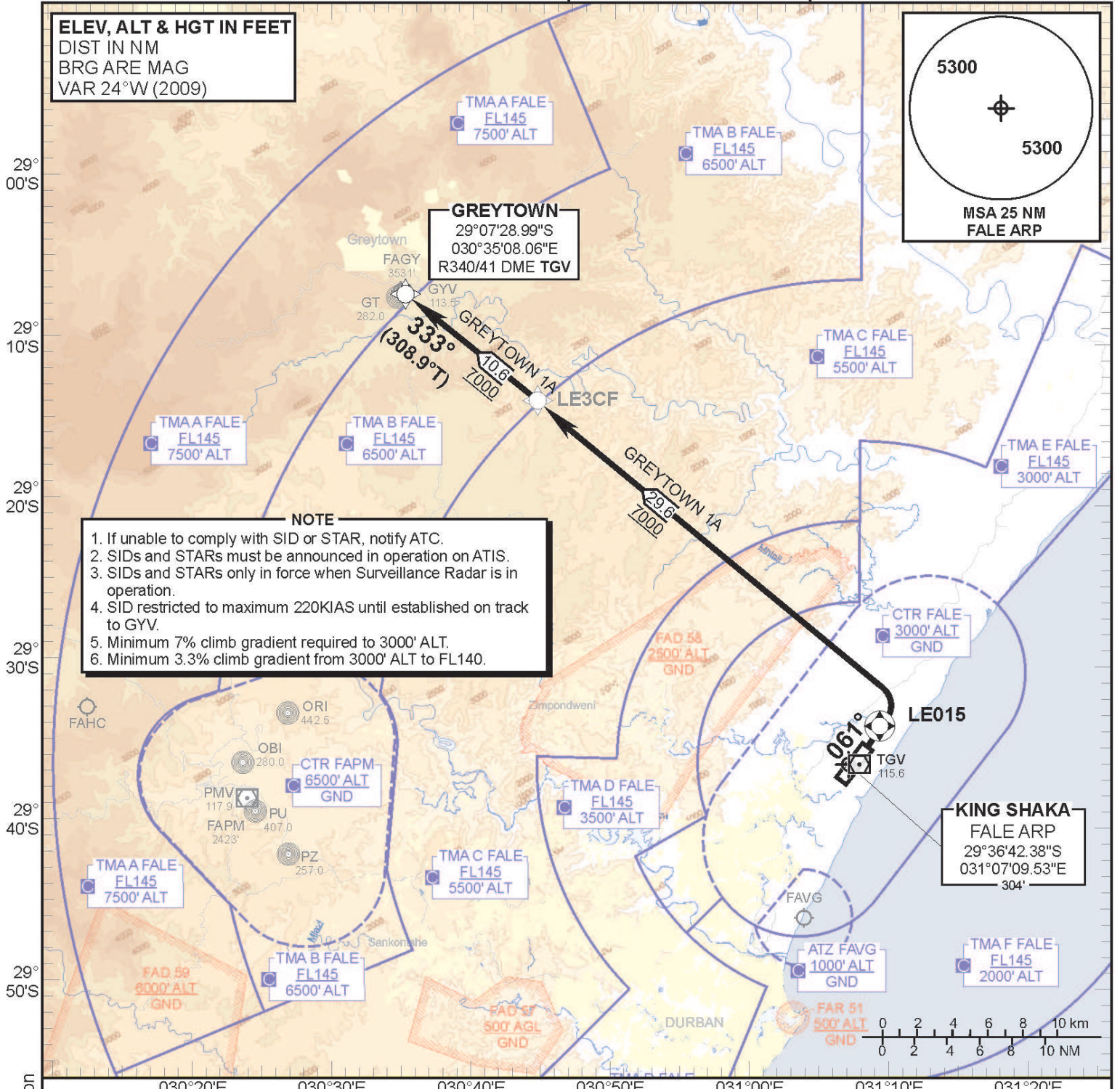
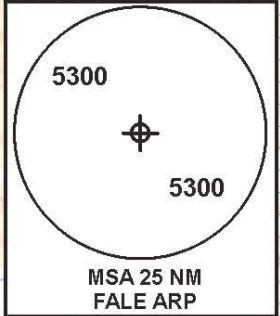


**ELEV, ALT & HGT IN FEET**  
DIST IN NM  
BRG ARE MAG  
VAR 24°W (2009)



**CHANGE:** Procedure Track/TMA F Depiction

**GREYTOWN 1A  
RWY 06**

**Climb to FL070. Maintain RWY track to LE015. At LE015 turn left direct to LE3CF. At LE3CF proceed to GYV. Further climb will be under radar control. At GYV set course as per flight plan.**

**Restricted to a minimum climb gradient of 7% to 3000' ALT.**  
7% @ 140KT IAS = 992 FPM  
7% @ 180KT IAS = 1276 FPM  
7% @ 220KT IAS = 1560 FPM

**COMMUNICATION FAILURE PROCEDURE (Squawk 7600)**

Maintain RWY track to LE015. At LE015 turn left direct to LE3CF maintaining last assigned flight level or MSA, whichever is higher. Passing LE3CF climb to flight plan level and proceed to GYV. At GYV set course as per flight plan.

Aircraft wishing to return must continue to the SID termination point and climb to the last assigned level MSA or FL080 whichever is higher. At GYV proceed to GETOK and comply with the GETOK 1C STAR Communication Failure Procedure.