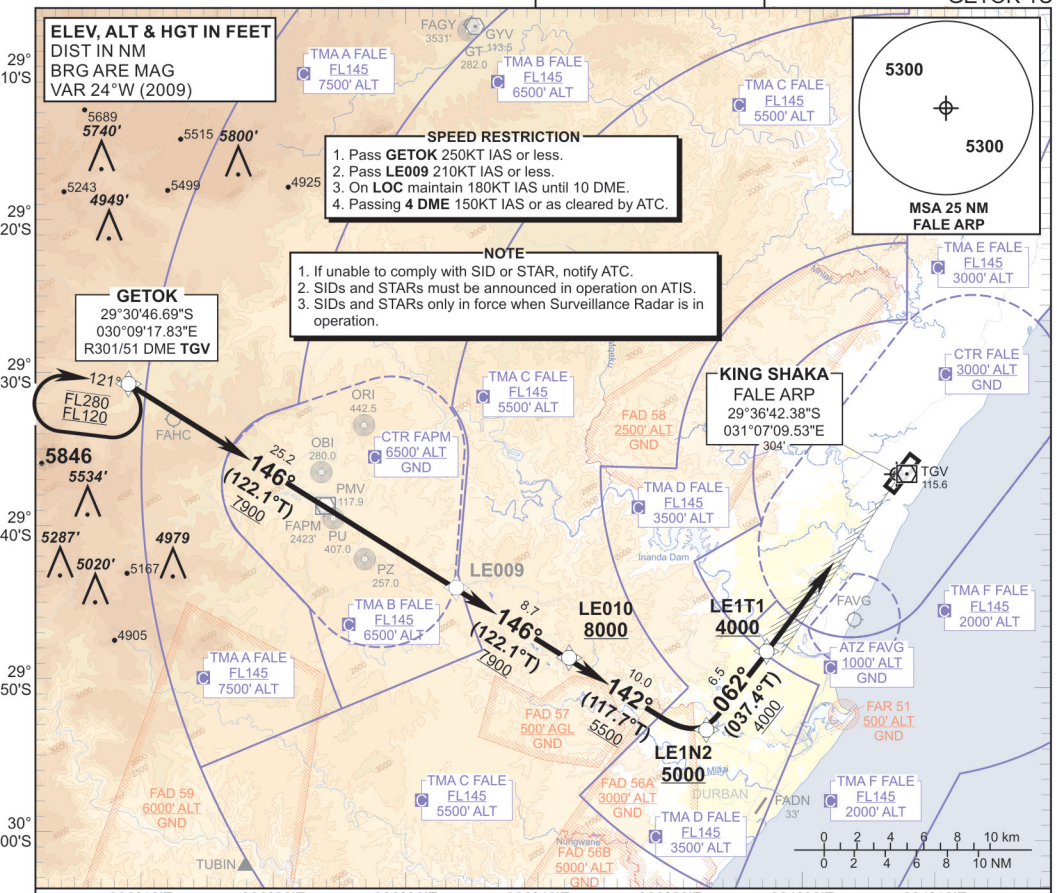


**STANDARD ARRIVAL
CHART -
INSTRUMENT
(STAR)**

TRANSITIONAL ALTITUDE
5500'
TRANSITIONAL LEVEL
ATC

RADAR APP 125.75
TWR 118.45
GND 121.65
ATIS 127.00

DURBAN
(KING SHAKA INTERNATIONAL)
RNAV (GNSS) RWY 06
GETOK 1C



SPEED RESTRICTION

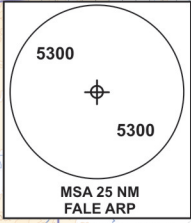
1. Pass **GETOK** 250KT IAS or less.
2. Pass **LE009** 210KT IAS or less.
3. On **LOC** maintain 180KT IAS until 10 DME.
4. Passing **4 DME** 150KT IAS or as cleared by ATC.

NOTE

1. If unable to comply with SID or STAR, notify ATC.
2. SIDs and STARs must be announced in operation on ATIS.
3. SIDs and STARs only in force when Surveillance Radar is in operation.

GETOK
29°30'46.69"S
030°09'17.83"E
R301/51 DME TGV

**KING SHAKA
FALE ARP**
29°36'42.38"S
031°07'09.53"E



**GETOK 1C :
RWY 06**

Leave GETOK for LE010. At LE010 proceed to LE1122. At LE1122 turn left to LE1121 and intercept the ILS LOC RWY 06.

COMMUNICATION FAILURE PROCEDURE (Squawk 7600)

Before GETOK: Proceed to GETOK and enter the GETOK RNAV (GNSS) hold. Hold at last assigned level, for minimum 5 MIN, then descend to FL120 in the hold or maintain last assigned level if below FL120. Leave GETOK on the "After GETOK" Communication Failure Procedure.

After GETOK: Continue on the GETOK 1C RNAV (GNSS) STAR, maintaining FL120. At LE010 (not below 8000' ALT) continue to LE1122. At LE1122 (not below 5000' ALT) turn left to LE1121 (not below 4000' ALT) and continue with the RNAV (GNSS) RWY 06 APCH and intercept the ILS LOC RWY 06 and land RWY 06.

In the event of a missed approach with the intention of diverting to an alternate aerodrome, proceed as follows:
Comply with the ITMIL 1C RNAV (GNSS) SID. At ITMIL continue to the diversion aerodrome.

CHANGE: GETOK 1A to GETOK 1C