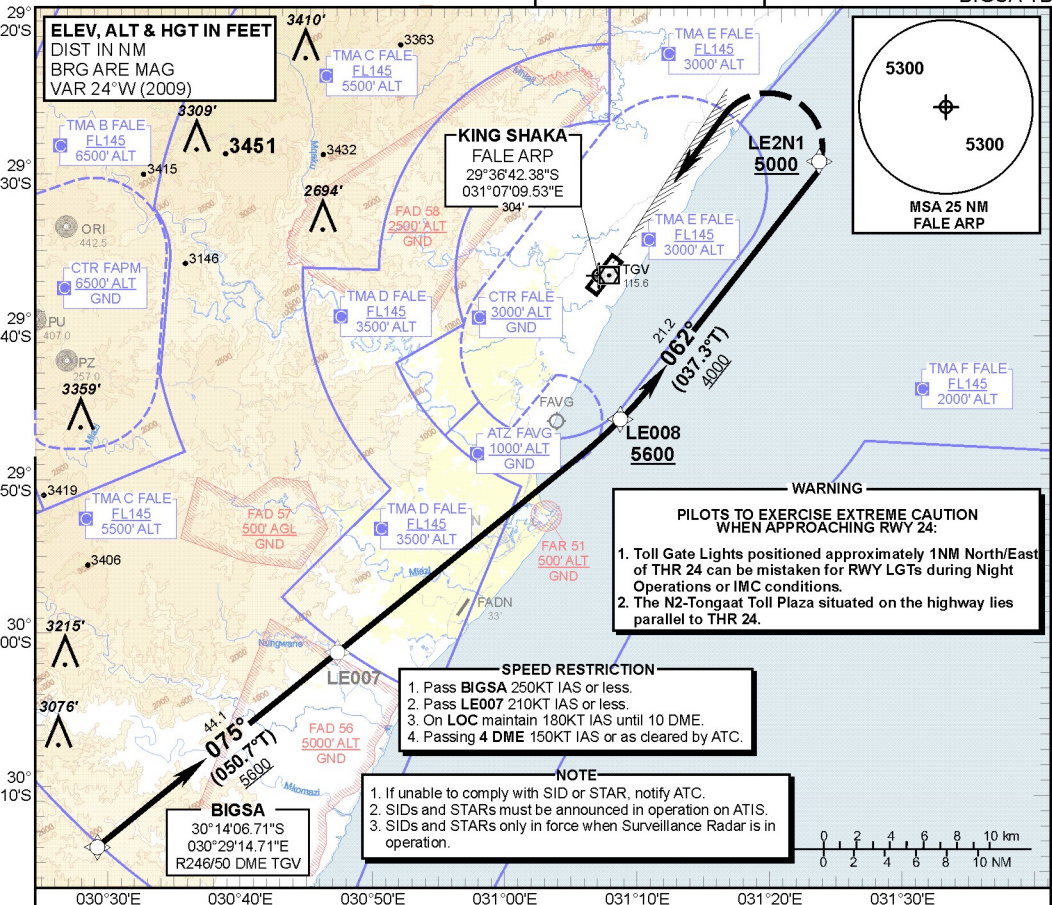


**STANDARD ARRIVAL
CHART -
INSTRUMENT
(STAR)**

TRANSITIONAL ALTITUDE
5500'
TRANSITIONAL LEVEL
ATC

RADAR APP 125.75
TWR 118.45
GND 121.65
ATIS 127.00

**DURBAN
(KING SHAKA INTERNATIONAL)
RNAV (GNSS) RWY 24
BIGSA 1B**



CHANGE: Minimum Flight Altitude/Com Failure Procedure

**BIGSA 1B
RWY 24**

Leave BIGSA for LE008. At LE008 turn left proceeding to LE2N1 for radar vectors onto the ILS LOC RWY 24 and land.

COMMUNICATION FAILURE PROCEDURE (Squawk 7600)

Before BIGSA: Proceed to BIGSA and comply with the "After BIGSA" Communication Failure Procedure.

After BIGSA: Continue on the BIGSA 1B RNAV (GNSS) STAR and maintain last assigned level. Passing LE007 descend to FL080. At LE008 (not below 5600'ALT), turn left to LE2N1 and continue with the RNAV (GNSS) RWY 24 APCH and intercept the ILS LOC RWY 24 and land RWY 24.

In the event of a missed approach with the intention of diverting to an alternate aerodrome, proceed as follows:
Comply with the OKTAN 1A RNAV (GNSS) SID. At OKTAN continue to the diversion aerodrome.