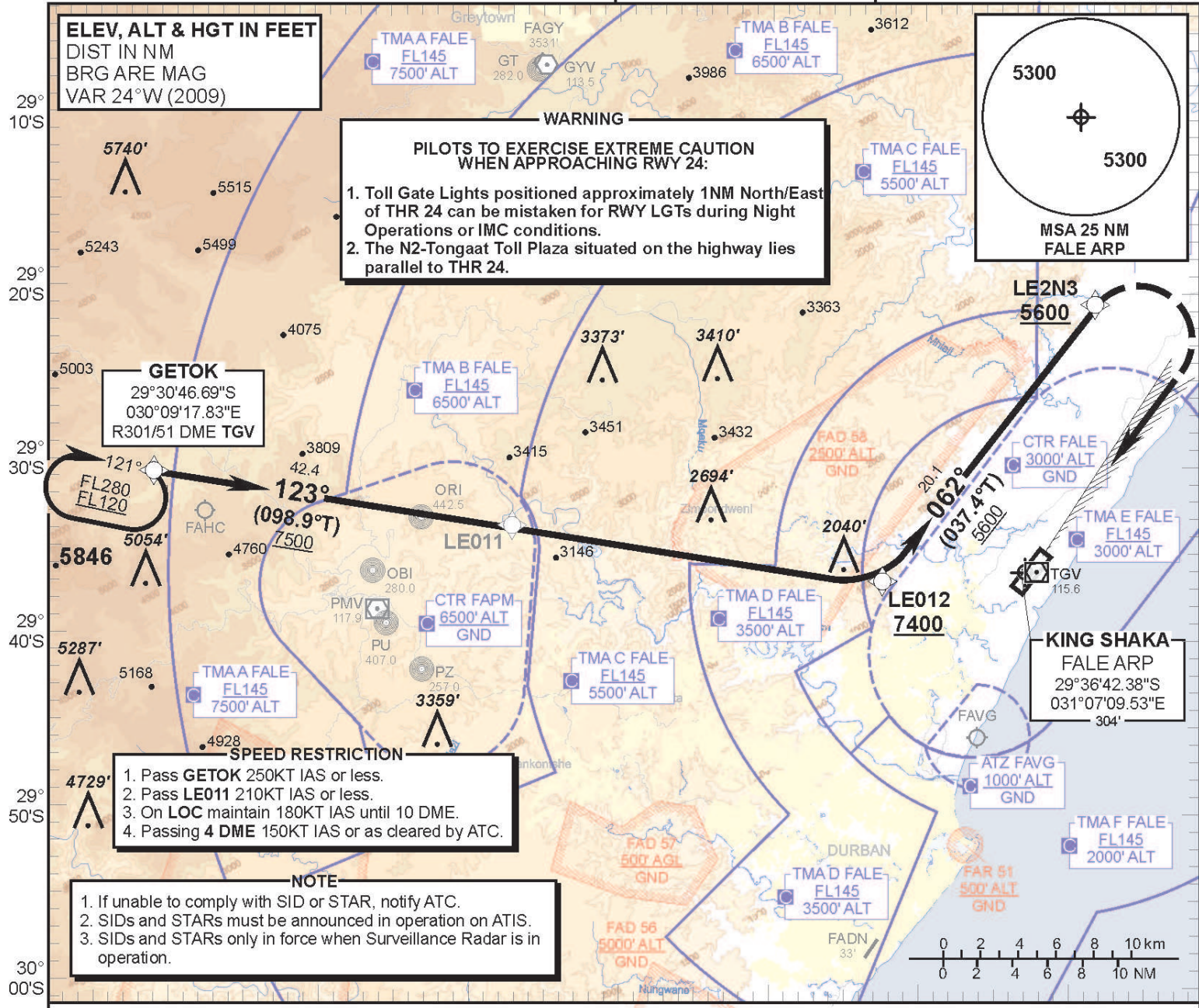


**STANDARD ARRIVAL
CHART -
INSTRUMENT
(STAR)**

TRANSITIONAL ALTITUDE
5500'
TRANSITIONAL LEVEL
ATC

RADAR APP 125.75
TWR 118.45
GND 121.65
ATIS 127.00

DURBAN
(KING SHAKA INTERNATIONAL)
RNAV (GNSS) RWY 24
GETOK 1D



WARNING

**PILOTS TO EXERCISE EXTREME CAUTION
WHEN APPROACHING RWY 24:**

1. Toll Gate Lights positioned approximately 1NM North/East of THR 24 can be mistaken for RWY LGTs during Night Operations or IMC conditions.
2. The N2-Tongaat Toll Plaza situated on the highway lies parallel to THR 24.

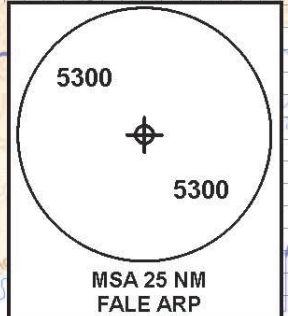
GETOK
29°30'46.69"S
030°09'17.83"E
R301/51 DME TGV

SPEED RESTRICTION

1. Pass **GETOK** 250KT IAS or less.
2. Pass **LE011** 210KT IAS or less.
3. On **LOC** maintain 180KT IAS until 10 DME.
4. Passing **4 DME** 150KT IAS or as cleared by ATC.

NOTE

1. If unable to comply with SID or STAR, notify ATC.
2. SIDs and STARs must be announced in operation on ATIS.
3. SIDs and STARs only in force when Surveillance Radar is in operation.



**GETOK 1D
RWY 24**

Leave GETOK for LE012. At LE012 turn left to LE2N3 for radar vectors onto the ILS LOC RWY 24.

COMMUNICATION FAILURE PROCEDURE (Squawk 7600)

Before GETOK: Proceed to GETOK and enter the the GETOK hold. Hold at last assigned level for minimum 5 MIN, then descend to FL120 in the hold, or maintain last assigned level if below FL120. Leave GETOK on the "After GETOK" Communication Failure Procedure.

After GETOK: Continue on the GETOK 1D RNAV (GNSS) STAR and maintain FL120. At LE012 (not below 7400' ALT) turn left to LE2N3 (not below 5600' ALT) and continue with the RNAV (GNSS) RWY 24 APCH and intercept the ILS LOC RWY 24 and land RWY 24.

In the event of a missed approach with the intention of diverting to an alternate aerodrome, proceed as follows:
Comply with the OKTAN 1A RNAV (GNSS) SID. At OKTAN continue to the diversion aerodrome.

CHANGE: HAZARD WARNING