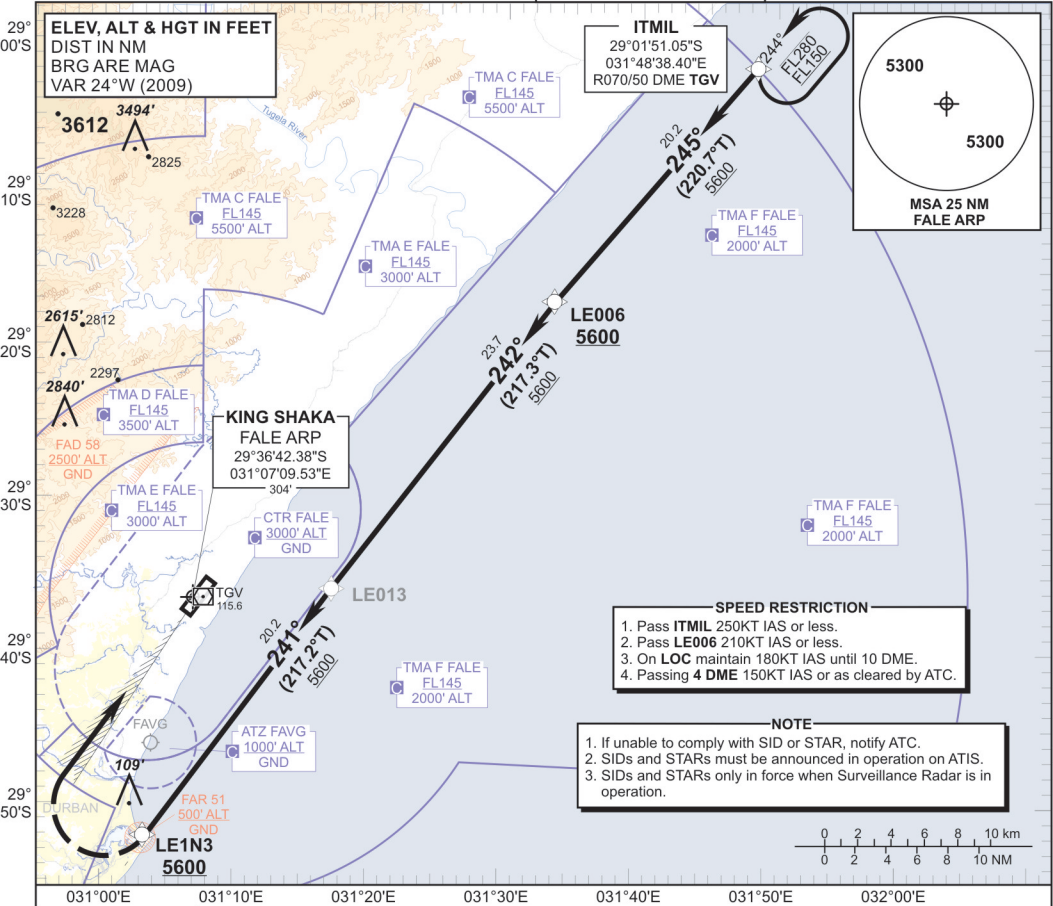


**STANDARD ARRIVAL  
CHART -  
INSTRUMENT  
(STAR)**

TRANSITIONAL ALTITUDE  
**5500'**  
TRANSITIONAL LEVEL  
**ATC**

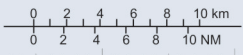
RADAR APP 125.75  
TWR 118.45  
GND 121.65  
ATIS 127.00

**DURBAN**  
(KING SHAKA INTERNATIONAL)  
**RNAV (GNSS) RWY 06**  
ITMIL 1A



- SPEED RESTRICTION**
1. Pass **ITMIL** 250KT IAS or less.
  2. Pass **LE006** 210KT IAS or less.
  3. On **LOC** maintain 180KT IAS until 10 DME.
  4. Passing **4 DME** 150KT IAS or as cleared by ATC.

- NOTE**
1. If unable to comply with SID or STAR, notify ATC.
  2. SIDs and STARs must be announced in operation on ATIS.
  3. SIDs and STARs only in force when Surveillance Radar is in operation.



CHANGE: ARP/Minimum Flight Altitude

<b>ITMIL 1A : RWY 06</b>	<p>Leave <b>ITMIL</b> for <b>LE006</b>. At <b>LE006</b> proceed to <b>LE013</b>. At <b>LE013</b> turn right to <b>LE1N3</b> for radar vectors onto the <b>ILS LOC RWY 06</b>.</p> <p><b>COMMUNICATION FAILURE PROCEDURE (Squawk 7600)</b></p> <p><b>Before ITMIL:</b> Proceed to <b>ITMIL</b> and enter the <b>ITMIL RNAV (GNSS)</b> hold. Hold at last assigned level, for minimum 5 MIN, then descend to <b>FL090</b> in the hold or maintain last assigned level if below <b>FL090</b>. Leave <b>ITMIL</b> on the "<b>After ITMIL</b>" Communication Failure Procedure.</p> <p><b>After ITMIL:</b> Continue on the <b>ITMIL 1A RNAV (GNSS) STAR</b>, maintaining last assigned level. At <b>LE013</b> descend to <b>FL080</b> and continue to <b>LE1N3</b>. At <b>LE1N3</b> (not below <b>5600' ALT</b>) continue with the <b>RNAV (GNSS) RWY 06 APCH</b> and intercept the <b>ILS LOC RWY 06</b> and land <b>RWY 06</b>.</p> <p>In the event of a missed approach with the intention of diverting to an alternate aerodrome, proceed as follows: Comply with the <b>ITMIL 1C RNAV (GNSS) SID</b>. At <b>ITMIL</b> continue to the diversion aerodrome.</p>
------------------------------	--