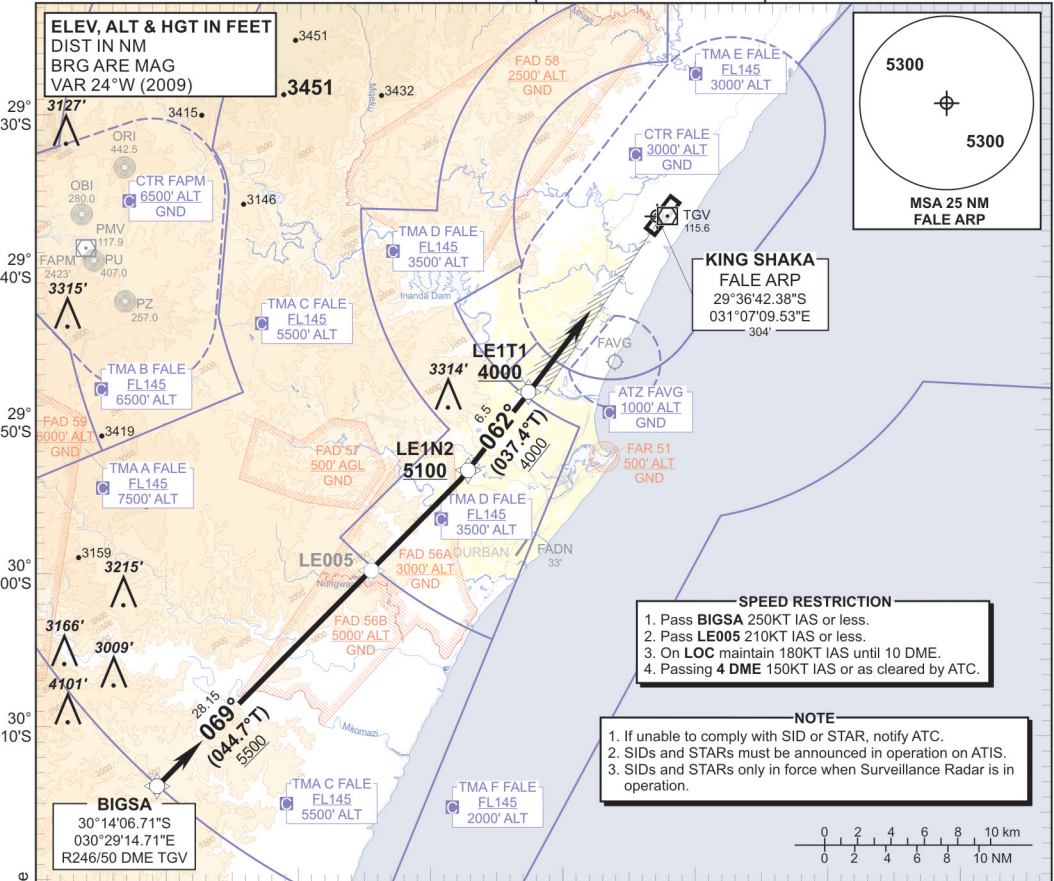


**STANDARD ARRIVAL
CHART -
INSTRUMENT
(STAR)**

TRANSITIONAL ALTITUDE
5500'
TRANSITIONAL LEVEL
ATC

RADAR APP 125.75
TWR 118.45
GND 121.65
ATIS 127.00

**(KING SHAKA INTERNATIONAL)
RNAV (GNSS) RWY 06
BIGSA 1A**



CHANGE: ARP/Minimum Flight Altitude/ Com Failure Procedure

**BIGSA 1A
RWY 06**

Leave BIGSA for LE1N2. At LE1N2 turn left to LE1T1 and intercept the ILS LOC RWY 06.

COMMUNICATION FAILURE PROCEDURE (Squawk 7600)

Before BIGSA: Proceed to BIGSA and comply with the "After BIGSA" Communication Failure Procedure.

After BIGSA: Continue on the BIGSA 1A RNAV (GNSS) STAR maintaining last assigned level. Passing LE005 descend to FL080. At LE1N2 (not below 5100' ALT) continue to LE1T1 (not below 4000' ALT). Continue with the RNAV (GNSS) RWY 06 APCH and intercept the ILS LOC RWY 06 and land RWY 06.

In the event of a missed approach with the intention of diverting to an alternate aerodrome, proceed as follows:
Comply with the ITMIL 1C RNAV (GNSS) SID. At ITMIL continue to the diversion aerodrome.

EFF: 06 MAY 10