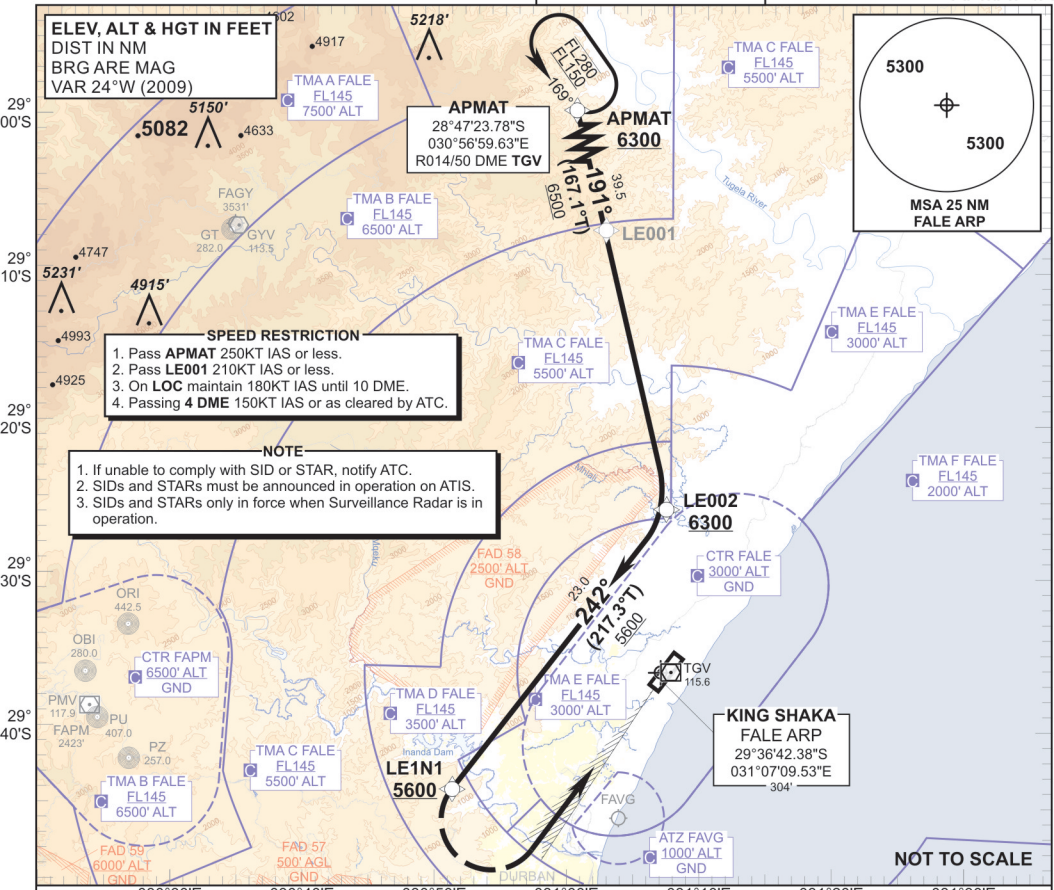


**STANDARD ARRIVAL
CHART -
INSTRUMENT
(STAR)**

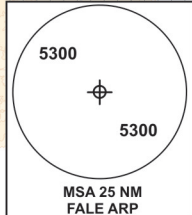
TRANSITIONAL ALTITUDE
5500'
TRANSITIONAL LEVEL
ATC

RADAR APP 125.75
TWR 118.45
GND 121.65
ATIS 127.00

DURBAN
(KING SHAKA INTERNATIONAL)
RNAV (GNSS) RWY 06
APMAT 1A



**ELEV, ALT & HGT IN FEET
DIST IN NM
BRG ARE MAG
VAR 24°W (2009)**



- SPEED RESTRICTION**
1. Pass **APMAT** 250KT IAS or less.
 2. Pass **LE001** 210KT IAS or less.
 3. On **LOC** maintain 180KT IAS until 10 DME.
 4. Passing **4 DME** 150KT IAS or as cleared by ATC.

- NOTE**
1. If unable to comply with SID or STAR, notify ATC.
 2. SIDs and STARS must be announced in operation on ATIS.
 3. SIDs and STARS only in force when Surveillance Radar is in operation.

**APMAT 1A
RWY 06**

Leave **APMAT** for **LE002**. At **LE002** turn right for **LE1N1**. At **LE1N1** turn left for radar vectors onto **ILS LOC RWY 06**.

COMMUNICATION FAILURE PROCEDURE (Squawk 7600)

Before APMAT: Proceed to **APMAT** and enter the **APMAT RNAV (GNSS)** hold. Hold at last assigned level, for minimum 5 MIN, then descend to **FL130** in the hold or maintain last assigned level if below **FL130**. Leave **APMAT** on the "**After APMAT**" Communication Failure Procedure.

After APMAT: Continue on the **APMAT 1A RNAV (GNSS) STAR** maintaining last assigned level. Passing **LE001** descend to **FL080**. At **LE002** (not below **6300'** ALT) turn right to **LE1N1** (not below **5600'** ALT). Continue with the **RNAV (GNSS) RWY 06 APCH** to **LE1N1** and intercept the **ILS LOC RWY 06** and land **RWY 06**.

In the event of a missed approach with the intention of diverting to an alternate aerodrome, proceed as follows:
Comply with the **ITMIL 1C RNAV (GNSS) SID**. At **ITMIL** continue to the diversion aerodrome.

CHANGE: ARP/Minimum Flight Altitude

EFF: 06 MAY 10