

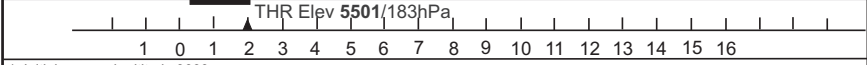
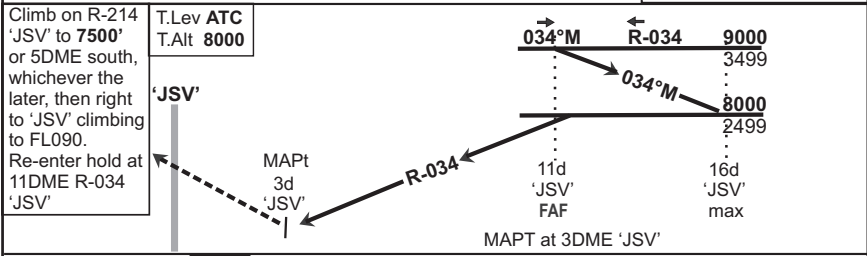
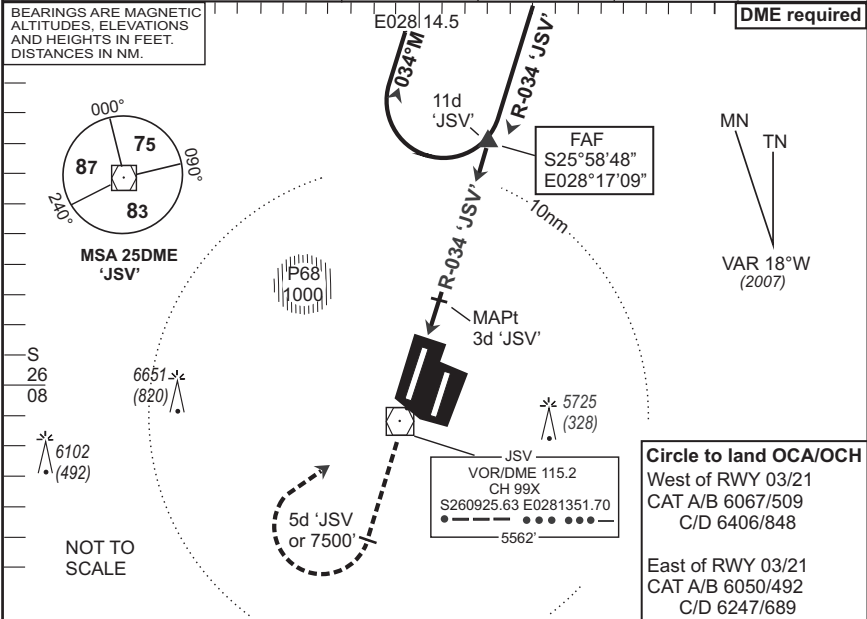
**INSTRUMENT APPROACH CHART**

**AERODROME ELEV 5558  
HEIGHTS RELATED TO  
THR RWY 21R - ELEV 5501FT**

**(O R TAMBO INTL) JOHANNESBURG  
(Cat A - D) VOR Rwy 21R**

FAJS

<b>JOHANNESBURG Radar (App)</b> 134.4 (N) 123.7 (W) 124.5 (W & SE)	<b>Tower</b> 118.1/121.9	<b>Ground</b> 121.9/121.7	<b>ATIS</b> 126.20	<b>VOR-01</b> EFF 27 Sep 07
	<b>DME required</b>			



- Initial approach altitude 9000.
- Procedure turn approach applicable only within 30° of the outbound heading. Use phraseology "Request procedure turn approach".
- Parallel approach authorised with RWY 21L.
- Radar vectors to the FAF (11DME "JSV") can be expected for straight-in approach RWY 21R.
- RoD from FAF computes at 2.9° angle of descent.

Cat of ACFT	OCA/H				"JSV" 11d - THR						
	A	B	C	D	Speed	Kt	80	100	120	140	160
Straight -in	6060(559)	6060(559)	6060(559)	6060(559)	Time	M:s	6:00	4:49	4:00	3:26	3:00
					Rate of Descent	Fpm	410	510	610	720	820
Approach					"JSV" VOR/DME	9d	8d	7d	6d		
Circling					Advisory Alt/Hgt	7390(1890)	7080(1580)	6780(1280)	6470(970)		

Rev: New Format. Var. Radials & Headings. WGS-84

© AV/DIRECT /2110607

CAA South Africa