

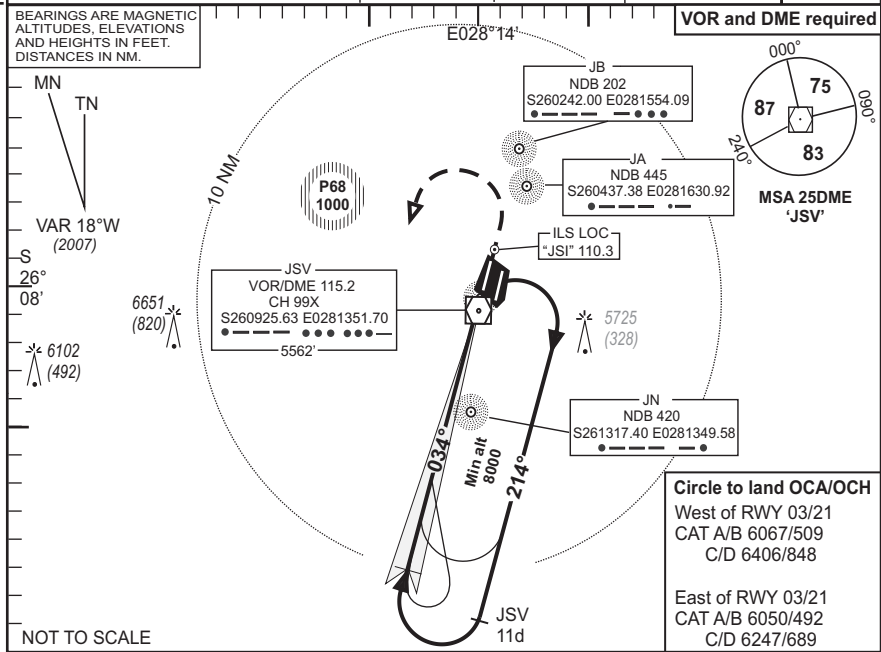
**INSTRUMENT  
APPROACH  
CHART**

**AERODROME ELEV 5558  
HEIGHTS RELATED TO  
THR RWY 03L - ELEV 5558**

**(O R TAMBO INTL)  
(Cat A - D)**

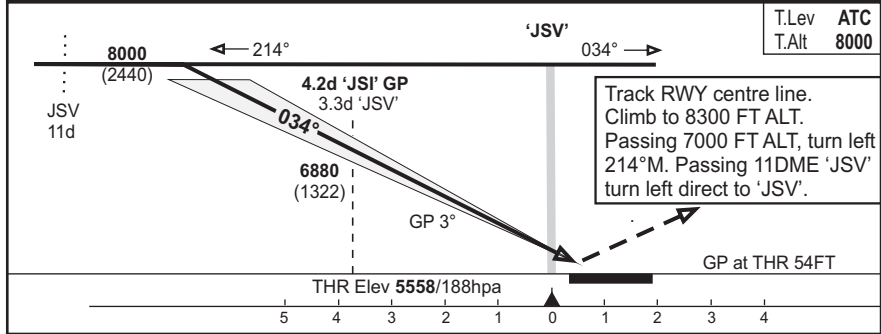
**JOHANNESBURG  
ILS Rwy 03L**

<b>FAJS</b>	<b>JOHANNESBURG Radar (App)</b> 134.4 (N) 123.7 (W) 124.5 (W & SE)	<b>Tower</b> 118.1/121.9	<b>Ground</b> 121.9/121.7	<b>ATIS</b> 126.20	<b>ILS-01</b> EFF 27 Sep 07
	BEARINGS ARE MAGNETIC ALTITUDES, ELEVATIONS AND HEIGHTS IN FEET. DISTANCES IN NM.				



NOT TO SCALE

**Circle to land OCA/OCH**  
West of RWY 03/21  
CAT A/B 6067/509  
C/D 6406/848  
  
East of RWY 03/21  
CAT A/B 6050/492  
C/D 6247/689



- Initial approach altitude **8000** or higher MSA.
- Procedure turn approach applicable only within 30° of the outbound heading. Use phraseology "Request procedure turn approach".
- Parallel approach authorised with 03R.
- Cat 2 operation and minima must be approved by CAA.
- DME "JSI" (110.3 MHz) collocated with GP transmitter.
- Missed approach with Comm Fail, climb to **8700** FT ALT. Passing **7000** FT ALT turn left 214°M. Passing 11DME "JSV" turn left direct "JSV".

OCA(H)					"JSI" 4.2d - THR							
Cat of ACFT	A	B	C	D	Speed	Kt	80	100	120	140	160	
Straight -in	Cat 1	5706(148)	5715(157)	5726(168)	5736(178)	Time	M:s	2:57	2:22	1:59	1:42	1:29
	Cat 11	5610(52)	5623(65)	5637(79)	5650(92)	Rate of Descent	Fpm	420	530	640	740	850
Approach	GP INOP				"JSI" ILS/DME		3d		2d		1d	
Circling					Advisory Alt/Hgt		6500(940)	6190(630)		5880(320)		

Rev: New Format. Var. Radials & Headings. OM Alt.

WGS-84