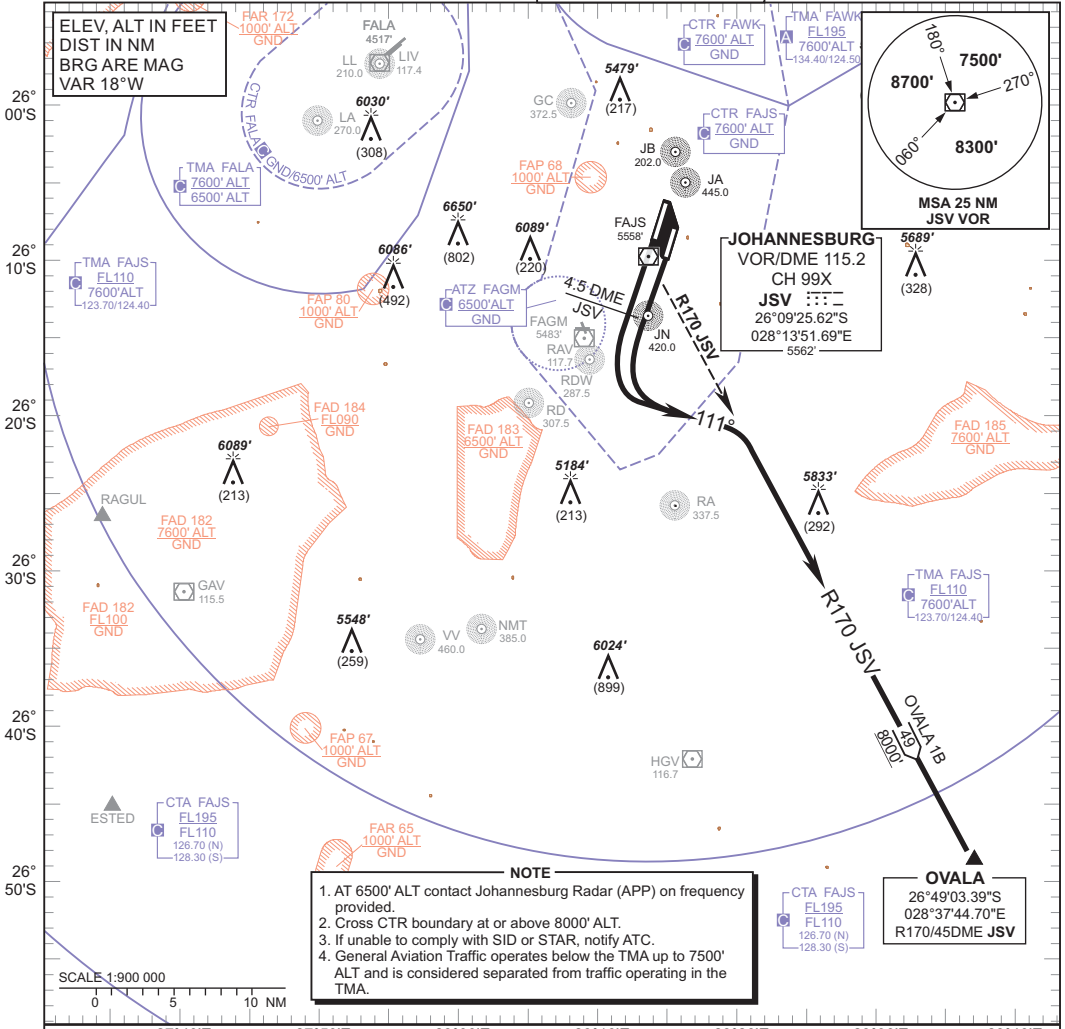


**STANDARD DEPARTURE
CHART -
INSTRUMENT
(SID)**

TRANSITIONAL ALTITUDE
8000'
TRANSITIONAL LEVEL
ATC

RADAR APP 124.50 (W & SE)
TWR 118.10/118.60
SMC 121.90
ATIS 126.20/115.20

JOHANNESBURG
(O.R. TAMBO INTERNATIONAL)
RWY 21
OVALA 1B



CHANGE: ATIS FREQ

**OVALA 1B,
RWY 21**

Climb to 8000' ALT, maintain RWY track to 4.5 DME JSV then turn left onto track 111° to intercept R170 JSV (OUBD) to OVALA. Cross 4.5 DME JSV at 7000' ALT or above. Further climb will be under radar control. At OVALA set course as per flight plan.

Restricted to a minimum climb gradient of 4.2% to CTR boundary. Cross the CTR boundary at minimum 8000' ALT.

4.2% @ 140KT IAS = 596 FPM
4.2% @ 180KT IAS = 766 FPM
4.2% @ 220KT IAS = 936 FPM

COMMUNICATION FAILURE PROCEDURE (Squawk 7600)

Comply with OVALA 1B SID, climbing to 8300' ALT or maintain last assigned level, whichever is highest. At OVALA continue as per flight plan.

Aircraft wishing to return must continue to SID termination point and climb to last assigned level or MSA if last cleared level is below MSA. At OVALA route direct to STV and comply with the appropriate STAR Communication Failure procedure.