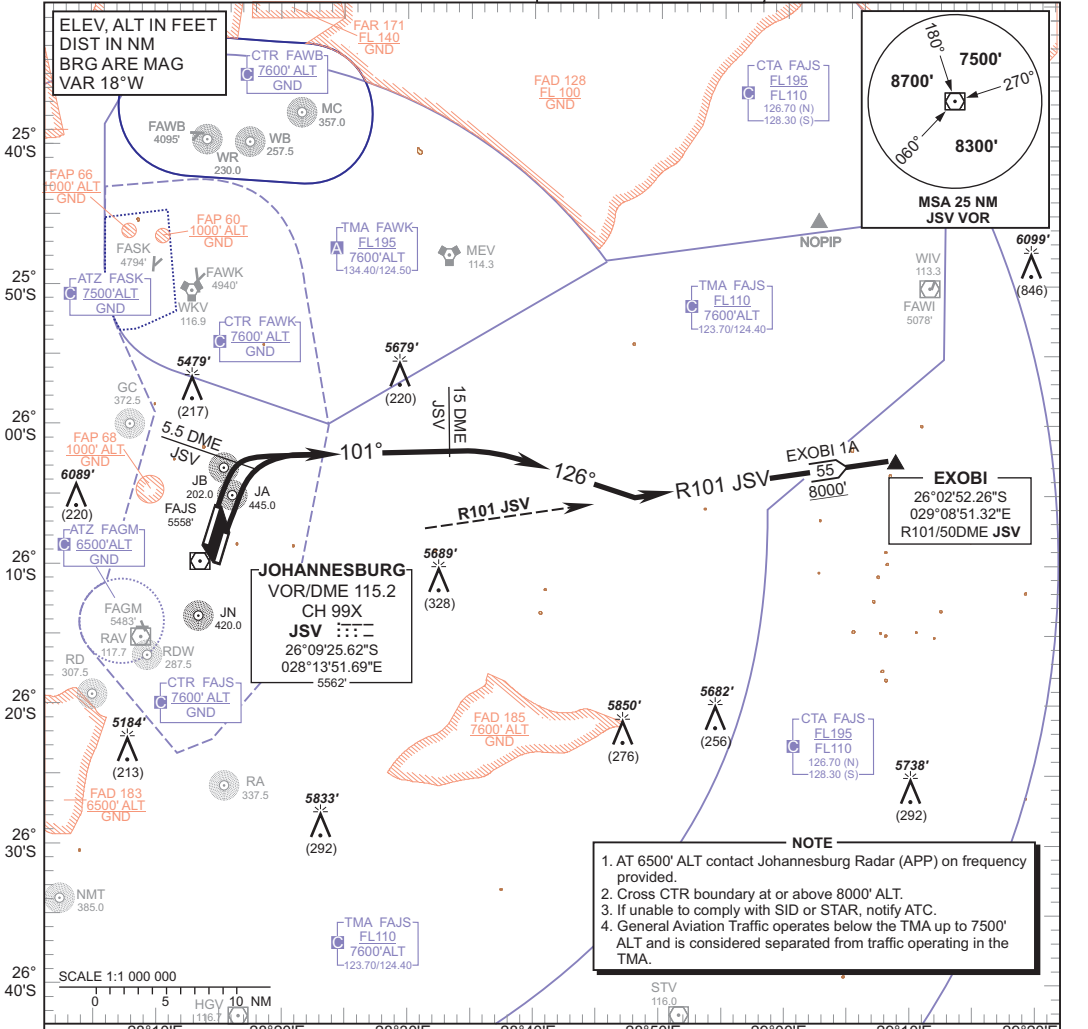


**STANDARD DEPARTURE
CHART -
INSTRUMENT
(SID)**

TRANSITIONAL ALTITUDE
8000'
TRANSITIONAL LEVEL
ATC

RADAR APP 124.50 (W & SE)
TWR 118.10/118.60
SMC 121.90
ATIS 126.20/115.20

JOHANNESBURG
(O.R. TAMBO INTERNATIONAL)
RWY 03
EXOBI 1A



NOTE

1. AT 6500' ALT contact Johannesburg Radar (APP) on frequency provided.
2. Cross CTR boundary at or above 8000' ALT.
3. If unable to comply with SID or STAR, notify ATC.
4. General Aviation Traffic operates below the TMA up to 7500' ALT and is considered separated from traffic operating in the TMA.

**EXOBI 1A,
RWY 03 :**

Climb to FL090, maintain RWY track to 5.5 DME JSV, then turn right onto track 101°. At 15 DME JSV turn right onto track 126° to intercept R101 JSV (OUBD) to EXOBI. Cross 15 DME JSV at FL090, or above if cleared by ATC. Further climb will be under radar control. At EXOBI set course as per flight plan.

Restricted to a minimum climb gradient of 4.2% to CTR boundary. Cross CTR boundary at minimum 8000' ALT.

- 4.2% @ 140KT IAS = 596 FPM
- 4.2% @ 180KT IAS = 766 FPM
- 4.2% @ 220KT IAS = 936 FPM

COMMUNICATION FAILURE PROCEDURE (Squawk 7600)

Comply with EXOBI 1A SID, climbing to FL090 or maintain last assigned level, whichever is the highest. At EXOBI set course as per flight plan and climb to flight plan level.

Aircraft wishing to return must continue to the SID termination point and climb to the last assigned level or MSA if last cleared level is below MSA. At EXOBI proceed to WIV and comply with the appropriate STAR Communication Failure Procedure.

CHANGE: ATIS FREQ