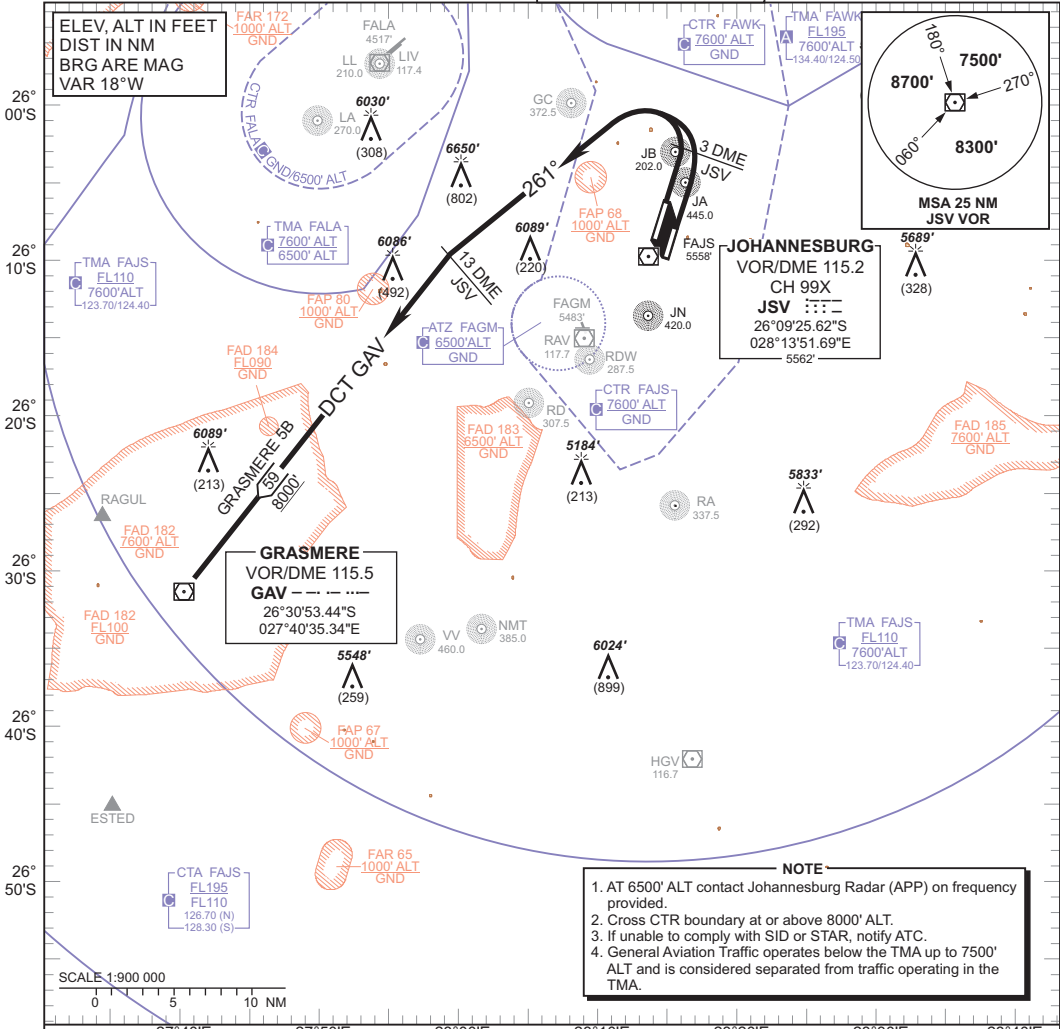


**STANDARD DEPARTURE
CHART -
INSTRUMENT
(SID)**

TRANSITIONAL ALTITUDE
8000'
TRANSITIONAL LEVEL
ATC

RADAR APP 124.50 (W & SE)
TWR 118.10/118.60
SMC 121.90
ATIS 126.20/115.20

JOHANNESBURG
(O.R. TAMBO INTERNATIONAL)
RWY 03
GRASMERE 5B



NOTE

1. AT 6500' ALT contact Johannesburg Radar (APP) on frequency provided.
2. Cross CTR boundary at or above 8000' ALT.
3. If unable to comply with SID or STAR, notify ATC.
4. General Aviation Traffic operates below the TMA up to 7500' ALT and is considered separated from traffic operating in the TMA.

CHANGE: ATIS FREQ

**GRASMERE 5B,
RWY 03**

Climb to 8000' ALT, maintain RWY track to 3 DME JSV or 6100' ALT, whichever is later, then turn left onto track 261°. Crossing 13 DME JSV turn left direct to GAV. Further climb will be under radar control. At GAV set course as per flight plan.

Restricted to a minimum climb gradient of 5.0% to CTR boundary.
 5.0% @ 90KT IAS = 456 FPM
 5.0% @ 120KT IAS = 608 FPM
 5.0% @ 180KT IAS = 911 FPM
 5.0% @ 210KT IAS = 1063 FPM

COMMUNICATION FAILURE PROCEDURE (Squawk 7600)

Comply with GRASMERE 5B SID, climbing to 8700' ALT or maintain last assigned level, whichever is the highest. At GAV set course as per flight plan and climb to flight plan level.

Aircraft wishing to return must continue to the SID termination point and climb to the last assigned level or MSA if last cleared level is below MSA. At GAV proceed to ESTED and comply with the appropriate STAR Communication Failure Procedure.