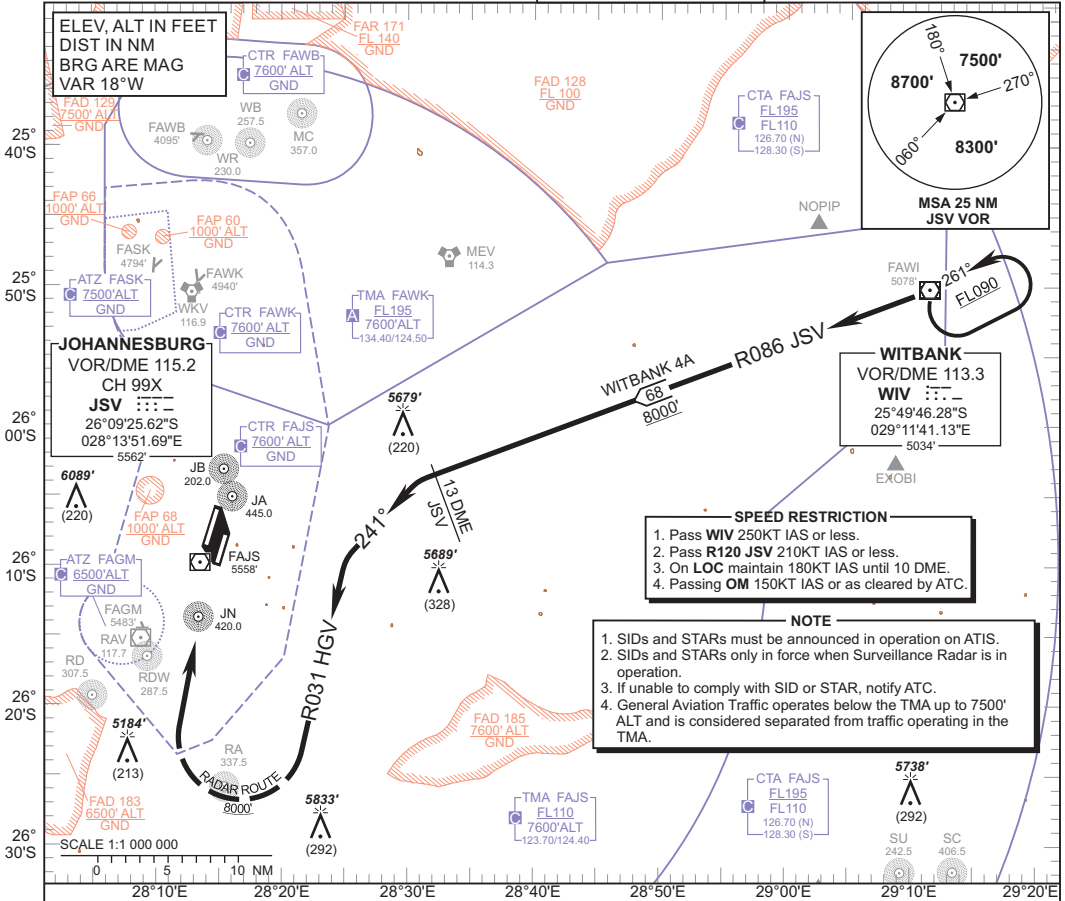


**STANDARD ARRIVAL
CHART -
INSTRUMENT
(STAR)**

TRANSITIONAL ALTITUDE
8000'
TRANSITIONAL LEVEL
ATC

RADAR APP 124.50 (W & SE)
TWR 118.10/118.60
SMC 121.90
ATIS 126.20/115.20

JOHANNESBURG
(O.R. TAMBO INTERNATIONAL)
RWY 03
WITBANK 4A



**WITBANK 4A:
RWY 03**

Leave WIV on R086 JSV (INBD). Passing 13 DME JSV turn left onto track 241° to intercept R031 HGV (INBD) for radar vectoring onto the ILS RWY 03.

COMMUNICATION FAILURE PROCEDURE (Squawk 7600)

- Before WIV:** Proceed to WIV and enter the WIV hold. Hold at last assigned level for minimum 5 minutes, then descend to FL130 in the hold or maintain last assigned level if below FL130. Leave WIV on the "After WIV" Communication Failure Procedure.
- After WIV:** Continue on the routing for the **WITBANK 4A STAR**. Crossing R141 JSV, while established on R031 HGV, descend to FL090. Passing 15 DME JSV on R031 HGV turn right onto track 301° and descend to 8300' ALT. Crossing R206 JSV turn right onto track 001° to intercept the LOC RWY 03R. Complete a straight-in ILS APCH and land RWY 03R.
- Note:** Aircraft entering the TMA at FL110 and below are to enter the WIV hold at last assigned level, and continue on the routing for the WITBANK 4A STAR.
- Caution:** Holding patterns below FL110 will be conducted partially outside controlled airspace.

In the event of a missed approach with the intention of diverting to an alternate aerodrome, proceed as follows:

- To the North and North-West: Follow the routing for the VASUR 1A SID.
- To the East and North-East: Follow the routing for the NOPIP 2A SID (Jet ACFT) or EXOBI 1A SID (Turboprop ACFT).
- To the South-East: Follow the routing for the APDAK 1A SID.
- To the West and South-West: Follow the routing for the RAGUL 1A SID.

CHANGE: ATIS FREQ