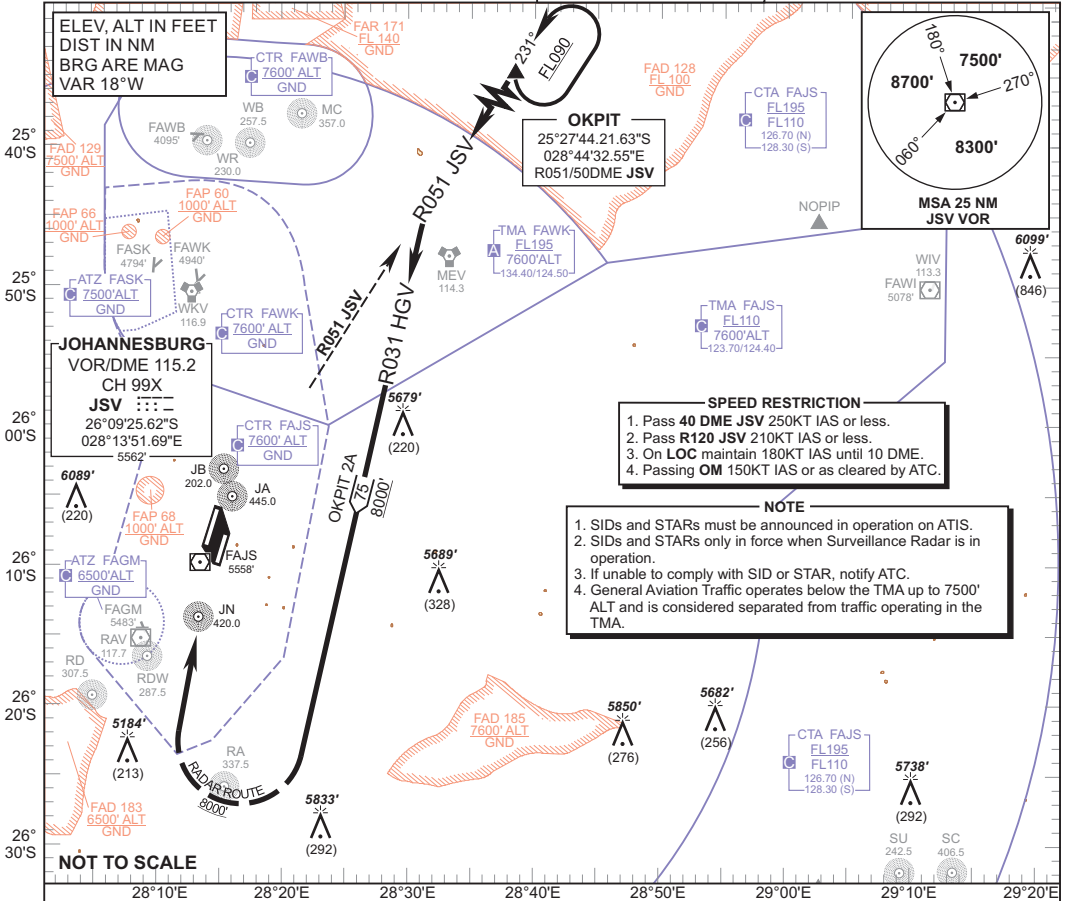


**STANDARD ARRIVAL
CHART -
INSTRUMENT
(STAR)**

TRANSITIONAL ALTITUDE
8000'
TRANSITIONAL LEVEL
ATC

RADAR APP 124.50 (W & SE)
TWR 118.10/118.60
SMC 121.90
ATIS 126.20/115.20

JOHANNESBURG
(O.R. TAMBO INTERNATIONAL)
RWY 03
OKPIT 2A



SPEED RESTRICTION

1. Pass **40 DME JSV** 250KT IAS or less.
2. Pass **R120 JSV** 210KT IAS or less.
3. On **LOC** maintain 180KT IAS until 10 DME.
4. Passing **OM** 150KT IAS or as cleared by ATC.

NOTE

1. SIDs and STARs must be announced in operation on ATIS.
2. SIDs and STARs only in force when Surveillance Radar is in operation.
3. If unable to comply with SID or STAR, notify ATC.
4. General Aviation Traffic operates below the TMA up to 7500' ALT and is considered separated from traffic operating in the TMA.

NOT TO SCALE

**OKPIT 2A
RWY 03**

Leave OKPIT on R051 JSV (INBD) to intercept R031 HGV (INBD) for radar vectoring onto the ILS RWY 03.

COMMUNICATION FAILURE PROCEDURE (Squawk 7600)

Before OKPIT: Proceed to OKPIT and enter the OKPIT hold. Hold at last assigned level for minimum 5 minutes, then descend to FL130 in the hold, or maintain last assigned level if below FL130. Leave OKPIT on the "After OKPIT" Communication Failure Procedure.

After OKPIT: Continue on the routing for the OKPIT 2A STAR. Crossing R086 JSV, while established on R031 HGV, descend to FL100. Passing 15 DME JSV on R031 HGV turn right onto track 301° and descend to 8300' ALT. Crossing R206 JSV turn right onto track 001° to intercept the LOC RWY 03R. Complete a straight-in ILS APCH and land RWY 03R.

Note: Aircraft entering the TMA at FL110 and below are to enter the OKPIT hold at last assigned level, and continue on the routing for the OKPIT 2A STAR.

Caution: Holding patterns below FL 110 will be conducted partially outside controlled airspace.

In the event of a missed approach with the intention of diverting to an alternate aerodrome, proceed as follows:

- To the North and North-West: Follow the routing for the VASUR 1A SID.
- To the East and North-East: Follow the routing for the NOPIP 2A SID (Jet ACFT) or EXOBI 1A SID (Turboprop ACFT).
- To the South-East: Follow the routing for the APDAK 1A SID.
- To the West and South-West: Follow the routing for the RAGUL 1A SID.

CHANGE: ATIS FREQ