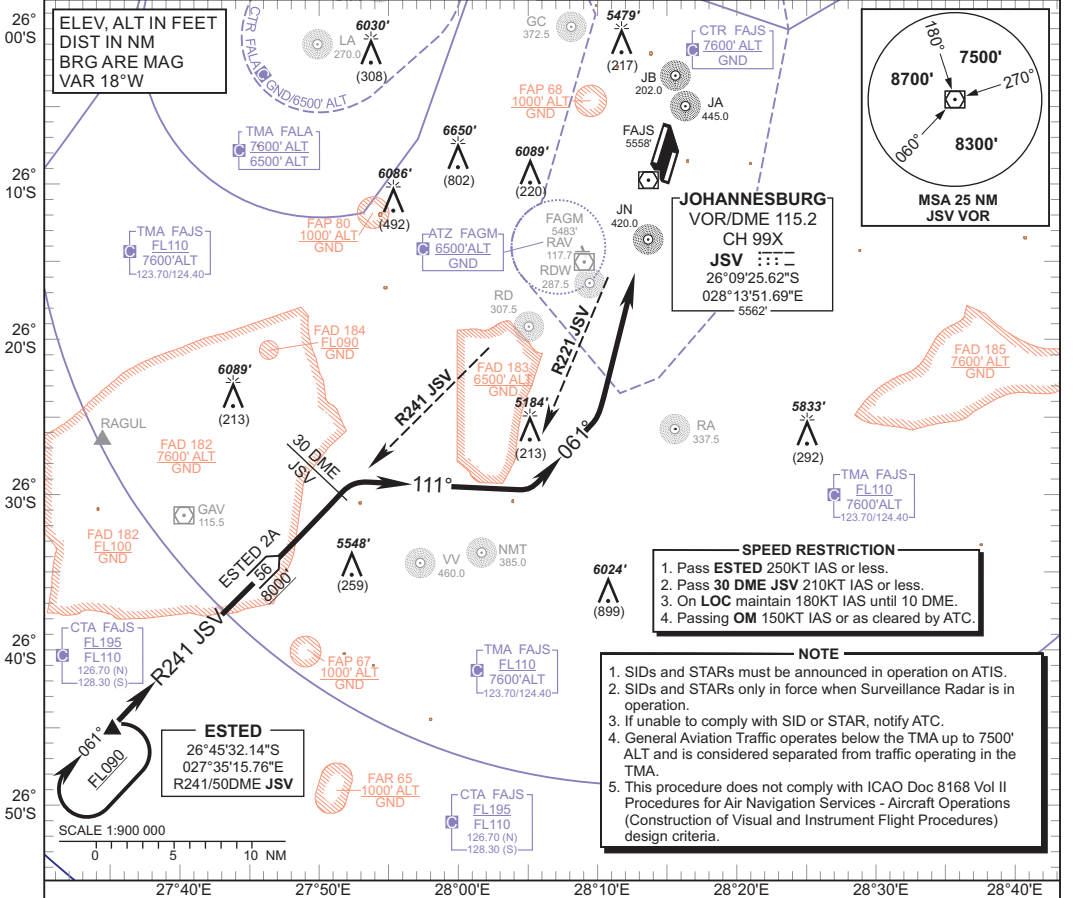


**STANDARD ARRIVAL
CHART -
INSTRUMENT
(STAR)**

TRANSITIONAL ALTITUDE
8000'
TRANSITIONAL LEVEL
ATC

RADAR APP 124.50 (W & SE)
TWR 118.10/118.60
SMC 121.90
ATIS 126.20/115.20

JOHANNESBURG
(O.R. TAMBO INTERNATIONAL)
RWY 03
ESTED 2A



**ESTED 2A,
RWY 03**

Leave ESTED on R241 JSV (INBD). At 30 DME JSV turn right onto track 111°M. Crossing R221 JSV turn left to track 061° to intercept the ILS LOC for RWY 03.

COMMUNICATION FAILURE PROCEDURE (Squawk 7600)

Before ESTED: Proceed to ESTED and enter the ESTED hold. Hold at last assigned level for minimum 5 minutes, then descend to FL130 in the hold, or maintain last assigned level if below FL130. Leave ESTED on the "After ESTED" Communication Failure Procedure.

After ESTED: Continue on the routing for the ESTED 2A STAR maintain last assigned level. Passing 30 DME JSV descend to FL100. Crossing R221 JSV descend to FL090 and turn left onto track 061° to intercept the LOC RWY 03R. Adjust to 9000' ALT and complete a straight-in ILS APCH and land RWY 03R.

Note: Aircraft entering the TMA at FL110 and below are to enter the ESTED hold at last assigned level, and continue on the routing for the ESTED 2A STAR.

Caution: Holding patterns below FL110 will be conducted partially outside controlled airspace.

In the event of a missed approach with the intention of diverting to an alternate aerodrome, proceed as follows:

- To the North and North-West: Follow the routing for the VASUR 1A SID.
- To the East and North-East: Follow the routing for the NOPIP 2A SID (Jet ACFT) or EXOBI 1A SID (Turboprop ACFT).
- To the South-East: Follow the routing for the APDAK 1A SID.
- To the West and South-West: Follow the routing for the RAGUL 1A SID.

CHANGE: ATIS FREQ