

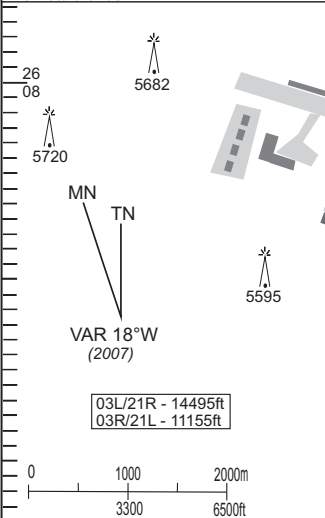
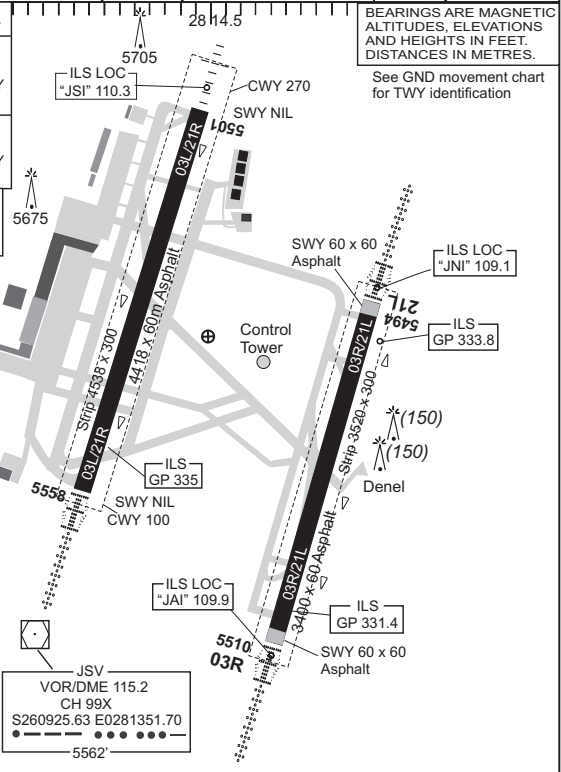
**AERODROME CHART**    **S26°08'01.30"**    **ELEV 5558FT**  
**E028°14'32.34"**

**(O R TAMBO INTL) JOHANNESBURG**

<b>FAJS</b>	<b>Johannesburg</b>	<b>Ground 121.9</b>	<b>Tower 118.1</b>	<b>Radar (App) 134.4 (N)</b>	<b>ATIS 126.20</b>	<b>AD-01</b>
	<b>Clearance 121.7</b>	<b>Apron 122.65 (Arr)</b>	<b>121.9</b>	<b>123.7 (W) 124.5 (SE)</b>		<b>EFF 22 Nov 07</b>

RWY	DIRECTION	THR	BEARING STRENGTH
03L	016°T	S260847.11 E0281403.62	PCN 71/F/B/W/T RWY & SWY ASPH
21R	196°T	S260628.76 E0281446.45	PCN 50/F/A/W/U RWY & SWY ASPH
03R	016°T	S260953.18 E0281453.22	PCN 50/F/A/W/U RWY & SWY ASPH
21L	196°T	S260806.64 E0281526.20	PCN 56/F/A/W/U

**TAXIWAY WIDTH, SURFACES & STRENGTH**  
 Width 30.5m except ECHO which is 60m  
 Surface: ASPH.  
 PCN 56/F/A/W/U.



RWY	PAPI	APPROACH	THR	RUNWAY	L. DIST	SLOPE
03L		PALS - 2		TDZ HRL CLCD CZ EL	Full	+1.2%
21R	P3°	SALS	Gr	HRL CZ EL	Full	-1.2%
03R		PALS - 2	Gr	TDZ HRL CLCD EL	Full	+0.4%
21L	P3°				Full	-0.4%

**OTHER LIGHTING:** Obstruction, Taxiway, Wind indicator, Flood, Apron.

**CIRCLING OCH**  
 A, B 509, C, D 848 (West of 03/21)  
 A, B 492, C, D 689 (East of 03/21)

- Note:**
- RWY 03L, 03R & 21L centerline lights only operational in Cat 2 conditions.
  - Deep ponding occur on RWY after heavy rain.
  - In strong NW conditions severe wind shear can be expected below 300 ft on approach to 03L due to proximity of hangars. In strong wind conditions expect wind shear on final approach to RWY 03R.
  - Bird activity on AD.