

**INSTRUMENT
APPROACH
CHART**

**AERODROME ELEV 33
HEIGHTS RELATED TO
THR RWY 24 - ELEV 31**

(Cat A - D)

**DURBAN INTL
VOR Rwy 24**

FADN

BEARINGS ARE MAGNETIC
ALTITUDES, ELEVATIONS
AND HEIGHTS IN FEET.
DISTANCES IN NM.

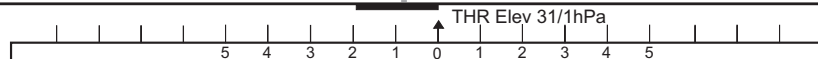
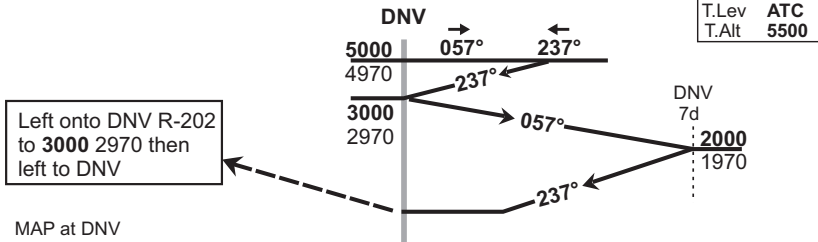
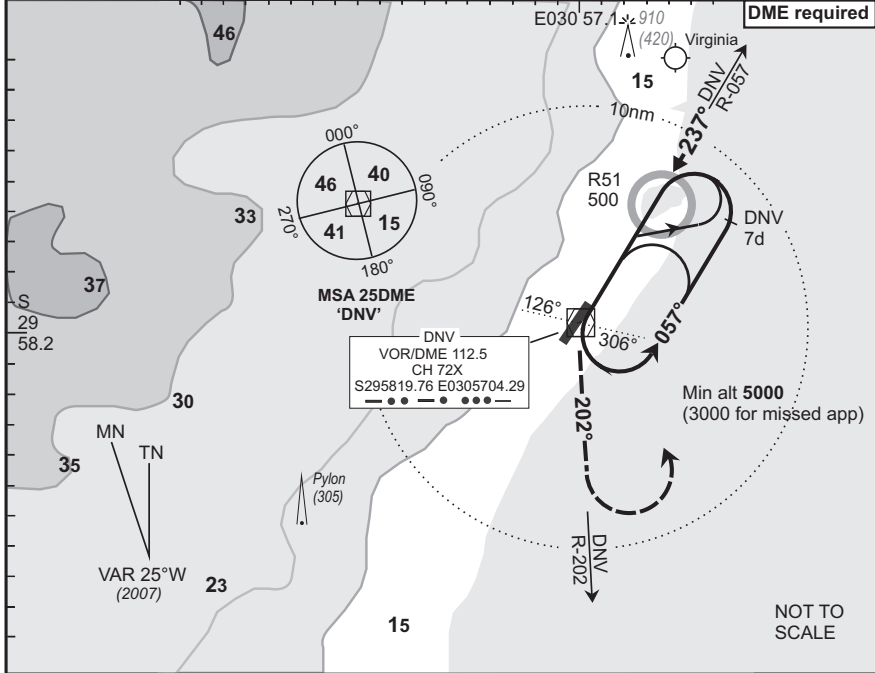
**DURBAN Approach
119.1**

**Tower
118.7**

**ATIS
127.0**

**VOR-02
EFF
05 Jul 07**

DME required



1. Initial approach altitude 5000 or higher MSA.
2. Descend in the hold to 3000.
3. Procedure turn approach applicable only within 30° of the outbound heading. Use phraseology "Request procedure turn approach".
4. RoD from "DNV" 7d computes at 2.9° angle of descent.
5. Circle to land at the discretion of the pilot in command.

OCA/H					"DNV" 7d - THR						
Cat of ACFT	A	B	C	D	Speed	Kt	80	100	120	140	160
Straight	1015(984)	1015(984)	1015(984)	1015(984)	Time	M:s	4:39	3:43	3:06	2:39	2:19
-in					Rate of Descent	Fpm	410	510	610	720	820
Approach	GP INOP				"DNV" VOR/DME	7d	6d		5d		4d
Circling					Advisory Alt/Hgt	2000(1970)	1690(1660)	1390(1360)	1080(1050)		

Rev: New Format. Var. Radials, Headings and Tracks. WGS-84

© AV/DIRECT / 160307

CAA South Africa