

**INSTRUMENT
APPROACH
CHART**

**AERODROME ELEV 33
HEIGHTS RELATED TO
THR RWY 06 - ELEV 33**

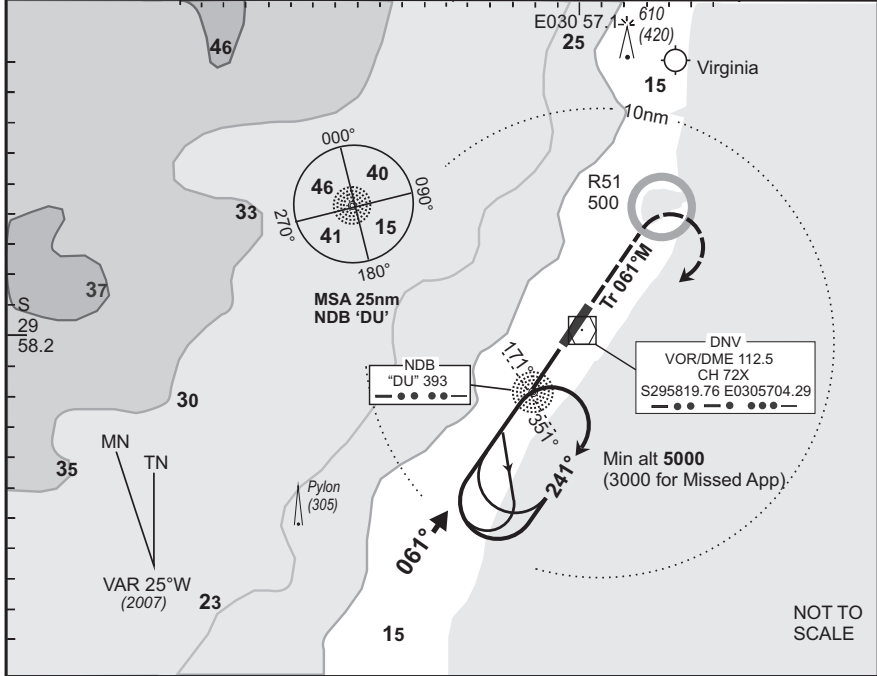
**DURBAN INTL
NDB Rwy 06**

(Cat A - D)

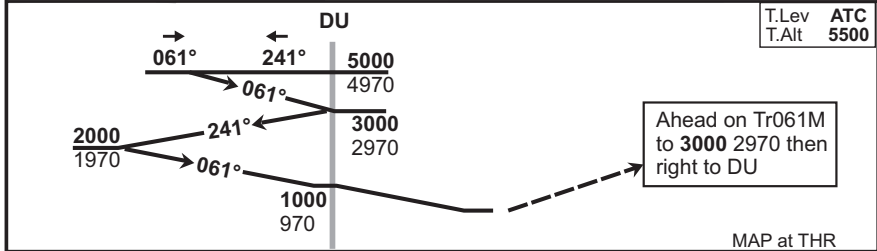
FADN

BEARINGS ARE MAGNETIC ALTITUDES, ELEVATIONS AND HEIGHTS IN FEET. DISTANCES IN NM.	DURBAN Approach 119.1	Tower 118.7	ATIS 127.0	NDB-01 EFF 05 Jul 07
---	---------------------------------	-----------------------	----------------------	-----------------------------------

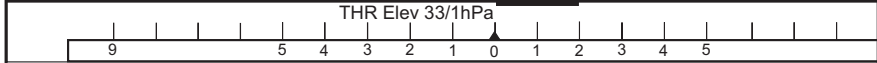
© AV/DIRECT / 160307



NOT TO SCALE



T.Lev **ATC**
T.Alt **5500**



1. Initial approach altitude **5000** or higher MSA.
2. Descend in the hold to **3000**.
3. Procedure turn approach applicable only within 30° of the outbound heading. Use phraseology "Request procedure turn approach".
4. RoD from "DU" computes at 2.5° angle of descent.
5. Circle to land at the discretion of the pilot in command.

Cat of ACFT	OCA/H				"DU" - THR						
	A	B	C	D	Speed	Kt	80	100	120	140	160
Straight	712(679)	712(679)	712(679)	712(679)	Time	M:s	2:37	2:05	1:45	1:30	1:18
-in					Rate of Descent	Fpm	350	440	530	620	700
Approach	GP INOP				Advisory Alt/Hgt	+20s	890(860)	860(830)	830(800)	800(770)	770(740)
Circling					"DU" 1000(970)	+40s	770(740)	712(679)	712(679)	712(679)	712(679)

Rev: New Format. Var. Headings and Tracks. WGS-84