

**INSTRUMENT  
APPROACH  
CHART**

**AERODROME ELEV 33  
HEIGHTS RELATED TO  
THR RWY 06 - ELEV 33**

(CAT A-D)

**DURBAN INTL  
LOC Rwy 06**

**FADN**

BEARINGS ARE MAGNETIC  
ALTITUDES, ELEVATIONS  
AND HEIGHTS IN FEET.  
DISTANCES IN NM.

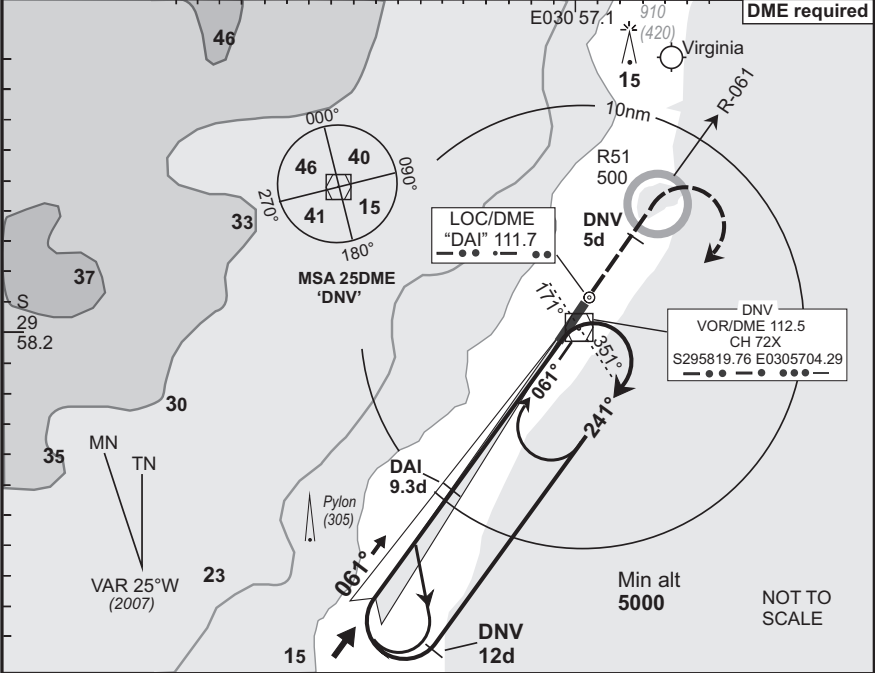
**DURBAN Approach  
119.1**

**Tower  
118.7**

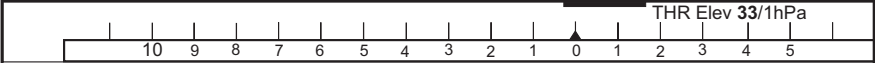
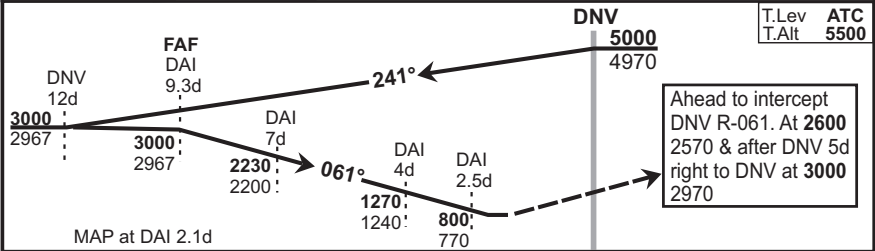
**ATIS  
127.0**

**LOC-01  
EFF  
05 Jul 07**

**DME required**



© AV DIRECT / 160307



1. Initial approach altitude **5000** or higher MSA.
2. If cleared, comply with relevant STAR for straight-in RWY 06 or enter hold and descend to **5000**.
3. Procedure turn approach applicable only within 30° of the outbound heading. Use phraseology "Request procedure turn approach".
4. RoD computes at 3.0° angle of descent.
5. Circle to land at the discretion of the pilot in command.

OCA/H					"DAI" 9.3d - THR						
Cat of ACFT	A	B	C	D	Speed	Kt	80	100	120	140	160
Straight -in	712(679)	712(679)	712(679)	712(679)	Time	M:s	5:24	4:19	3:26	3:05	2:42
					Rate of Descent	Fpm	420	530	640	740	850
Approach	GP INOP				"DAI" ILS/DME	7d	6d	5d	4d		
Circling					Advisory Alt/Hgt	2230(2200)	1910(1880)	1590(1560)	1270(1240)		

Rev: New Format. Var. Radials, Headings and Tracks. WGS-84

CAA South Africa