

**STANDARD  
DEPARTURE CHART  
INSTRUMENT (SID)**

**DURBAN INTL  
RWY 24  
VAVAN 1D**

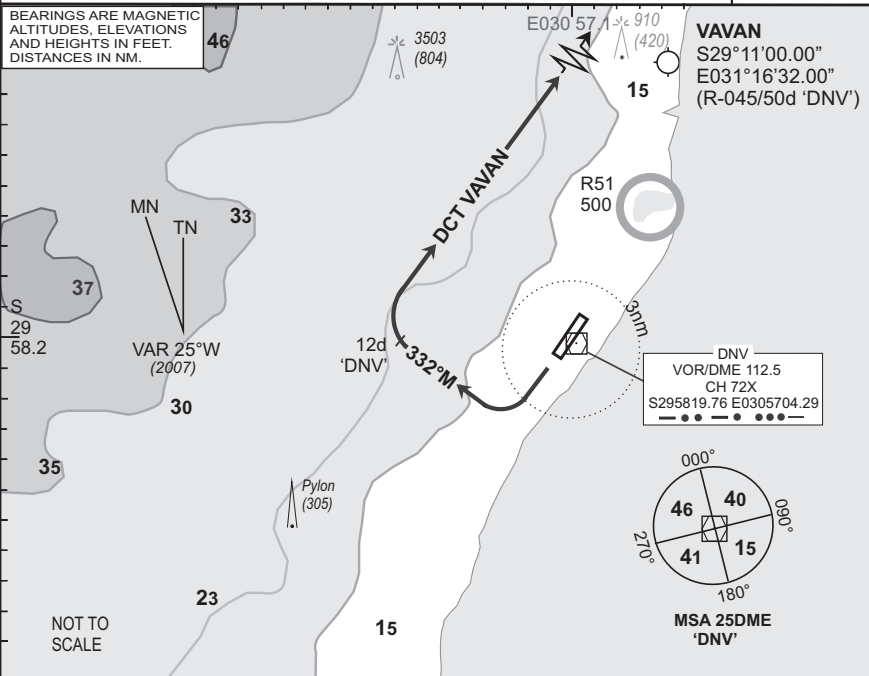
<b>Elev</b> 33	<b>T.alt</b> 5500 <b>T.leve</b> ATC	<b>Approach</b> 119.1	<b>Tower</b> 118.7	<b>ATIS</b> 127.0	<b>DEP-14</b>
-------------------	--	--------------------------	-----------------------	----------------------	---------------

**FADN**

1. At 2000 FT ALT contact DURBAN Radar (APP) on frequency provided in ATC clearance.
2. Only aircraft equipped to comply with Part 91.34 RoA may accept procedures overflying the ocean.
3. If unable to comply with procedure, notify ATC.

**EFF**  
**05 Jul 07**

BEARINGS ARE MAGNETIC  
ALTITUDES, ELEVATIONS  
AND HEIGHTS IN FEET.  
DISTANCES IN NM.



© AV/DIRECT / 140307

SID	RWY	Routing (including Min Noise Routing)
-----	-----	---------------------------------------

VAVAN 1D	24	Climb to FL070, maintain RWY track to 3DME 'D'NV', then turn right to track 332°M to 12DME 'D'NV'. At 12DME 'D'NV' turn right and set course to VAVAN. Further climb will be under radar control. At VAVAN set course as per flight plan.
----------	----	---

Comm Fail (Squawk 7600)		Comply with the VAVAN 1D SID, maintain last assigned level. Passing 30DME 'D'NV' climb to flight plan level. At VAVAN set course as per flight plan.  Aircraft wishing to return must continue to the SID termination point and climb to last assigned level or MSA, if last cleared level is below MSA. At VAVAN comply with the VAVAN 1B STAR Communication Failure procedure.
-------------------------	--	--

CAA South Africa