

**STANDARD  
DEPARTURE CHART  
INSTRUMENT (SID)**

**DURBAN INTL  
RWY 24  
NETIK 1D**

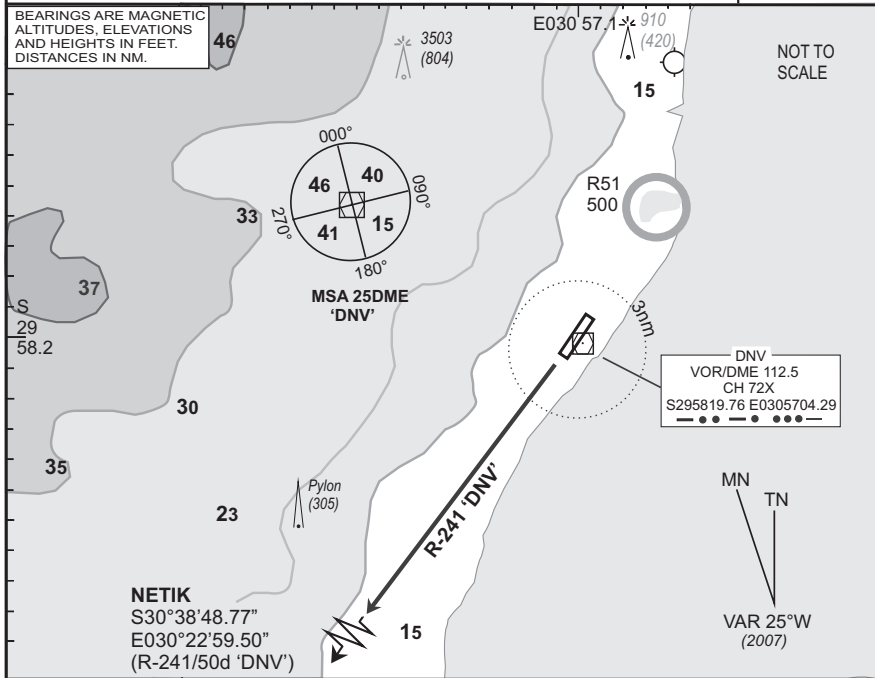
<b>Elev</b> 33	<b>T.alt</b> 5500 <b>T.lev</b> ATC	<b>Approach</b> 119.1	<b>Tower</b> 118.7	<b>ATIS</b> 127.0	<b>DEP-12</b>
-------------------	---------------------------------------	--------------------------	-----------------------	----------------------	---------------

**FADN**

1. At 2000 FT ALT contact DURBAN Radar (APP) on frequency provided in ATC clearance.
2. Only aircraft equipped to comply with Part 91.34 RoA may accept procedures overflying the ocean.
3. If unable to comply with procedure, notify ATC.

**EFF**  
**05 Jul 07**

BEARINGS ARE MAGNETIC  
ALTITUDES, ELEVATIONS  
AND HEIGHTS IN FEET.  
DISTANCES IN NM.



<b>SID</b>	<b>RWY</b>	<b>Routing (including Min Noise Routing)</b>
------------	------------	--

NETIK 1D	24	Climb to FL070, maintain RWY track to 3DME 'DNV' thereafter R-241 'DNV' (outbound) to NETIK. Further climb will be under radar control. At NETIK set course as per flight plan.
----------	----	---

Comm Fail (Squawk 7600)		Comply with the NETIK 1D SID, maintain last assigned level. Passing 25DME 'DNV' climb to flight plan level. At NETIK set course as per flight plan.  Aircraft wishing to return must continue to the SID termination point and climb to last assigned level or MSA, if last cleared level is below MSA. At NETIK proceed to EPNAK and comply with the EPNAK 1B STAR Communication Failure procedure.
-------------------------	--	--

© AV/DIRECT / 140307

CAA South Africa