

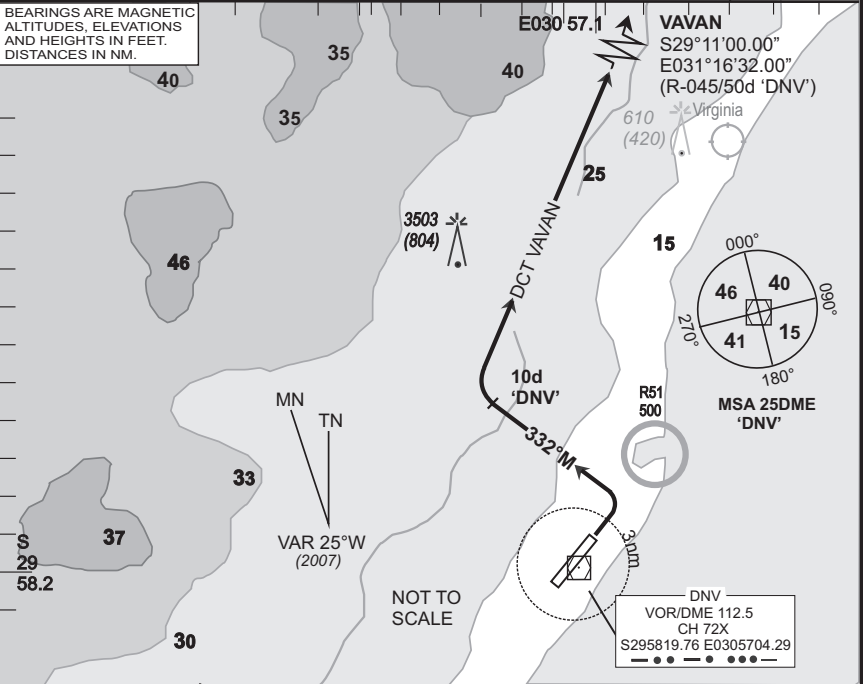
**STANDARD  
DEPARTURE CHART  
INSTRUMENT (SID)**

**DURBAN INTL  
RWY 06  
VAVAN 1C**

Elev 33	T.alt 5500 T.lev ATC	Approach 119.1	Tower 118.7	ATIS 127.0	DEP-07
------------	-------------------------	-------------------	----------------	---------------	--------

**FADN**

1. At 2000 FT ALT contact DURBAN Radar (APP) on the frequency provided in the ATC clearance.
  2. Only aircraft equipped to comply with Part 91-34 RoA may accept procedures overflying the ocean.
  3. If unable to comply with procedure, notify ATC.
- EFF  
05 Jul 07**



© AV/DIRECT / 130307

SID	RWY	Routing (including Min Noise Routing)	ALTITUDES
VAVAN 1C	06	Climb to FL070, maintain RWY track to 3DME 'DNV', then turn left to track 332°M to 10DME 'DNV'. At 10DME 'DNV' turn right direct to VAVAN. Further climb will be under radar control. At VAVAN set course as per flight plan.	
Comm Fail (Squawk 7600)		<p>Comply with the VAVAN 1C SID, maintain last assigned level. Passing 30DME 'DNV' climb to flight plan level. At VAVAN set course as per flight plan.</p> <p>Aircraft wishing to return must continue to the SID termination point and climb to last assigned level or MSA, if last cleared level is below MSA. At VAVAN comply with the VAVAN 1A STAR Communication Failure procedure.</p> <p>Restricted to 210KIAS (or less) and a minimum of 4.5% climb gradient until crossing R-004 'DNV' in order to remain clear of FAVG ATZ.                      4.5% @ 140KTAS = 638ft/min                      4.5% @ 180KTAS = 820ft/min                      4.5% @ 220KTAS = 1003ft/min</p>	

CAA South Africa