

**INSTRUMENT  
APPROACH  
CHART**

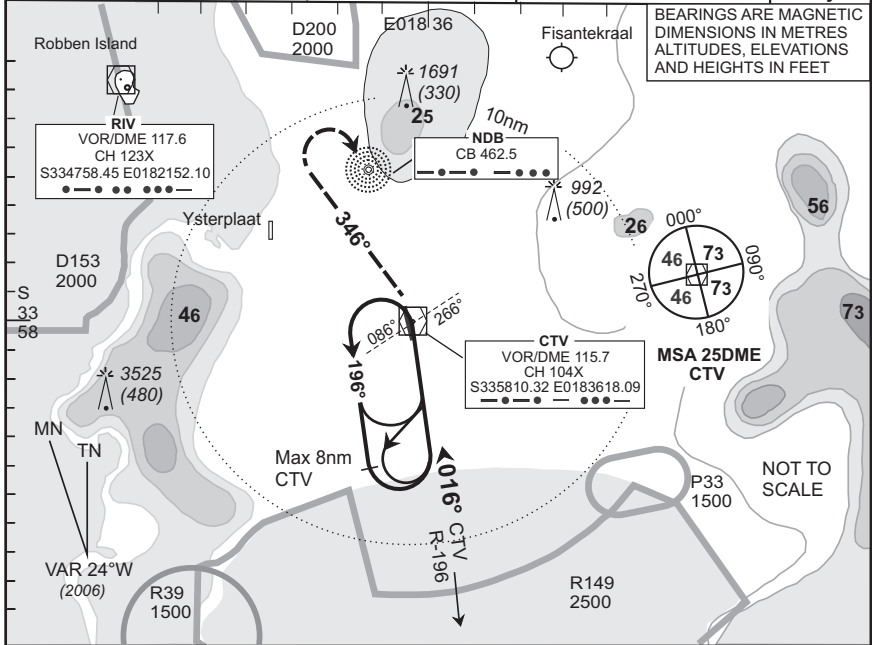
**AERODROME ELEV 151  
HEIGHTS RELATED TO  
THR RWY 01 - ELEV 144**

(CAT A - D)

**CAPE TOWN INTL  
VOR Y Rwy 01**

<b>CAPE TOWN Approach 119.7</b>	<b>Tower 118.1</b>	<b>ATIS 127.0</b>	<b>VOR-03 EFF 10 May 07</b>
-------------------------------------	------------------------	-----------------------	-------------------------------------

FACT



<b>CTV</b>	<b>T.Lev</b>	<b>ATC</b>
6500	196°	016°
6360		
3000	016°	
2860	196°	
	016°	
	2000	
	1860	

Left on CTV R-346 to 6500 6360 then right to CTV.

MAP at CTV



- Initial approach altitude **6500** or higher MSA. Descend in the hold to **3000**.
- Procedure turn approach applicable only within 30° of the outbound heading. Use phraseology "Request procedure turn approach".
- RoD computes at 2.5° angle of descent.
- Circling approaches between 010°M and 160°M are not authorised for Cat C & D aircraft.
- Circle to land at the discretion of the pilot in command.

OCA/H					8nm - THR						
Cat of ACFT	A	B	C	D	Speed	Kt	80	100	120	140	160
Straight	633(489)	633(489)	633(489)	633(489)	Time	M:s					
-in					Rate of Descent	Fpm	350	440	530	620	700
Approach	N/A										
Circling					Advisory Alt/Hgt						
Rev: New Format.											WGS-84