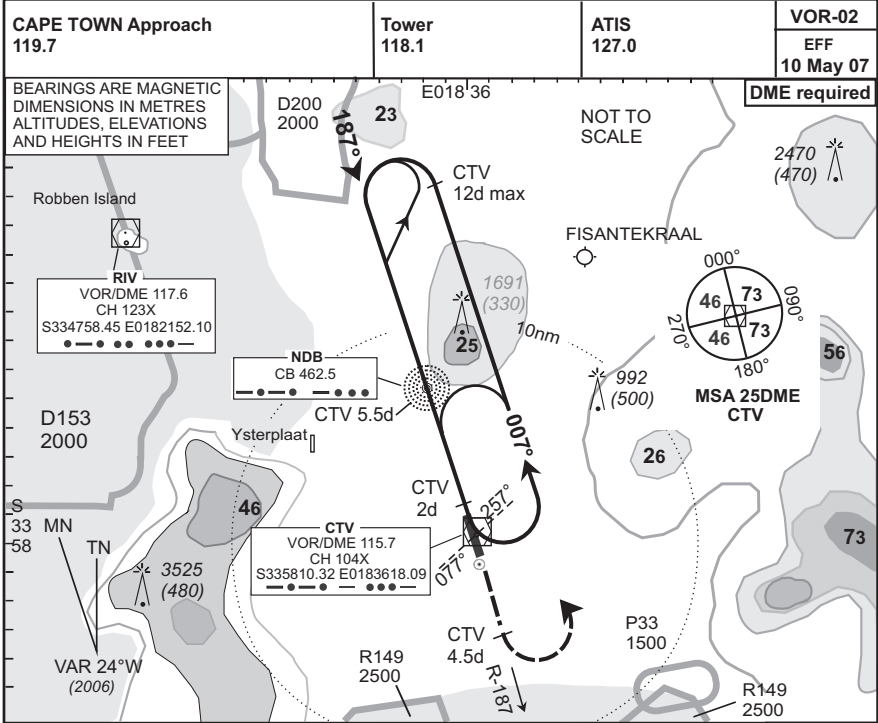


INSTRUMENT APPROACH CHART
AERODROME ELEV 151
HEIGHTS RELATED TO THR RWY 19 - ELEV 147

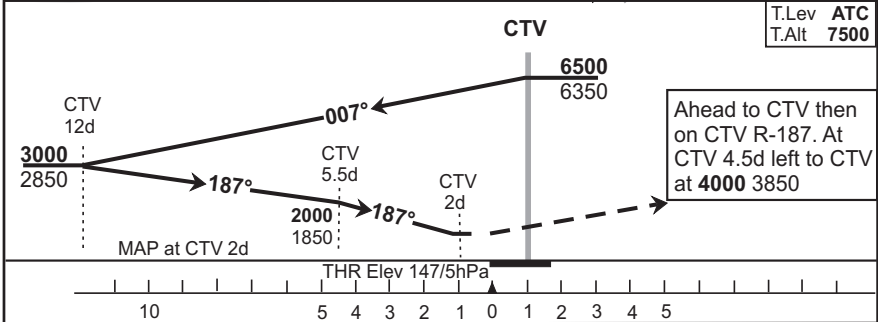
(Cat A - D)

CAPE TOWN INTL
VOR Rwy 19

FACT



© AVDIRECT / 291206



1. Initial approach altitude **6500** or higher MSA. Descend in the hold to **6500**.
2. Procedure turn approach applicable only within 30° of the outbound heading. Use phraseology "Request procedure turn approach".
3. Rod from CTV 5.5d computes at 3.5° angle of descent.
4. **Caution:** High ground and obstructions along eastern boundary of the final approach area.
5. Circling approaches between 010°M and 160°M are not authorised for Cat C & D aircraft.
6. Circle to land at the discretion of the pilot in command.

OCA/H					5.5d CTV - THR						
Cat of ACFT	A	B	C	D	Speed	Kt	80	100	120	140	160
Straight	546(399)	546(399)	546(399)	546(399)	Time	M:s	3:40	2:56	2:27	2:06	1:50
-in					Rate of Descent	Fpm	490	620	740	870	990
Approach	N/A				5.5d CTV to THR	5.5d	5d	4d	3d		
Circling					Advisory Alt/Hgt	2000(1850)	1810(1660)	1440(1290)	1070(920)		
Rev: New Format.											WGS-84

CAA South Africa