

**INSTRUMENT APPROACH CHART**      **AERODROME ELEV 151 HEIGHTS RELATED TO THR RWY 01 - ELEV 144**

(CAT A - D)

**CAPE TOWN INTL**  
**VOR Z Rwy 01**

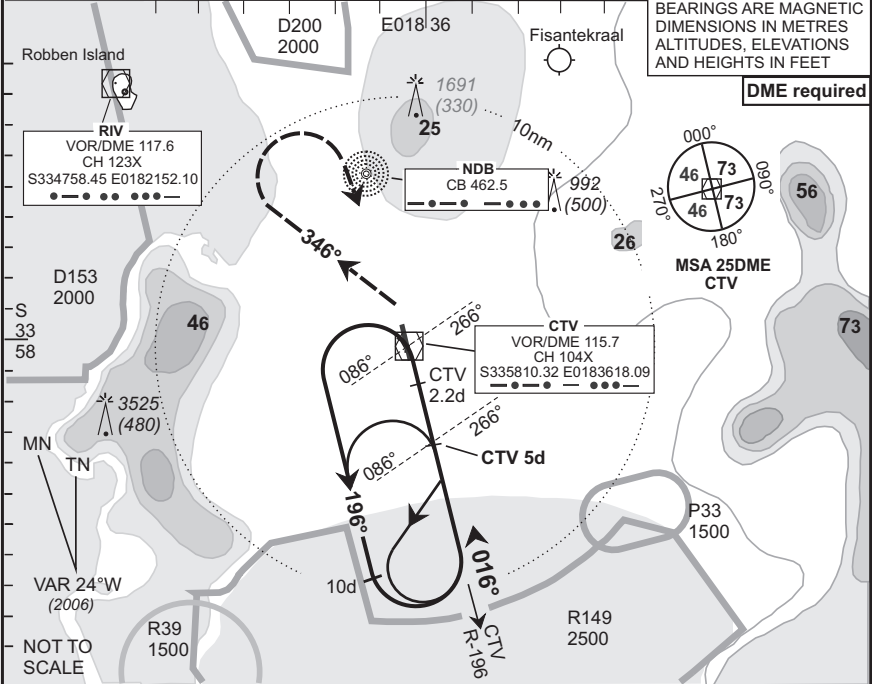
<b>CAPE TOWN Approach</b> 119.7	<b>Tower</b> 118.1	<b>ATIS</b> 127.0	<b>VOR-01</b> EFF 10 May 07
------------------------------------	-----------------------	----------------------	-----------------------------------

BEARINGS ARE MAGNETIC  
DIMENSIONS IN METRES  
ALTITUDES, ELEVATIONS  
AND HEIGHTS IN FEET

**DME required**

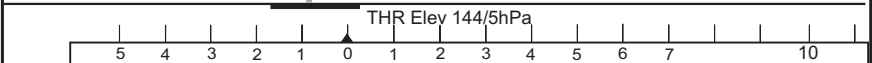
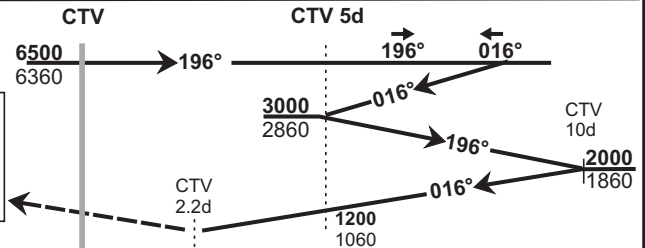
FACT

© AV DIRECT / 291206



T.Lev	<b>ATC</b>
T.Alt	<b>7500</b>

Ahead to CTV climbing to **6500 6360**. At CTV left on CTV R-346. At **6500 6360** right to CTV and via R-196 to CTV 5d



1. Initial approach altitude **6500** or higher MSA. Descend in the hold to **3000**.
2. Procedure turn approach applicable only within 30° of the outbound heading. Use phraseology "Request procedure turn approach".
3. RoD computes at 1.9° angle of descent.
4. Circling approaches between 010°M and 160°M are not authorised for Cat C & D aircraft.
5. Circle to land at the discretion of the pilot in command.

OCA/H					5d CTV - THR						
Cat of ACFT	A	B	C	D	Speed	Kt	80	100	120	140	160
Straight	523(379)	523(378)	523(379)	523(379)	Time	M:s	2:56	2:20	1:57	1:40	1:28
-in					Rate of Descent	Fpm	270	330	400	470	540
Approach	N/A				5d CTV to THR	5d	4d	3d			
Circling					Advisory Alt/Hgt	1200(1060)	940(800)	670(530)			

Rev: New Format.

WGS-84