

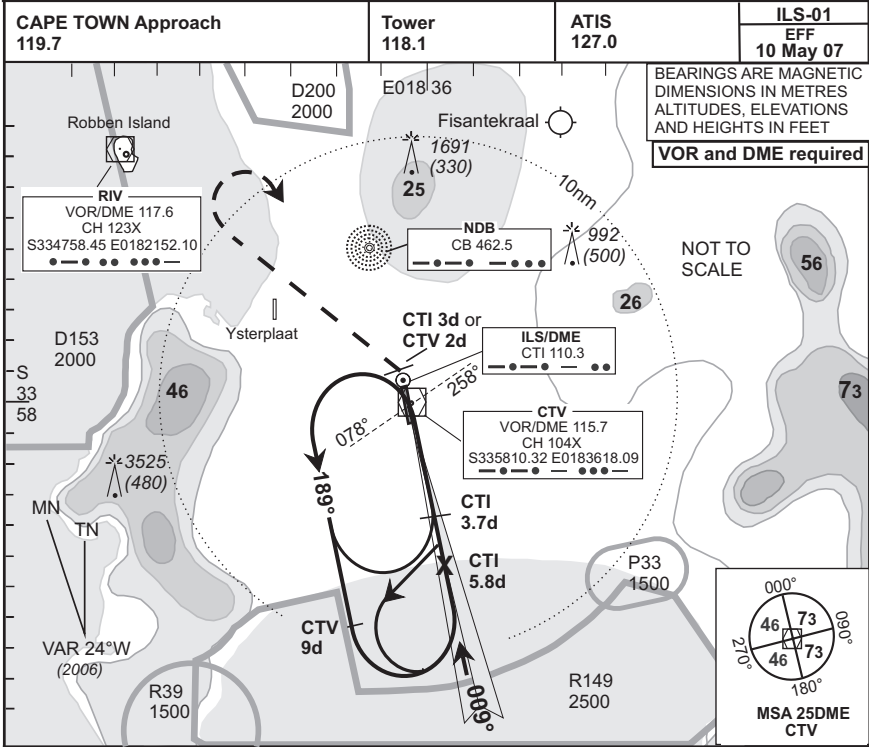
INSTRUMENT APPROACH CHART

**AERODROME ELEV 151
HEIGHTS RELATED TO
THR RWY 01-ELEV 144**

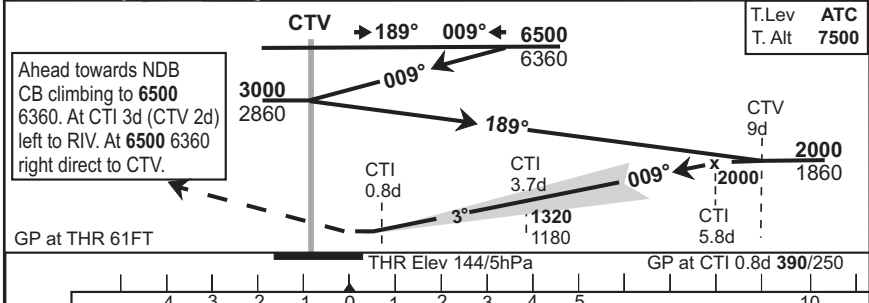
**CAPE TOWN INTL
ILS Rwy 01**

(Cat A - D)

FACT



© AV DIRECT / 271206



1. Initial approach altitude **6500** or higher MSA.
2. Descend in the hold to **3000**.
3. Procedure turn approach applicable only within 30° of the outbound heading. Use phraseology "Request procedure turn approach".
4. Circling approach between 010°M & 160°M are not authorised for Cat C & D aircraft.
5. ILS/DME "CTI" indicates 0.2d at THR 01.
6. Cat 11 & 111B operation must be approved by CAA.
7. Circle to land at the discretion of the pilot in command.

Cat of ACFT	OCA/H				Speed	OM - THR						
	A	B	C	D		Kt	80	100	120	140	160	
Straight	Cat 1	279(135)	287(143)	296(152)	305(161)	M:s	4:12	3:22	2:48	2:24	2:06	
-in	Cat 11	192(48)	203(59)	216(72)	229(85)	Rate of Descent	Fpm	420	530	640	740	850
Approach	GP INOP					CTI GP/DME	5.8d	3.7d	0.8d			
Circling						GP Altitude	2000(1860)	1320(1180)	390(250)			

Rev: New Format.

WGS-84

CAA South Africa