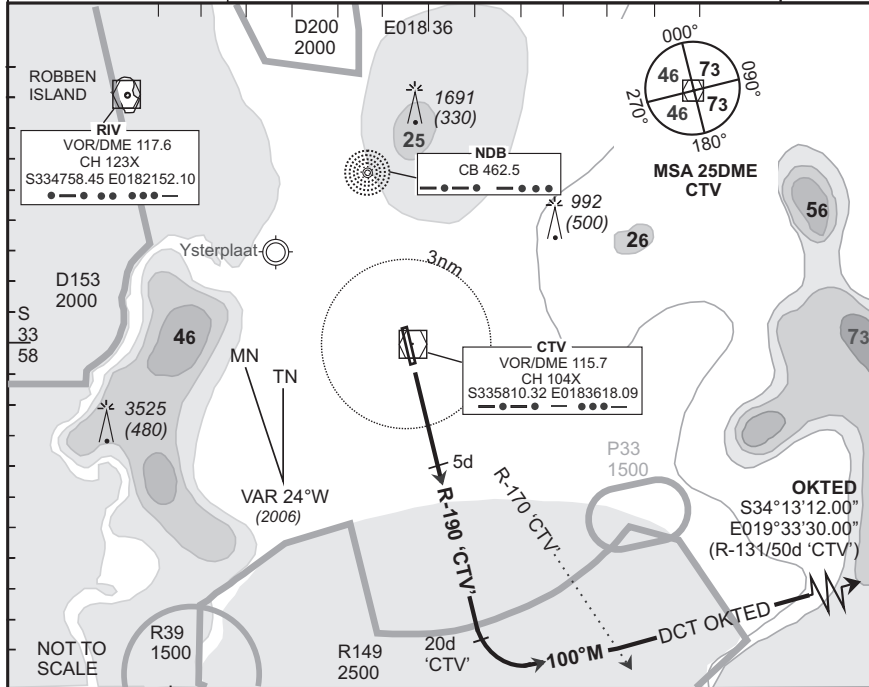


**STANDARD  
DEPARTURE CHART  
INSTRUMENT (SID)**

**CAPE TOWN INTL  
RWY 19  
OKTED 1C**

Elev 151	T.alt 7500 T.llev ATC	Approach 119.7	Tower 118.1	ATIS 127.0		DEP-10 EFF 10 May 07
BEARINGS ARE MAGNETIC DIMENSIONS IN METRES ALTITUDES, ELEVATIONS AND HEIGHTS IN FEET. DISTANCES IN NM.		1. At 2000 FT ALT contact Cape Town Radar (App) on the frequency provided. 2. Cross CTR boundary at or above 2500 FT ALT. 3. In unable to comply with SID notify ATC.				

FACT



© AV/DIRECT / 050107

SID	RWY	Routing (including Min Noise Routing)
OKTED 1C	19	Climb to FL090, maintain RWY track to 5DME 'CTV', then adjust onto R-190 'CTV' (outbound). Passing 20DME 'CTV' turn left to track 100°M. Crossing R-170 'CTV' direct OKTED. Further climb will be under radar control. At OKTED set course as per flight plan.
Comm Fail (Squawk 7600)		Comply with the OKTED 1C SID, maintain last assigned level. At OKTED continue as per flight plan and climb to flight plan level.  Aircraft wishing to return must continue to the SID termination point and then route direct NDB 'GE' and comply with the appropriate STAR Communication Failure procedure.
		Procedure restricted to a minimum climb gradient of 4.6% until passing 5700 FT ALT due to terrain. Do not cross (north of) R-140 'CTV' below 8500 FT ALT. 4.6% @ 140KTAS = 652ft/min 4.6% @ 180KTAS = 838ft/min 4.6% @ 220KTAS = 1024ft/min

C-AA South Africa