

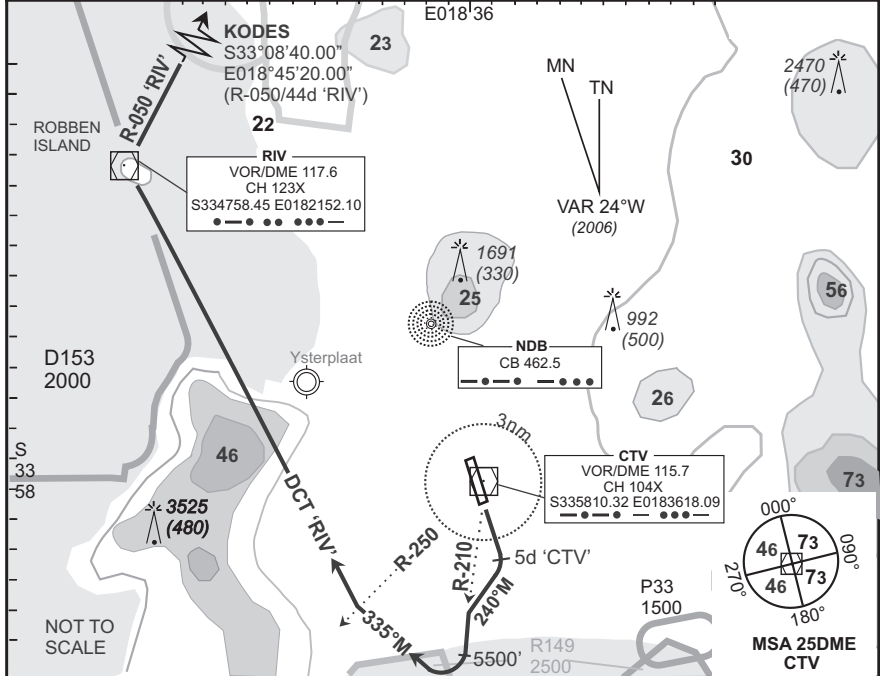
STANDARD DEPARTURE CHART INSTRUMENT (SID)

CAPE TOWN INTL RWY 19 KODES 1B

Elev 151	T.alt 7500 T.leve ATC	Approach 119.7	Tower 118.1	ATIS 127.0	DEP-07
----------	--------------------------	----------------	-------------	------------	--------

FACT

BEARINGS ARE MAGNETIC DIMENSIONS IN METRES ALTITUDES, ELEVATIONS AND HEIGHTS IN FEET. DISTANCES IN NM.	1. At 2000 FT ALT contact Cape Town Radar (App) on the frequency provided. 2. Cross CTR boundary at or above 2500 FT ALT. 3. In unable to comply with SID notify ATC.	EFF 10 May 07
--	---	------------------



SID	RWY	Routeing (including Min Noise Routeing)
KODES 1B	19	Climb to FL090, track RWY heading to 5DME 'CTV', then turn right to track 240°M to intercept R-210 'CTV' (outbound). Passing 5500 FT ALT turn right to track 335°M. Crossing R-250 'CTV' turn right direct 'RIV'. At 'RIV' intercept R-050 'RIV' outbound direct KODES. Further climb will be under radar control. At KODES set course as per flight plan.

Comm Fail (Squawk 7600)		Comply with the KODES 1B SID, maintain last assigned level. Passing 30DME 'CTV' climb to flight plan level. At KODES continue as per flight plan. Aircraft wishing to return must continue to the SID termination point at FL090, then proceed to 'WY' and comply with the appropriate WOLSELEY STAR Communication Failure procedure.
-------------------------	--	---

© AV/DIRECT / 050107

CAA South Africa