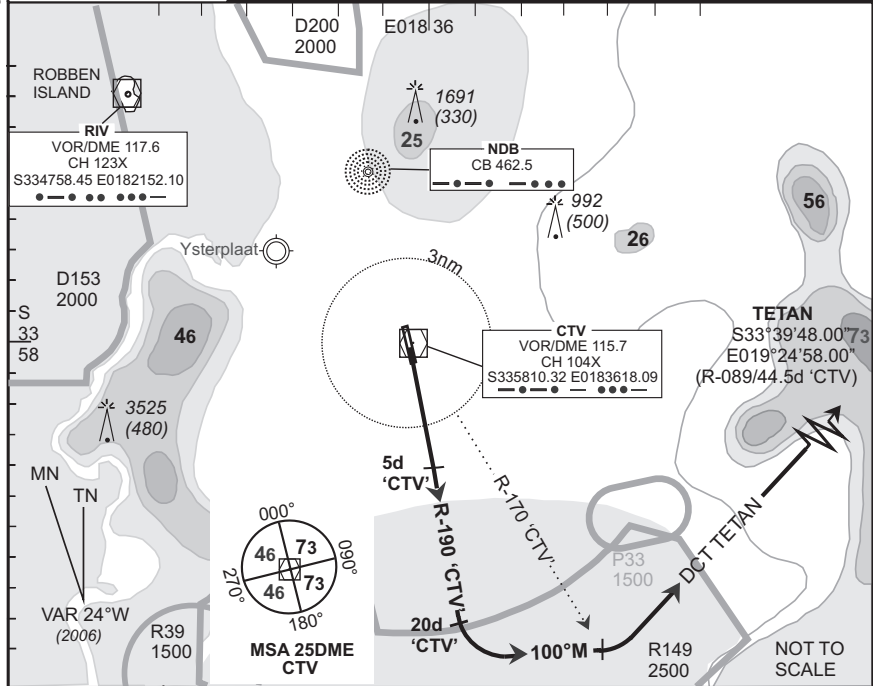


**STANDARD
DEPARTURE CHART
INSTRUMENT (SID)**

**CAPE TOWN INTL
RWY 19
TETAN 1B**

Elev 151	T.alt 7500 T.llev ATC	Approach 119.7	Tower 118.1	ATIS 127.0		DEP-06
BEARINGS ARE MAGNETIC DIMENSIONS IN METRES ALTITUDES, ELEVATIONS AND HEIGHTS IN FEET. DISTANCES IN NM.						1. At 2000 FT ALT contact Cape Town Radar (App) on the frequency provided. 2. Cross CTR boundary at or above 2500 FT ALT. 3. In unable to comply with SID notify ATC.
						EFF 10 May 07

FACT



© AV/DIRECT / 050107

SID	RWY	Routing (including Min Noise Routing)
TETAN 1B	19	Climb to FL090, maintain RWY track to 5DME 'CTV' then adjust onto R-190 'CTV' (outbound). Passing 20DME 'CTV' turn left to track 100°M. Crossing R-170 'CTV' turn left direct TETAN. Further climb will be under radar control. At TETAN set course as per flight plan.
Comm Fail (Squawk 7600)		Comply with the TETAN 1B SID and maintain lat assigned level. Crossing R-105 'CTV' climb to flight plan level. At TETAN continue as per flight plan. Aircraft wishing to return must continue to the SID termination point and then route direct to 'WY' NDB and comply with the appropriate WOLSELEY STAR Communication Failure procedure. Procedure restricted to a minimum climb gradient of 4.6% until passing 5700 FT ALT, due to terrain. Do not cross (north of) R-140 'CTV' below 8500 FT ALT. 4.6% @ 140KTAS = 652ft/min 4.6% @ 180KTAS = 838ft/min 4.6% @ 220KTAS = 1024ft/min

CAA South Africa