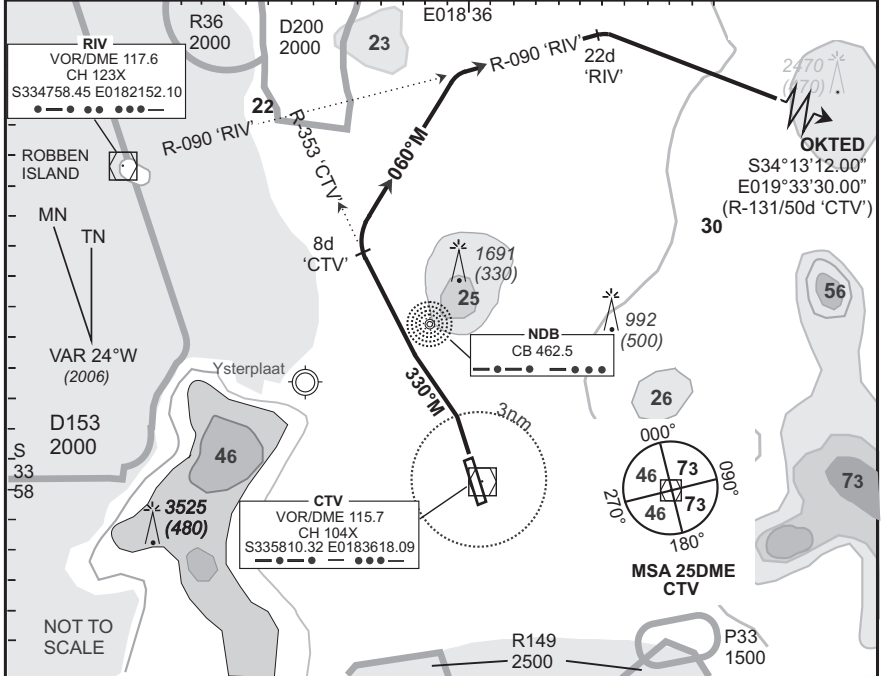


**STANDARD
DEPARTURE CHART
INSTRUMENT (SID)**

**CAPE TOWN INTL
RWY 01
OKTED 1A**

Elev 151	T. alt 7500 T. lev ATC	Approach 119.7	Tower 118.1	ATIS 127.0	DEP-04
BEARINGS ARE MAGNETIC DIMENSIONS IN METRES ALTITUDES, ELEVATIONS AND HEIGHTS IN FEET. DISTANCES IN NM.					EFF 10 May 07
1. At 2000 FT ALT contact Cape Town Radar (App) on the frequency provided. 2. Cross CTR boundary at or above 2500 FT ALT. 3. In unable to comply with SID notify ATC.					

FACT



SID	RWY	Routeing (including Min Noise Routeing)
OKTED 1A	01	Climb to FL090, maintain RWY track to 3DME 'CTV', then turn left 330°M to intercept R-354 'CTV' (outbound). Passing 8DME 'CTV' turn right to track 060°M to intercept R-090 'RIV' (outbound). Passing 22DME 'RIV' on R-090 'RIV', turn right direct OKTED. Further climb will be under radar control. At OKTED set course as per flight plan.
Comm Fail (Squawk 7600)		Comply with the OKTED 1A SID, maintain last assigned level, or climb to MSA if below FL090. At OKTED continue as per flight plan and climb to flight plan level. Aircraft wishing to return must continue to the SID termination point at FL090, then proceed to NDB 'GE' and comply with the appropriate GREYTON STAR Communication Failure procedure.