

STANDARD DEPARTURE CHART INSTRUMENT (SID)

CAPE TOWN INTL RWY 01 TETAN 1C

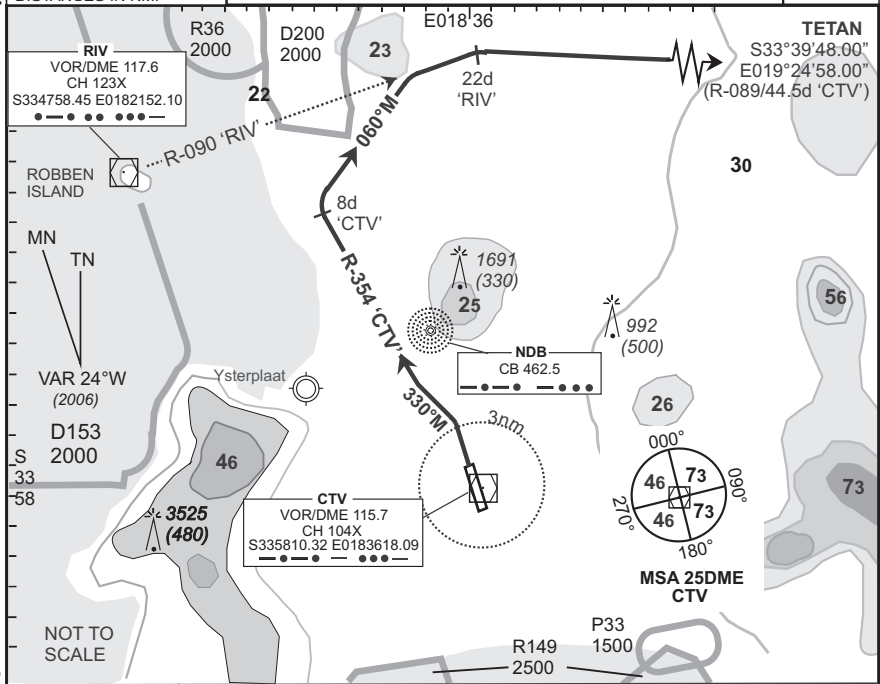
Elev 151	T.alt 7500 T.lev ATC	Approach 119.7	Tower 118.1	ATIS 127.0	DEP-01
----------	-------------------------	----------------	-------------	------------	--------

FACT

BEARINGS ARE MAGNETIC DIMENSIONS IN METRES ALTITUDES, ELEVATIONS AND HEIGHTS IN FEET. DISTANCES IN NM.

- At 2000 FT ALT contact Cape Town Radar (App) on the frequency provided.
- Cross CTR boundary at or above 2500 FT ALT.
- In unable to comply with SID notify ATC.

EFF 10 May 07



SID	RWY	Routing (including Min Noise Routing)
TETAN 1C	01	Climb to FL 090, track RWY heading to 3DME 'CTV', then turn left to track 330°M to intercept R-354 'CTV' (outbound). Passing 8DME 'CTV' turn right to track 060°M to intercept R-090 'RIV' (outbound), passing 22DME 'RIV' turn right direct TETAN. Further climb will be under radar control. At TETAN set course as per flight plan.

Comm Fail (Squawk 7600)

Comply with the TETAN 1C SID, maintain last assigned level. Passing 30DME 'CTV' climb to flight plan level. At TETAN continue as per flight plan.

Aircraft wishing to return must continue to the SID termination point at FL 090, then proceed to 'GE' NDB and comply with the appropriate GREYTON STAR Communication Failure procedure.

© AV/DIRECT / 060107

CAA South Africa