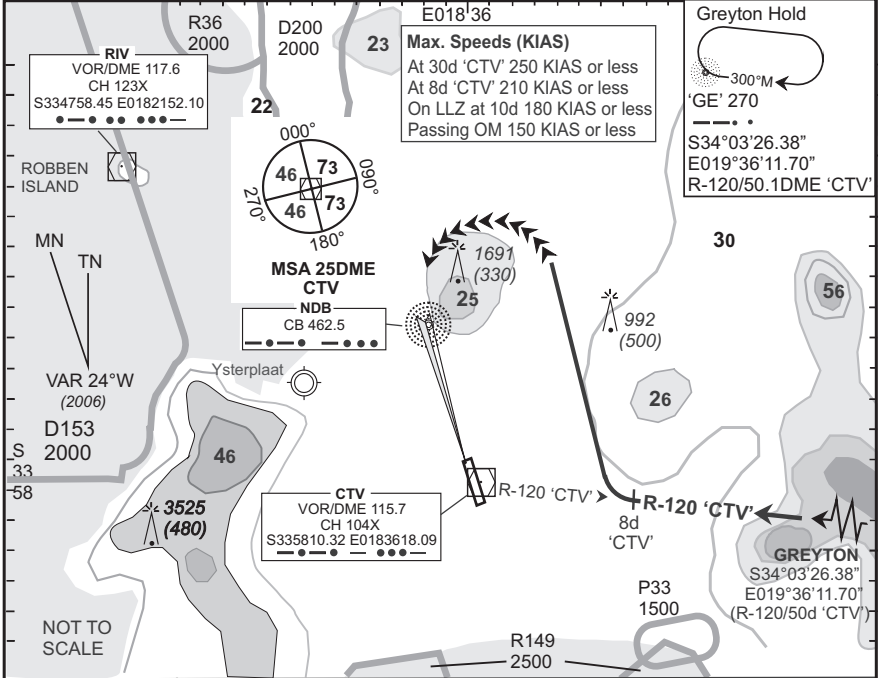


**STANDARD
ARRIVAL CHART
INSTRUMENT (STAR)**

**CAPE TOWN INTL
RWY 19
GREYTON 3A**

Elev 151	T.alt 7500 T.lev ATC	Approach 119.7	Tower 118.1	ATIS 127.0	ARR-07
BEARINGS ARE MAGNETIC DIMENSIONS IN METRES ALTITUDES, ELEVATIONS AND HEIGHTS IN FEET. DISTANCES IN NM.					EFF 10 May 07
1. SIDS and STARS must be announced in operation on ATIS 2. SIDS and STARS will only be in force when Surveillance Radar is in operation 3. If unable to comply with SID or STAR, notify ATC					

FACT



© AV/DIRECT / 0401/07

STAR	RWY	Routing (including Min Noise Routing)
GE 3A	19	Leave 'GE' NDB on R-120 'CTV'. Passing 8DME 'CTV' turn right to track 010°M for radar vectoring onto the ILS RWY 19.
Comm fail (Squawk 7600)		<p>Before 'GE' NDB Proceed to 'GE' NDB and enter the 'GE' NDB hold. Hold at last assigned level for minimum 5 minutes, then climb/descend to FL 100. Leave 'GE' NDB at FL 100 and continue on the after 'GE' NDB Communications Failure procedure.</p> <p>After 'GE' NDB. Continue on the routing for the GREYTON 3A STAR, maintain last assigned level. Crossing R-035 'CTV' on track 010°M turn left direct to 'CTV', then descend to 6500 FT ALT. On reaching 'CTV' complete the VOR/DME/ILS approach and land RWY 19.</p> <p>Communication Failure Procedure for STAR: In the event of a missed approach with the intention of diverting to an alternate aerodrome, proceed as follows: To the east: TETAN ONE BRAVO SID. To the south-east: OKTED ONE BRAVO SID. To the north and north-west: KODES ONE BRAVO SID.</p>

CAA South Africa