

**STANDARD  
ARRIVAL CHART  
INSTRUMENT (STAR)**

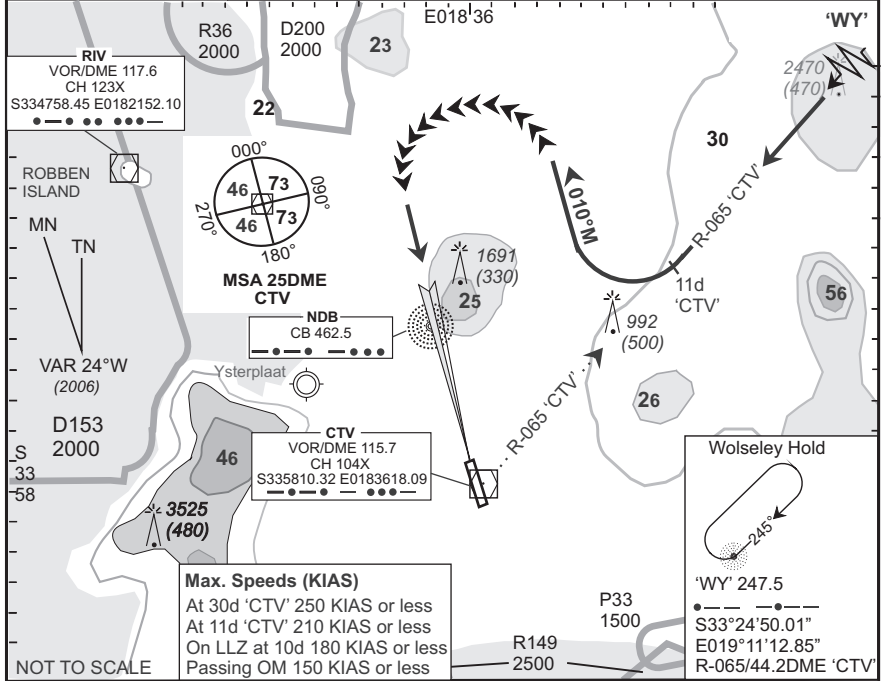
**CAPE TOWN INTL**

**RWY 19**

**WOLSELEY 4D**

<b>Elev 151</b>	<b>T.alt 7500 T.liev ATC</b>	<b>Approach 119.7</b>	<b>Tower 118.1</b>	<b>ATIS 127.0</b>	<b>ARR-06</b>
<b>BEARINGS ARE MAGNETIC DIMENSIONS IN METRES ALTITUDES, ELEVATIONS AND HEIGHTS IN FEET. DISTANCES IN NM.</b>		1. SIDS and STARS must be announced in operation on ATIS 2. SIDS and STARS will only be in force when Surveillance Radar is in operation 3. If unable to comply with SID or STAR, notify ATC			<b>EFF 10 May 07</b>

**FACT**



<b>STAR</b>	<b>RWY</b>	<b>Routing (including Min Noise Routing)</b>
WY 4D	19	Leave 'WY' NDB on R-065 'CTV' inbound. Passing 11DME 'CTV' turn right to track 010°M for radar vectoring onto the ILS RWY 19.

Comm Fail (Squawk 7600)	<p><b>Before NDB 'WY'.</b> Proceed to 'WY' NDB and enter the 'WY' hold. Hold at last assigned level for minimum 5 minutes, then climb/descend to to FL100 in the hold. Leave 'WY' NDB at FL100 and continue on the <b>after NDB 'WY'</b> Communication Failure procedure.</p> <p><b>After NDB 'WY'.</b> Continue on the routing for the WOLSELEY 4D STAR and maintain last assigned level. Crossing R-035 'CTV' on track 010°M turn left direct 'CTV', then descend to 6500 FT ALT. On reaching 'CTV' complete the VOR/DME/ILS approach and land RWY 19.</p> <p><b>Communication Failure Procedure for STAR:</b>          In the event of a missed approach with the intention of diverting to an alternate aerodrome, proceed as follows:          To the east: TETAN ONE BRAVO SID.          To the south-east: OKTED ONE BRAVO SID.          To the north and north-west: KODES ONE BRAVO SID.</p>
-------------------------	---

CAA South Africa