

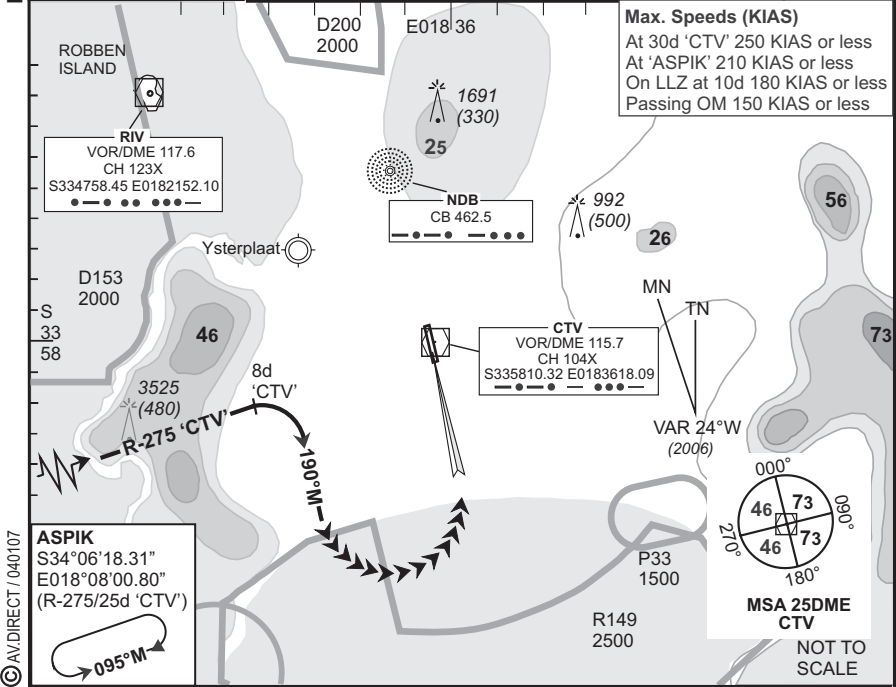
**STANDARD  
ARRIVAL CHART  
INSTRUMENT (STAR)**

**CAPE TOWN INTL  
RWY 01  
ASPIK 1A**

Elev 151	T.alt 7500 T.leve ATC	Approach 119.7	Tower 118.1	ATIS 127.0	ARR-04
-------------	--------------------------	-------------------	----------------	---------------	--------

FACT

BEARINGS ARE MAGNETIC DIMENSIONS IN METRES ALTITUDES, ELEVATIONS AND HEIGHTS IN FEET. DISTANCES IN NM.	1. SIDS and STARS must be announced in operation on ATIS 2. SIDS and STARS will only be in force when Surveillance Radar is in operation 3. If unable to comply with SID or STAR, notify ATC	EFF 10 May 07
--	--	------------------



© AV/DIRECT / 040107  
CAA South Africa

STAR	RWY	Routeing (including Min Noise Routeing)
ASPIK 1A	01	Leave ASPIK on R-275 'CTV' (inbound). Passing 8d 'CTV' turn right to track 190°M for radar vectoring onto the ILS RWY 01.
Comm Fail (Squawk 7600)		<p><b>Before ASPIK.</b> Proceed to ASPIK and enter the ASPIK hold. Hold at last assigned level for minimum 5 minutes, then descend to 6500 FT ALT in the hold. Leave ASPIK on the <b>after ASPIK</b> Communication Failure procedure.</p> <p><b>After ASPIK.</b> Continue on the routeing for the ASPIK 1A STAR and maintain 6500 FT ALT. Crossing R-225 'CTV' on track 190°M turn left direct 'CTV'. On reaching 'CTV' complete the VOR/DME/ILS approach and land RWY 01.</p> <p><b>Note:</b> Due to terrain, do not cross (east of) R-180 'CTV'.</p> <p><b>Communication Failure Procedure for STAR:</b> In the event of a missed approach with the intention of diverting to an alternate aerodrome, proceed as follows: To the east: follow routeing for the TETAN ONE CHARLIE SID. To the south-east: follow the routeing for the OKTED ONE ALFA SID. To the north: follow the routeing for the KODES ONE ALFA SID</p>
Rev: New Format.		WGS-84