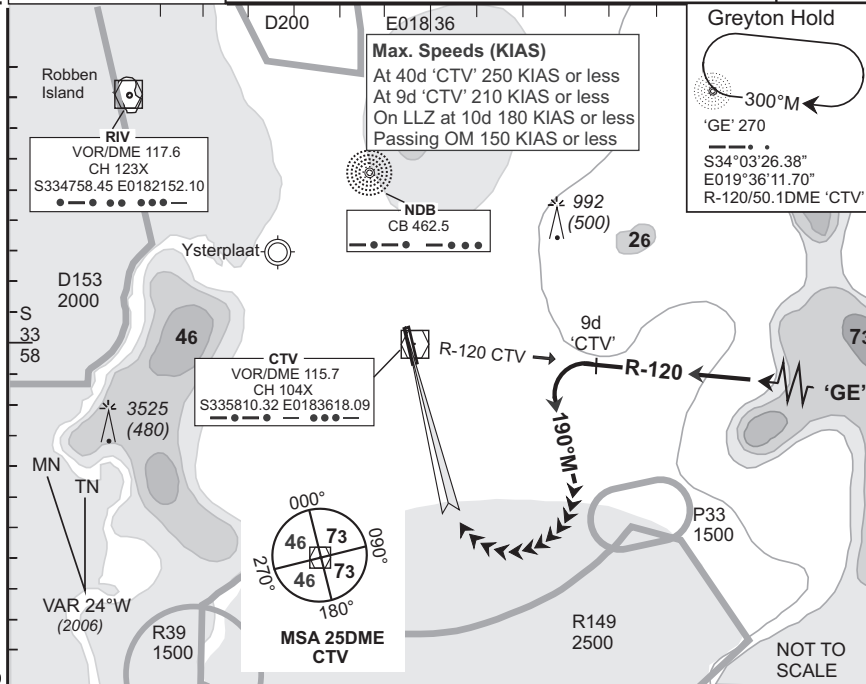


**STANDARD
ARRIVAL CHART
INSTRUMENT (STAR)**

**CAPE TOWN INTL
RWY 01
GREYTON 1D**

Elev 151	T.alt 7500 T.lev ATC	Approach 119.7	Tower 118.1	ATIS 127.0	ARR-02
BEARINGS ARE MAGNETIC DIMENSIONS IN METRES ALTITUDES, ELEVATIONS AND HEIGHTS IN FEET. DISTANCES IN NM.					EFF 10 May 07
1. SIDS and STARS must be announced in operation on ATIS 2. SIDS and STARS will only be in force when Surveillance Radar is in operation 3. If unable to comply with SID or STAR, notify ATC					

FACT



© AV.DIRECT / 1040107

STAR	RWY	Routing (including Min Noise Routing)
GE 1D	01	Leave 'GE' NDB on R-120 'CTV'. Passing 9DME 'CTV' turn left to track 190°M for radar vectoring onto the ILS RWY 01.
Comm Fail (Squawk 7600)		<p>Before NDB 'GE'. Proceed to and enter the 'GE' NDB hold. Hold at last assigned level for minimum 5 minutes, then climb/descend to FL100 in the hold. Leave 'GE' NDB at FL100 and continue on the after NDB 'GE' Communication Failure procedure.</p> <p>After NDB 'GE'. Continue on the routing for the GREYTON 1D STAR, maintain last assigned level. Crossing R-156 'CTV' on track 190°M turn right direct 'CTV' then descend to 6500 FT ALT. On reaching 'CTV' complete the VOR/DME/ILS approach and land RWY 01.</p> <p>Note 1: Due to terrain do not cross (west) R-210 'CTV'. Note 2: To avoid high ground, when established on track 190°M and below 5700 FT ALT, do not exceed 16DME 'CTV'.</p> <p>Communication Failure Procedure for STAR: In the event of a missed approach with the intention of diverting to an alternate aerodrome, proceed as follows: To the east: follow routing for the TETAN ONE CHARLIE SID. To the south-east: follow the routing for the OKTED ONE ALFA SID. To the north: follow the routing for the KODES ONE ALFA SID</p>

CAA South Africa