



New Rules on Hold Baggage

How do I comply?

(Effective from 1 January 2009)

Background

The South African Civil Aviation Authority, an entity tasked with regulating the civil aviation industry in South Africa, has through the Ministry of Transport promulgated a new regulation that reads as follows:

“As from 1 January 2009, the operator of a commercial air transport/ aeroplane engaged in a scheduled commercial air service shall not carry any originating hold baggage unless such baggage has been screened prior to being loaded into the aircraft.”



This is yet another Aviation Security measure adopted by RSA, in keeping with the international stance of strictly adhering to International Civil Aviation Organisation Standards and recommended practices.

Objective of the new regulation:

To detect and prevent objects that could harm or endanger aircraft, passengers and crew, from being loaded onboard an aircraft.

This regulation is now also applicable to domestic operations and specifically to **hold baggage** as well as **transfer baggage**.

Definition of Terms:

Hold baggage refers to luggage that is checked in and then carried onto an aircraft by designated airline / airport officials, but not accessible to passengers during the flight.



Transfer baggage refers to luggage handled by airline / airport officials between connecting flights.

What is expected from a passenger?

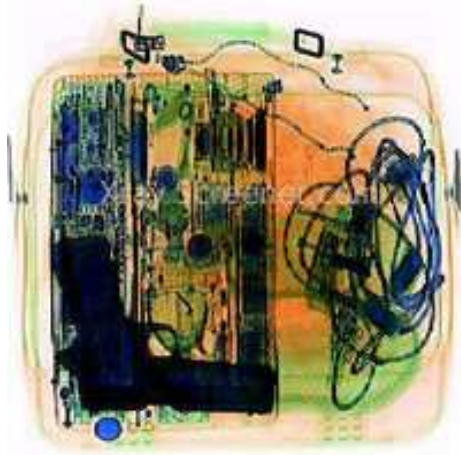
- Cooperate with check-in agents at all times;
- Honestly answer these security questions asked by check-in agents;

Is this your bag?

Did you pack it yourself?

Has it always been in your possession since you packed it?

Are you carrying anything on behalf of anybody else?



- Declare firearms and any potential harmful objects at the check-in counters;
- Always remember that hold baggage will not be accepted for carriage unless the relevant passenger is present during check-in;
- Ensure that there are no prohibited goods/items placed in your baggage;
- Take accountability for your own baggage and its contents;

- Do not accept someone else's baggage, the contents of which is unknown to you.
- Always familiarise yourself with the baggage questions posted at check-in counters to ensure the integrity of your baggage and its contents.

Procedures to be followed by the airport operator

The airline operator shall ensure that hold baggage is accepted only from ticketed passengers who have been issued with valid boarding passes.

The airline and airport operator are expected to ensure that all hold baggage is subjected to security screening prior to being placed on board an aircraft. The screening of hold baggage shall be carried out before, during and/or after check-in.

All baggage may only be carried on board the flight after it has been positively matched with the passenger, after he/she has been accepted for the flight.

Measures to be taken in case of non-conformance

Should questioning of the passenger during check-in or after check-in raise any doubts about

packing or supervision of the hold baggage, then it shall be subjected to additional security screening.

Hold baggage of a passenger who is denied boarding for security reasons, or for refusal to be screened or who has not boarded the aircraft, must be off-loaded. The same applies to a passenger who decides, for any reason whatsoever, to disembark after boarding.

Should a passenger be offloaded, so shall their checked-in baggage too.

Enquiries:

- Any enquiries or comments can be forwarded to civilavsec@caa.co.za
- You can also visit the SACAA website for future updates on the Hold Baggage System (HBS).

