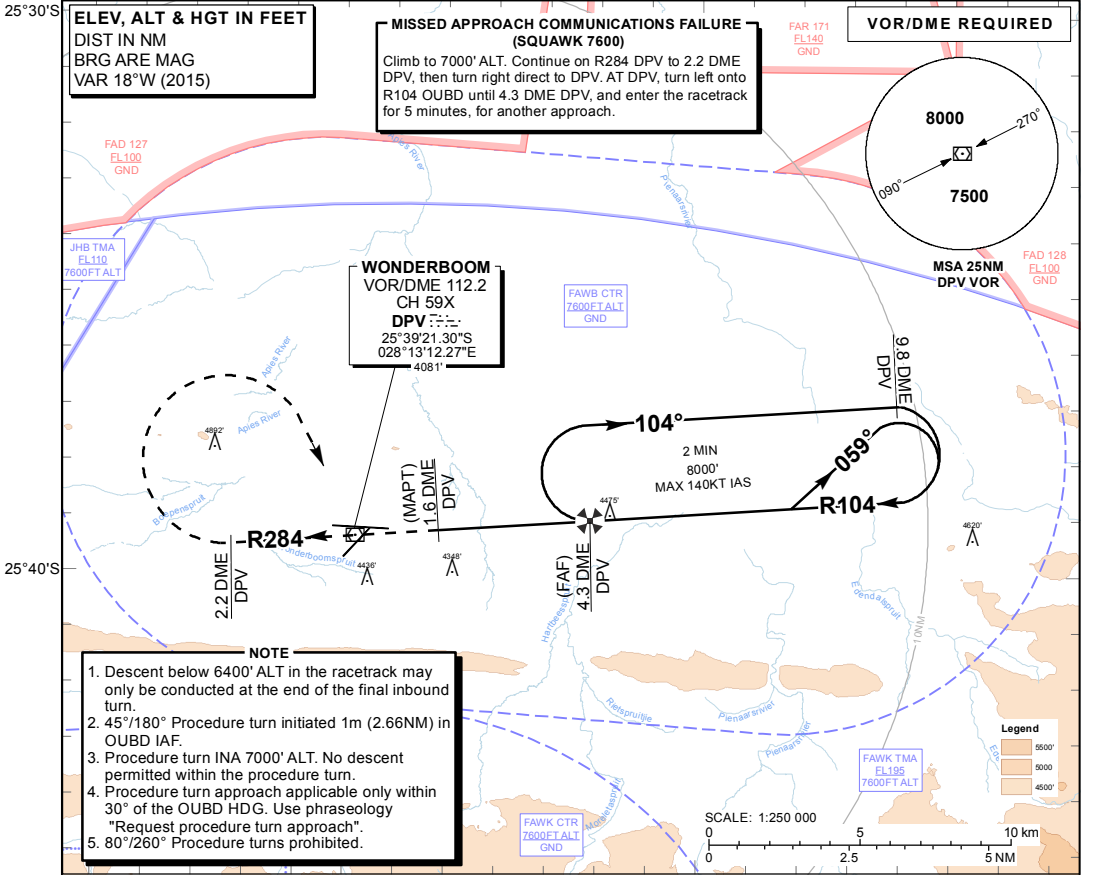


INSTRUMENT AERODROME ELEV 4095'
APPROACH HEIGHTS RELATED TO
CHART - ICAO THR RWY 29 - ELEV 4095'

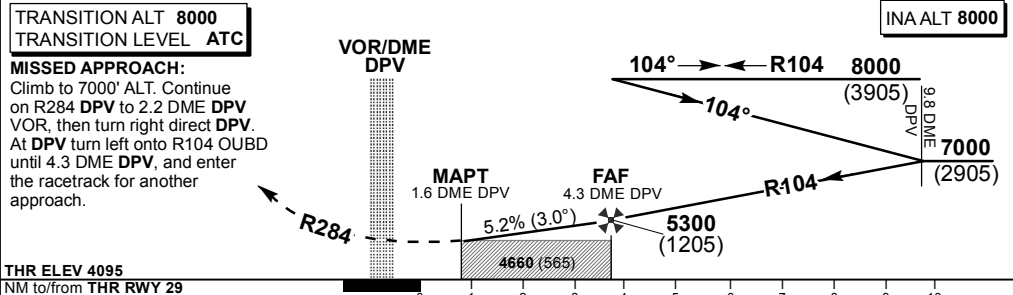
WONDERBOOM TWR: 118.35
 GND: 120.60

PRETORIA (WONDERBOOM)
VOR RWY 29
 CAT A - B



- NOTE**
1. Descent below 6400' ALT in the racetrack may only be conducted at the end of the final inbound turn.
 2. 45°/180° Procedure turn initiated 1m (2.66NM) in OUBD IAF.
 3. Procedure turn INA 7000' ALT. No descent permitted within the procedure turn.
 4. Procedure turn approach applicable only within 30° of the OUBD HDG. Use phraseology "Request procedure turn approach".
 5. 80°/260° Procedure turns prohibited.

Distance from THR 29	4.3	4	3	2	1	
ADVISORY ALT (HGT)	5300 (1205)	5210 (1115)	4900 (805)	4590 (495)	4280 (185)	



THR ELEV 4095 NM to/from THR RWY 29		0	1	2	3	4	5	6	7	8	9	10
Straight-in Approach	OCA (H)	A	B	GS								
	VOR/DME	4660 (565)	4660 (565)	FAF to THR	KT	80	100	120	140	160	180	
	RVR	1500m	1500m	M:S	2:46	2:13	1:51	1:35	1:23	1:14		
Circling	ALS OUT	1500m	1500m	Rate of descent (5.2%)	FPM	415	519	623	727	831	935	
		4980 (885)	5260 (1165)	NOTE: 1. CAT A & B only. 2. MAPT before THR at 1.6 DME DPV. 3. Racetrack limited by 9.8 DME DPV. 4. No turns prior MAPT. 5. Circle to land at the discretion of the pilot in command.								

CHANGE: New Procedure