

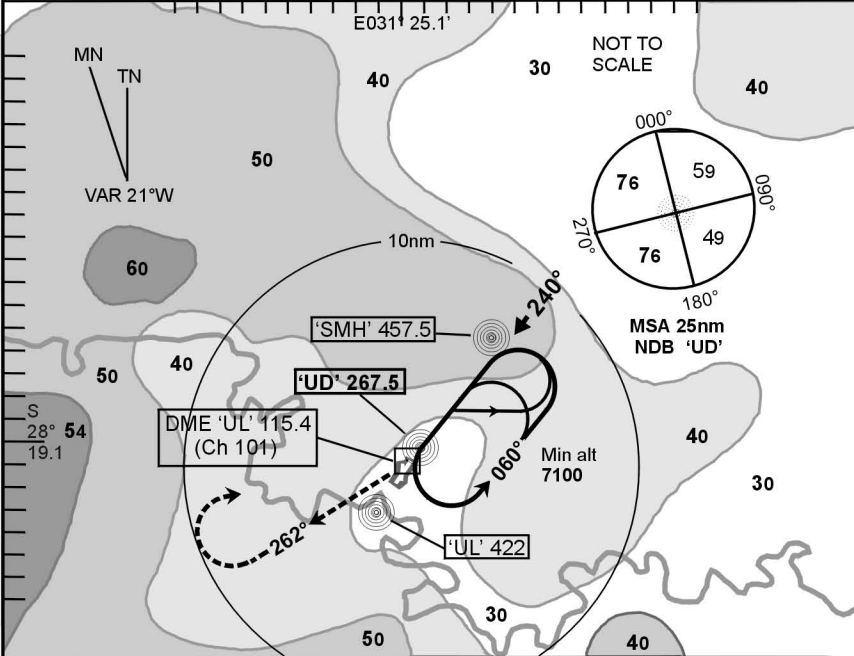
Elev 1720 OCH: 777

(PRINCE MANGOSUTHO BUTHELEZI) **ULUNDI**
(Cat A, B, C) **BREAKCLOUD NDB 23**

ULUNDI
124.8 (Common traffic advisory)

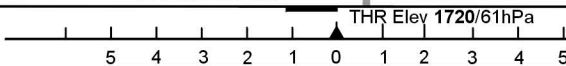
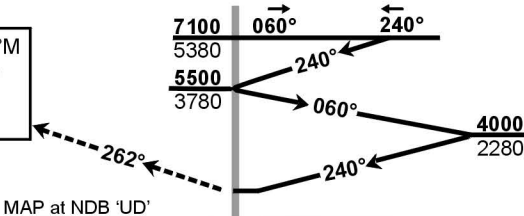
NDB-03
EFF
08 July 04

FAUL



UD

Right on Hdg 262°M to 4500 2780 then right to UD at 5500 3780



Abm 'UD'	T.Lev T.Alt		ATC 7100
	kt	fpm	
1:30	200		—
1:40	180		
1:53	160		
2:09	140		
2:30	120		
3:00	100		
3:45	80		

- This procedure is conducted outside controlled airspace, entirely at the discretion of the pilot in command.
- Initial approach altitude 7100 or higher MSA.
- Descend in the hold to 5500.
- Procedure turn approach applicable only within 30° of the outbound heading. Use phraseology 'Executing procedure turn approach'.
- Circle to land at the discretion of the pilot in command.
- RWY 20: Landing prohibited
RWY 02: Take-off prohibited.

G/S	Advisory Alt/Hgt		
	+20s	+40s	+60s
160 kt			
140			
120			
100			
80			

Rev: Topo clearance heights and MSA reviewed. Chart #.

WGS-84

© AV/DIRECT / 040204

CAA South Africa