

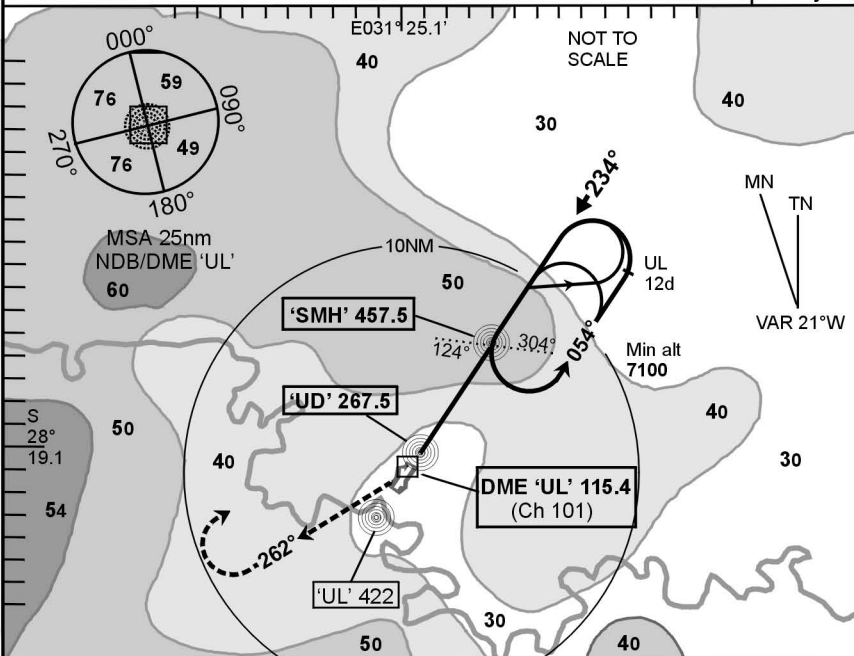
Elev 1720 OCH: 527

(PRINCE MANGOSUTHO BUTHELEZI) **ULUNDI**  
(Cat A, B, C) **BREAKCLOUD 2 NDB/DME 23**

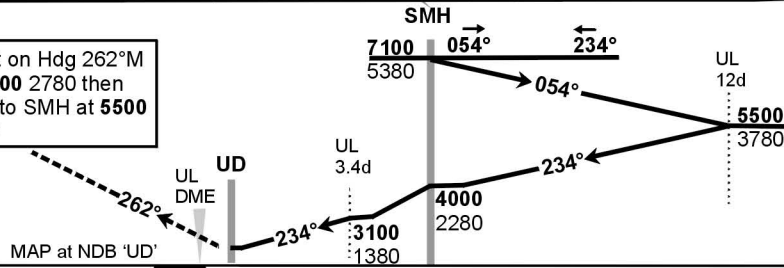
**ULUNDI**  
124.8 (Common traffic advisory)

NDB-02  
EFF  
08 July 04

FAUL



Right on Hdg 262°M to 4500 2780 then right to SMH at 5500 3780



MAP at NDB 'UD' THR Elev 1720/61hPa

T.Lev	ATC		
T.Alt	7100		
kt	fpm	3.4d	
200	1270	—	
180	1150	THR	
160	1020	1:16	
140	890	1:27	
120	760	1:42	
100	640	2:02	
80	510	2:33	

1. This procedure is conducted outside controlled airspace, entirely at the discretion of the pilot in command.
2. Initial approach altitude 7100 or higher MSA.
3. Procedure turn approach applicable only within 30° of the outbound heading. Use phraseology 'Executing procedure turn approach'.
4. RoD from UL 3.4d computes at 3.6° angle of descent.
5. Circle to land at the discretion of the pilot in command.
6. RWY 20: Landing prohibited  
RWY 02: Take-off prohibited.

Advisory Alt/Hgt		
UL DME		
3.4d	3100	1380
3d	2950	1230
2d	2570	850

Rev: Topo clearance heights and MSA reviewed. Chart #.

WGS-84

© AVDIRECT / 040204

CAA South Africa