

Elev
1720

OCH: 877

(PRINCE MANGOSUTHO BUTHELEZI)
(Cat A, B, C) BREAKCLOUD 2 NDB/DME 05

ULUNDI

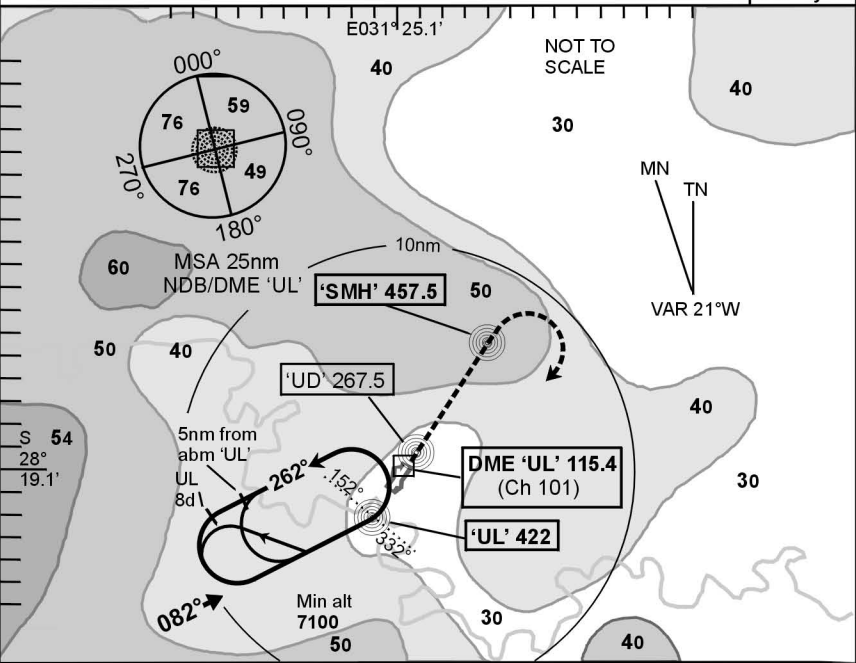
FAUL

ULUNDI

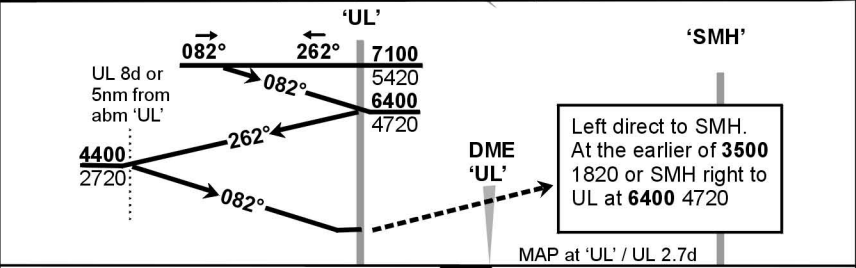
124.8 (Common traffic advisory)

NDB-01

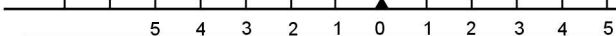
EFF
08 July 04



© AVDIRECT / 040204



THR Elev 1679/60hPa



T.Lev		ATC	'UL'
T.Alt		7100	
kt	fpm		
200	1240		
180	1110	THR	
160	990	0:38	
140	870	0:46	
120	740	0:54	
100	620	1:05	
80	490	1:21	

1. This procedure is conducted outside controlled airspace, entirely at the discretion of the pilot in command.
2. Initial approach altitude 7100 or higher MSA.
3. Descend in the hold to 6400.
4. Procedure turn approach applicable only within 30° of the outbound heading. Use phraseology 'Executing procedure turn approach'.
5. RoD from UL 8d computes at 3.5° angle of descent.
6. Circle to land at the discretion of the pilot in command.
7. RWY 20: Landing prohibited
RWY 02: Take-off prohibited.

Advisory Alt/Hgt	
UL DME	
8d	4400 2720
7d	4030 2350
6d	3660 1980
5d	3290 1610
4d	2920 1240

CAA South Africa

Rev: Topo clearance heights and MSA reviewed. Chart #.

WGS-84