

INSTRUMENT APPROACH CHART **AERODROME ELEV 151**
HEIGHTS RELATED TO THR RWY 19-ELEV 147

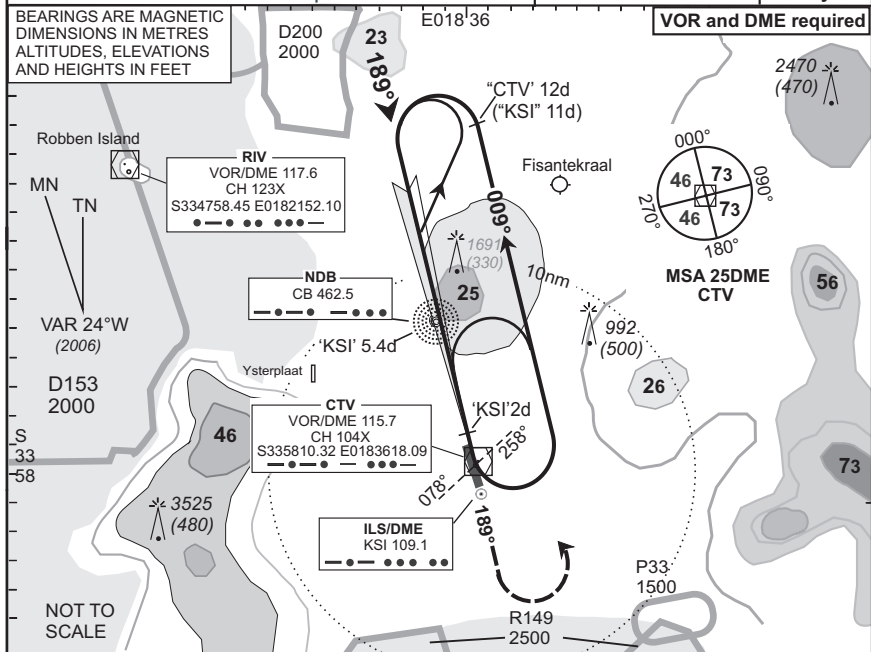
CAPE TOWN INTL

(Cat A - D)

ILS Z Rwy 19

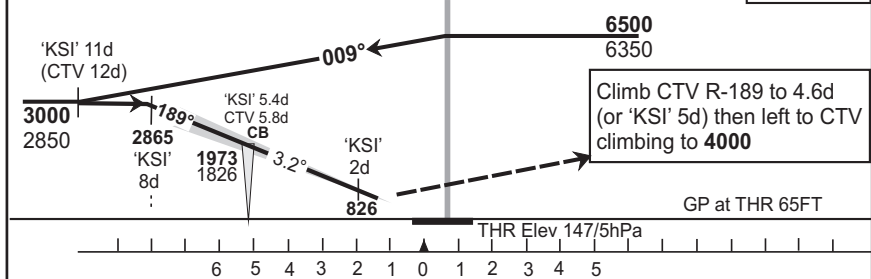
CAPE TOWN Approach 119.7	Tower 118.1	ATIS 127.0	ILS-02 EFF 10 May 07
------------------------------------	-----------------------	----------------------	-----------------------------------

FACT



© ANDIRECT / 271206

CTV	T.Lev ATC
	T.Alt 7500



- Initial approach altitude **6500** or higher MSA.
- Procedure turn approach applicable only within 30° of the outbound heading. Use phraseology "Request procedure turn approach".
- Caution:** High ground and obstructions along eastern boundary of final approach area.
- Circling approaches between 010°M & 160°M are not authorised for Cat C & D aircraft.
- Cat 11 operations and minima must be approved by CAA.
- Circle to land at the discretion of the pilot in command.

OCA/H					OM - THR							
Cat of ACFT	A	B	C	D	Speed	Kt	80	100	120	140	160	
Straight	Cat 1	283(136)	291(144)	301(154)	310(163)	Time	M:s	3:54	3:07	2:36	2:13	1:57
-in	Cat 11	195(48)	206(59)	219(72)	232(85)	Rate of Descent	Fpm	450	570	680	790	900
Approach	GP INOP					KSI GP/DME	8d	5.4d	2d			
						GP Altitude	2865(2718)	1973(1826)	826(679)			

Rev: New Format. WGS-84

CAA South Africa