

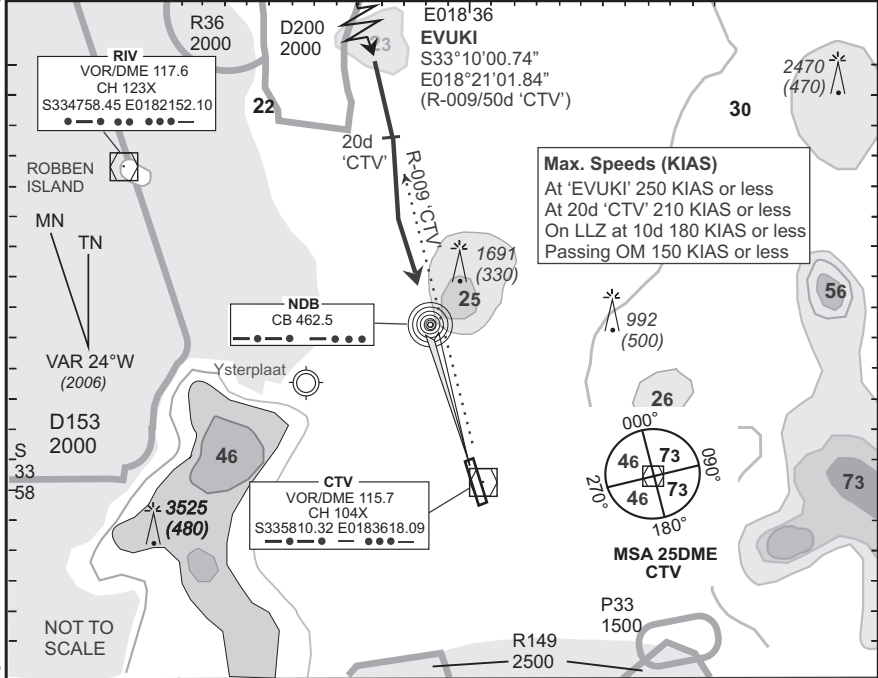
**STANDARD
ARRIVAL CHART
INSTRUMENT (STAR)**

**CAPE TOWN INTL
RWY 19
EVUKI 1B**

Elev 151	T.alt 7500 T.lev ATC	Approach 119.7	Tower 118.1	ATIS 127.0		ARR-09
BEARINGS ARE MAGNETIC DIMENSIONS IN METRES ALTITUDES, ELEVATIONS AND HEIGHTS IN FEET. DISTANCES IN NM.						EFF 10 May 07

FACT

1. SIDS and STARS must be announced in operation on ATIS
2. SIDS and STARS will only be in force when Surveillance Radar is in operation
3. If unable to comply with SID or STAR, notify ATC



© AVDIRECT / 050107

STAR	RWY	Routing (including Min Noise Routing)
EVUKI 1B	19	Leave EVUKI on R-009 'CTW' (inbound). Passing 20DME 'CTW' adjust onto the LLZ RWY 19.
Comm Fail (Squawk 7600)		<p>Before EVUKI. Proceed to EVUKI and continue on the EVUKI 1B STAR. Comply with the 'After EVUKI' Communication Failure procedure.</p> <p>After EVUKI. Continue on the routing for the EVUKI 1B STAR, maintain last assigned level or descend to 6500 FT ALT, whichever is the lowest. Crossing 20DME 'CTW' descend to 2700 FT ALT. and complete the straight-in ILS approach and land RWY 19.</p> <p>Communication Failure Procedure for STAR: In the event of a missed approach with the intention of diverting to an alternate aerodrome, proceed as follows: To the east: TETAN ONE BRAVO SID. To the south-east: OKTED ONE BRAVO SID. To the north and north-west: KODES ONE BRAVO SID.</p>

CAA South Africa