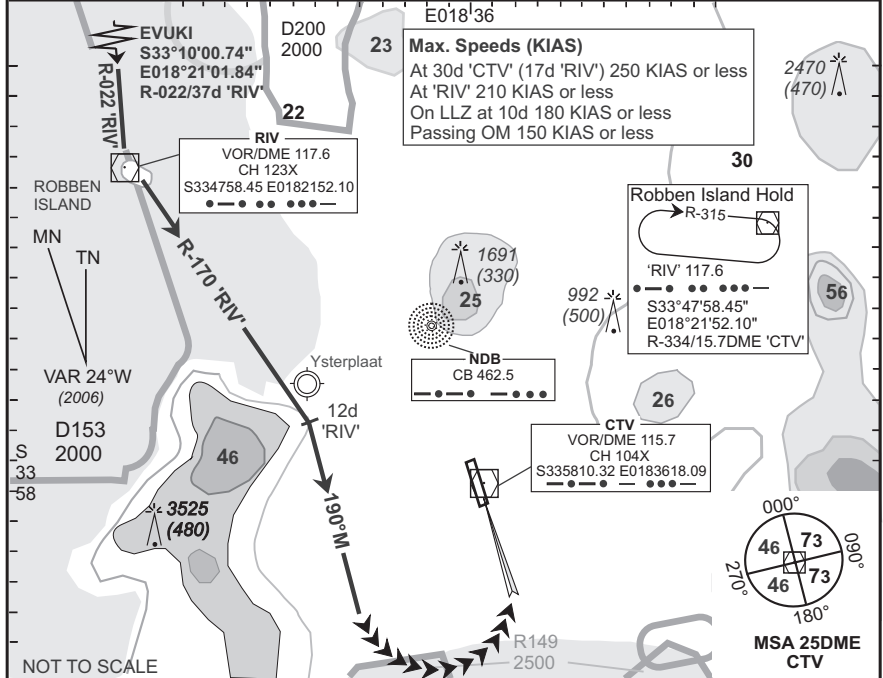


**STANDARD  
ARRIVAL CHART  
INSTRUMENT (STAR)**

**CAPE TOWN INTL  
RWY 01  
EVUKI 1A**

Elev 151	T.alt 7500 T.l.e.v ATC	Approach 119.7	Tower 118.1	ATIS 127.0	ARR-05
BEARINGS ARE MAGNETIC DIMENSIONS IN METRES ALTITUDES, ELEVATIONS AND HEIGHTS IN FEET. DISTANCES IN NM.					EFF 05 JUN 08
1. SIDS and STARS must be announced in operation on ATIS 2. SIDS and STARS will only be in force when Surveillance Radar is in operation 3. If unable to comply with SID or STAR, notify ATC					

FACT



STAR	RWY	Routing (including Min Noise Routing)
EVUKI 1A	01	From EVUKI route direct 'RIV'. Leave 'RIV' on R-170 'RIV'. Passing 12d 'RIV' (outbound) turn right to track 190°M for radar vectoring onto the ILS RWY 01.
Comm Fail (Squawk 7600)		<p><b>Before EVUKI.</b> Continue on the EVUKI 1A STAR. Proceed to 'RIV' and enter the 'RIV' hold. Hold at last assigned level for minimum 5 minutes, then climb/descend to FL100 in the hold. Leave 'RIV' at FL100 and continue on the <b>after 'RIV'</b> Communication Failure procedure.</p> <p><b>After 'RIV'.</b> Continue on the routing for the ROBBEN ISLAND 4C STAR and maintain last assigned level. Crossing R-225 'CTV' on track 190°M turn left direct 'CTV', then descend to 6500 FT ALT. On reaching 'CTV' complete the VOR/DME/ILS approach and land RWY 01.</p> <p><b>Communication Failure Procedure for STAR:</b>                      In the event of a missed approach with the intention of diverting to an alternate aerodrome, proceed as follows:                      To the east: follow routing for the TETAN ONE CHARLIE SID.                      To the south-east: follow the routing for the OKTED ONE ALFA SID.                      To the north: follow the routing for the KODES ONE ALFA SID.</p> <p><b>Note 1:</b> Due to terrain do not cross East of R180 'CTV'.</p>

CAA South Africa