

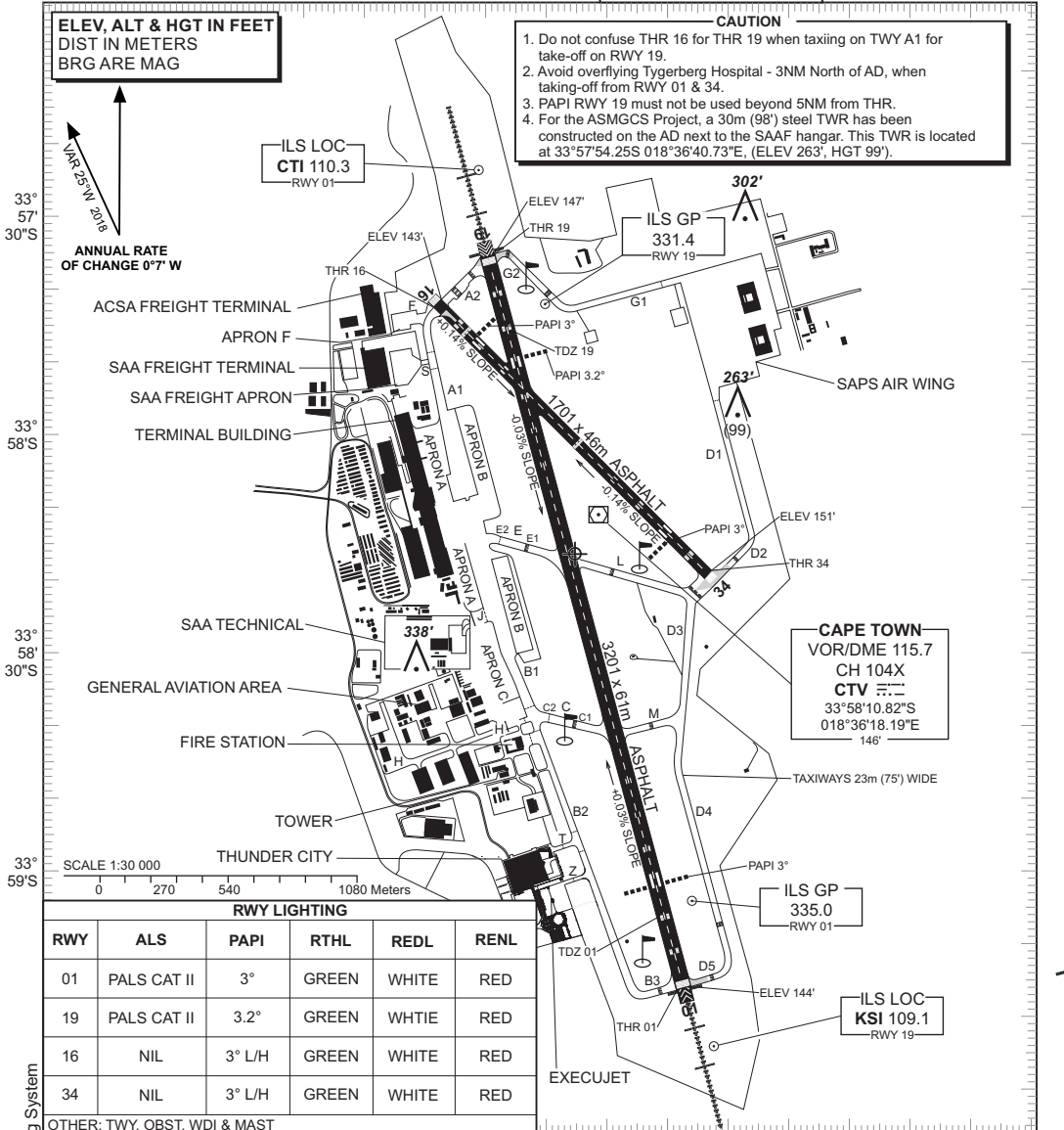
**AERODROME/
HELIPORT
CHART - ICAO**

33°58'16.93"S
018°36'15.45"E

ELEV 151'
GUND 102.3'

CAPE TOWN ATIS 127.00
APN 122.65
SMC 121.90
TWR 118.10

**CAPE TOWN INTL
FACT**



RWY LIGHTING

RWY	ALS	PAPI	RTHL	REDL	RENL
01	PALS CAT II	3°	GREEN	WHITE	RED
19	PALS CAT II	3.2°	GREEN	WHITE	RED
16	NIL	3° L/H	GREEN	WHITE	RED
34	NIL	3° L/H	GREEN	WHITE	RED

OTHER: TWY, OBST, WDI & MAST

PHYSICAL CHARACTERISTICS

RWY	DIRECTION	THR COORDINATES	THR ELEVATION	TORA (m)	TODA (m)	ASDA (m)	LDA (m)	SWY (m)	CWY (m)	SLOPE	SURFACE	BEARING STRENGTH	CIRCUIT
01	345°(T)	33°59'15.864"S 018°36'32.013"E	144'	3201	4172	3201	3201	NIL	971	0.0003U	ASPH	PCN 66/F/A/X/T	L/H
19	165°(T)	33°57'35.429"S 018°36'00.181"E	147'	3201	3544	3201	3201	NIL	343	0.0003D		L/H	
16	135°(T)	33°57'40.957"S 018°35'50.890"E	143'	1701	1701	1701	1701	NIL	NIL	0.0014U	ASPH	PCN 32/F/A/X/U	UNK
34	315°(T)	33°58'20.144"S 018°36'37.564"E	151'	1701	1701	1701	1701	NIL	NIL	0.0014D		UNK	

CHANGE: RWY 01/19 Lighting System

EFF: 20 JUN 19