

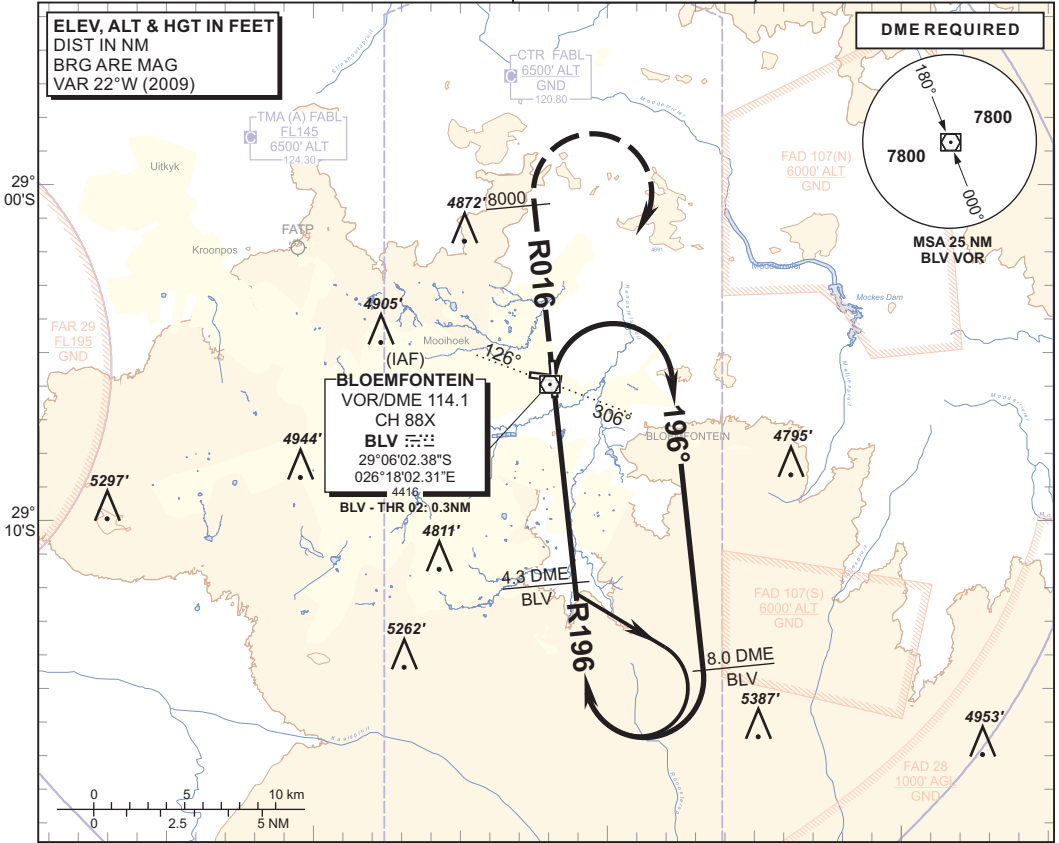
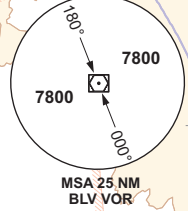
**INSTRUMENT AERODROME ELEV 4457'**  
**APPROACH CHART**  
**HEIGHTS RELATED TO THR RWY 02 - ELEV 4413'**

ATIS 126.45  
 TWR 120.80  
 APP 124.30

**BLOEMFONTEIN**  
 (BRAM FISCHER INTL)  
**VOR RWY 02**  
 CAT A - D

**ELEV, ALT & HGT IN FEET**  
 DIST IN NM  
 BRG ARE MAG  
 VAR 22°W (2009)

**DMR REQUIRED**



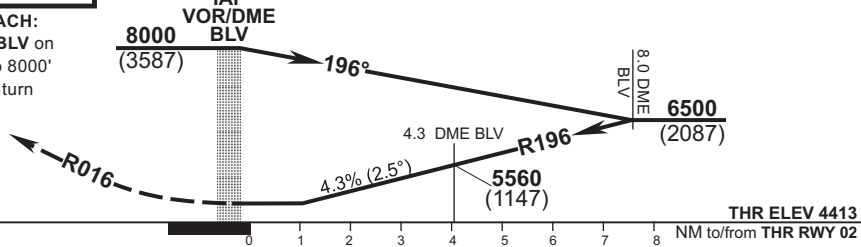
<b>DIST to RWY 02</b>	6	5	4	3		
<b>ALT (HGT)</b>	5980 (1567)	5710 (1297)	5450 (1037)	5190 (777)		

**TRANSITION ALT 8000**  
**TRANSITION LEVEL ATC**

**INA ALT: 8000**

**MISSED APPROACH:**

Track away from BLV on R016 and climb to 8000' ALT. At 8000' ALT turn right and return to BLV.



CHANGE: BLV Coordinates

					<b>GS</b>	KT	80	100	120	140	160	
<b>OCA (H)</b>					8.0 DME BLV - THR	M:S	5:47	4:38	3:52	3:19	2:54	
<b>Straight-in Approach</b>					<b>VOR/DME</b>	<b>Rate of descent</b>	<b>FPM</b>	352	440	528	616	703
<b>Circling</b>					<b>NOTE:</b> 1. Procedure turn approach applicable only within 30° of the outbound heading. Use phraseology "Request procedure turn approach".							