

**STANDARD ARRIVAL  
CHART -  
INSTRUMENT  
(STAR)**

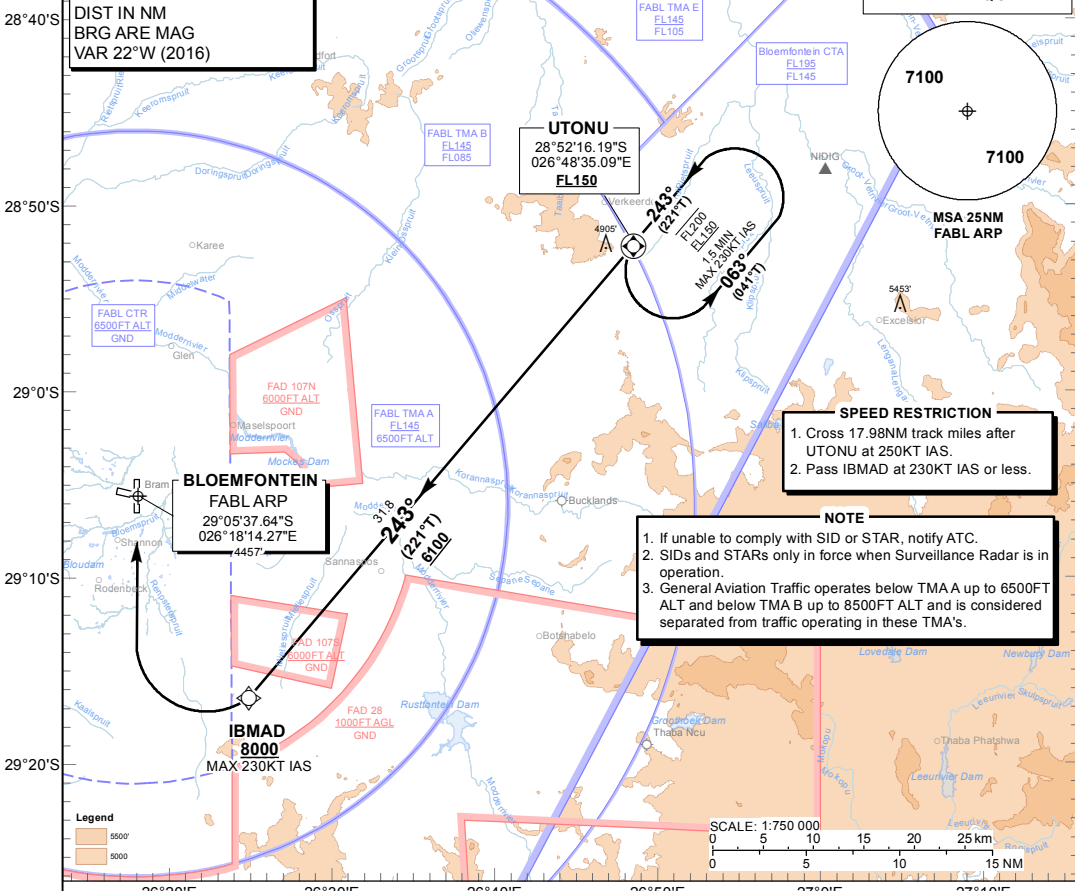
TRANSITIONAL ALTITUDE  
**8000'**  
TRANSITIONAL LEVEL  
**ATC**

APP: 124.30  
APP E: 124.30  
APP W: 119.40  
TWR: 120.80  
ATIS: 126.45

**BLOEMFONTEIN  
(BRAM FISCHER INTL)  
RNAV (GNSS) RWY 02  
UTONU 1A**

**ELEV, ALT & HGT IN FEET**  
DIST IN NM  
BRG ARE MAG  
VAR 22°W (2016)

**RNAV 1 REQUIRED**



**UTONU 1A:  
RWY 02**

Leave UTONU for IBMAD, reaching IBMAD at 8000FT ALT. At IBMAD continue on the RNAV (GNSS) APCH RWY 02 and land.  
Request RADR vectors if required.

**COMMUNICATION FAILURE PROCEDURE (Squawk 7600)**

**Before UTONU:** Proceed to UTONU and enter the UTONU RNAV (GNSS) hold at FL150.  
Hold for minimum 5 MIN. Leave UTONU on the "After UTONU" Communication Failure Procedure.

**After UTONU:** Continue on the UTONU 1A RNAV (GNSS) STAR to IBMAD. At IBMAD continue on the RNAV (GNSS) APCH RWY 02 and land.

CHANGE: New Procedure